

Face Access Control

1. Introduction

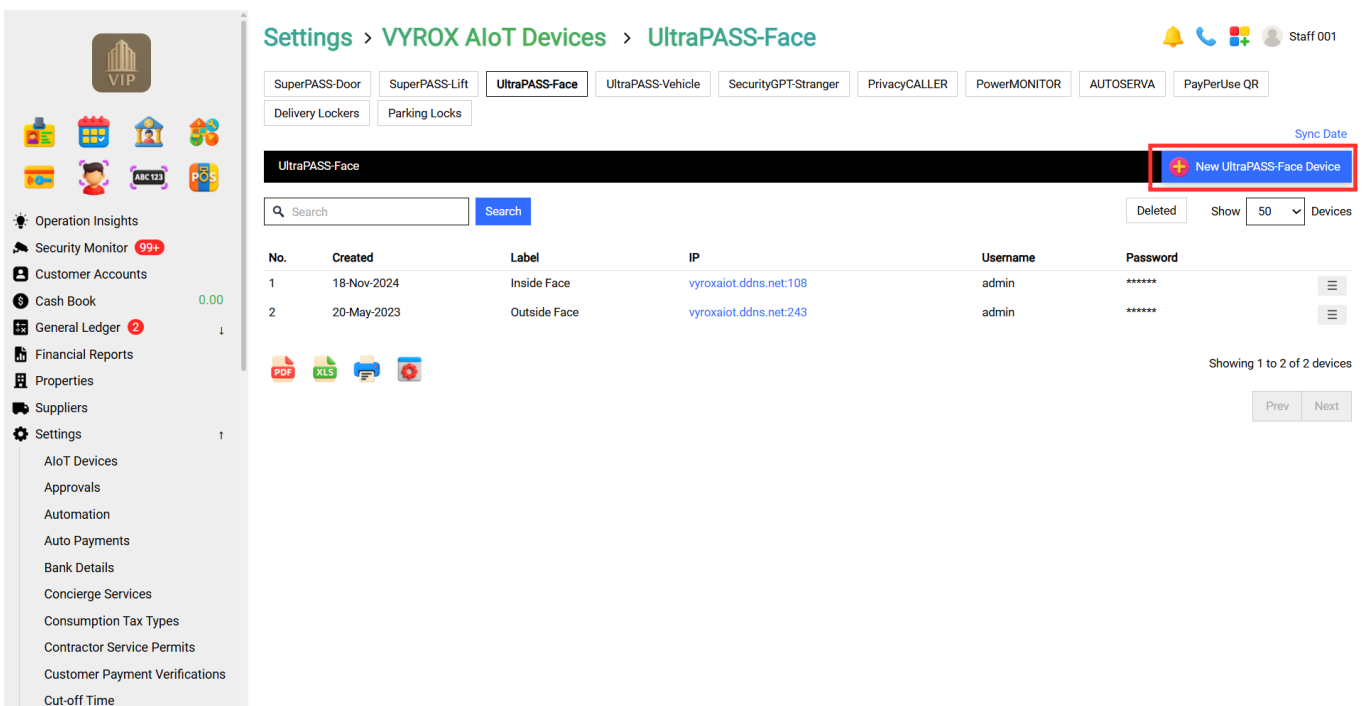
A thorough procedure for using the Face Access Control system is described in this tutorial. Find out how to create a fresh face profile for every unit. Find out how to fix registration issues and activate and deactivate face access. Examine the security measures used to safeguard biometric information. The management of Face Access Control is explained in this lesson. To provide each unit with easy and safe access, create a new face profile.

2. Set Up Face Access Control

This tutorial offers a thorough process for using the VYROX VIP Smart AIoT Devices, created by VYROX INTERNATIONAL SDN BHD, to optimise and improve building and facility operations. Property managers, building administrators, and facility operators may easily connect and operate the Face Access Control system with the help of VYROX's VIP AIoT tools, a full suite of intelligent solutions. These AIoT devices provide for improved security, more operational efficiency, and more intelligent decision-making by integrating hardware and software into a single, cohesive platform.

2.1 UltraPass Face

Go to **Setting > AIoT Devices > SuperPASS-Face**

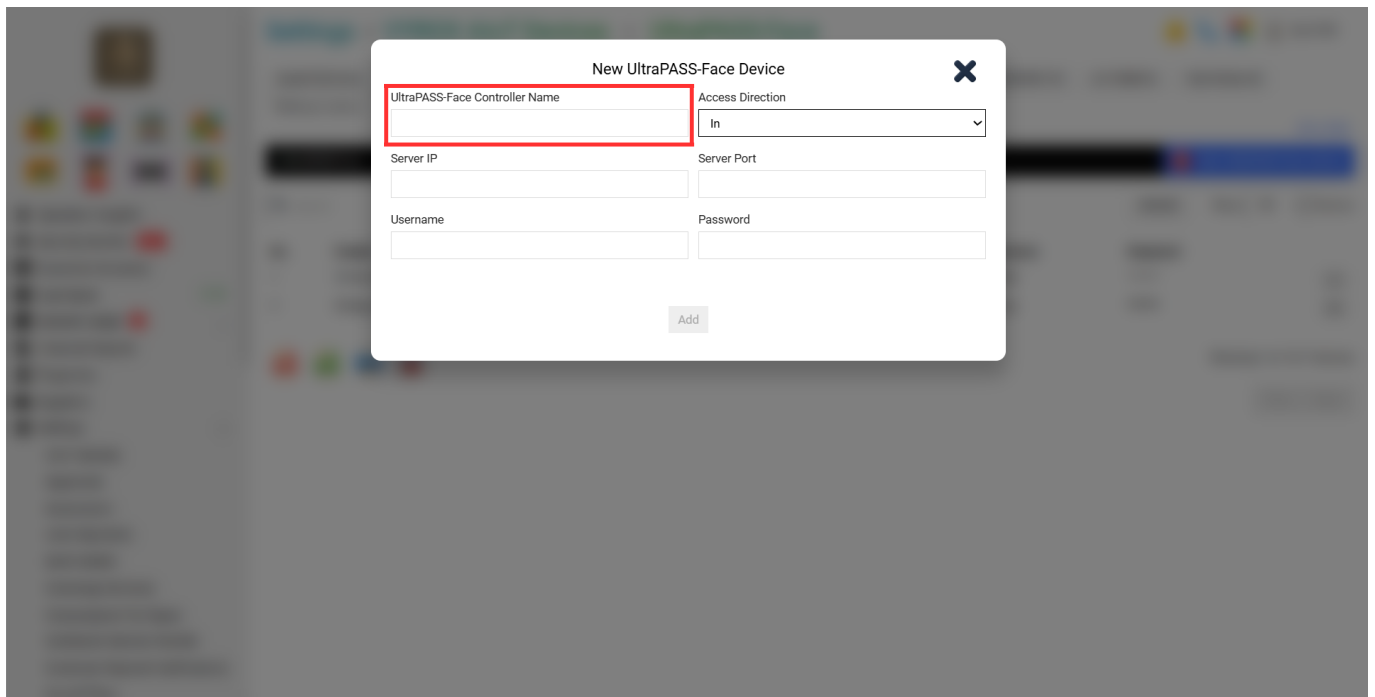


Details include:

1. SuperPass-Face Controller Name
2. Access Direction
3. Server IP
4. Server Port
5. Username & Password

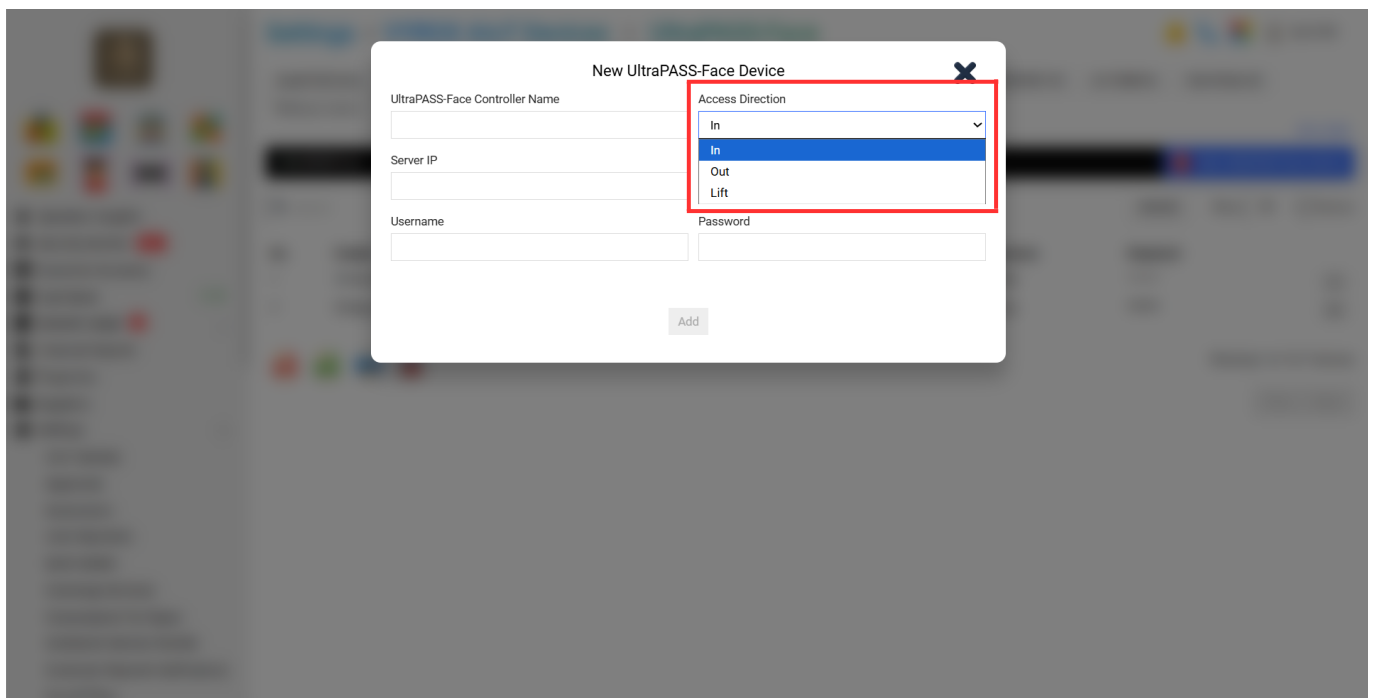
Step 1:

Fill in blank **“SuperPass-Face Controller Name”**



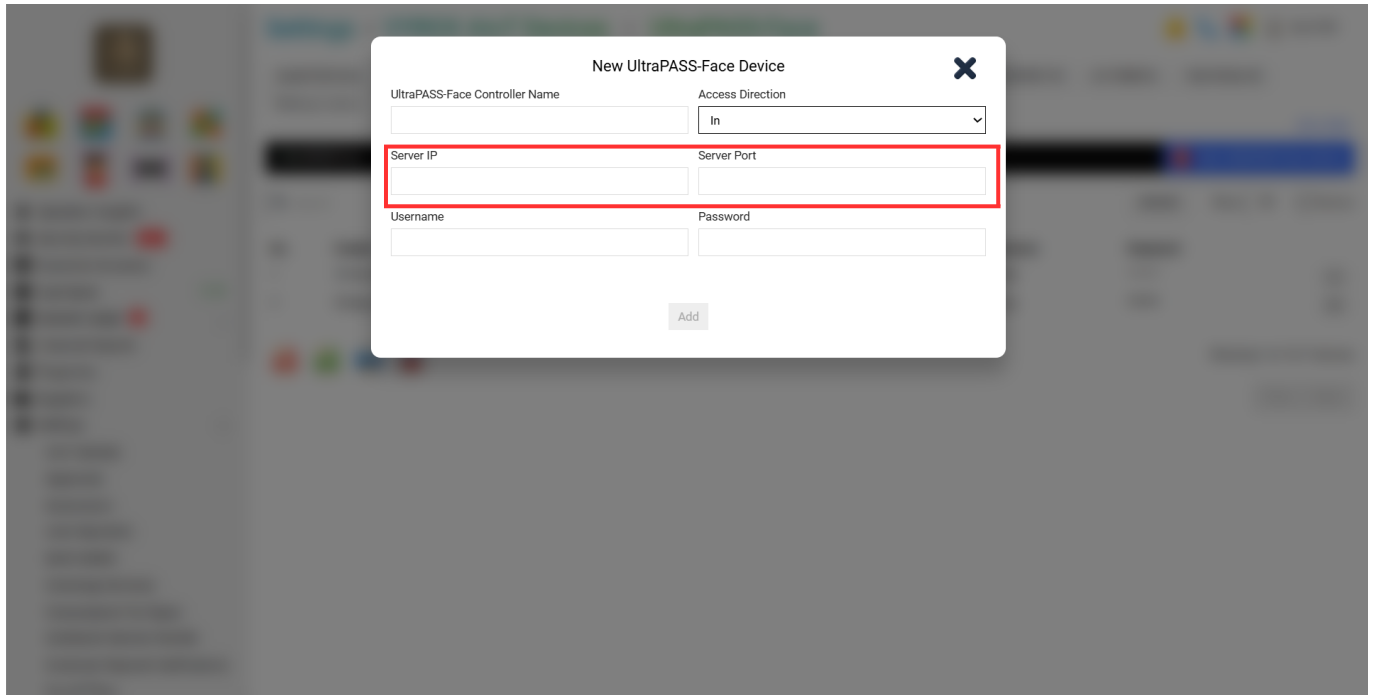
Step 2:

Select **“Access Direction”**

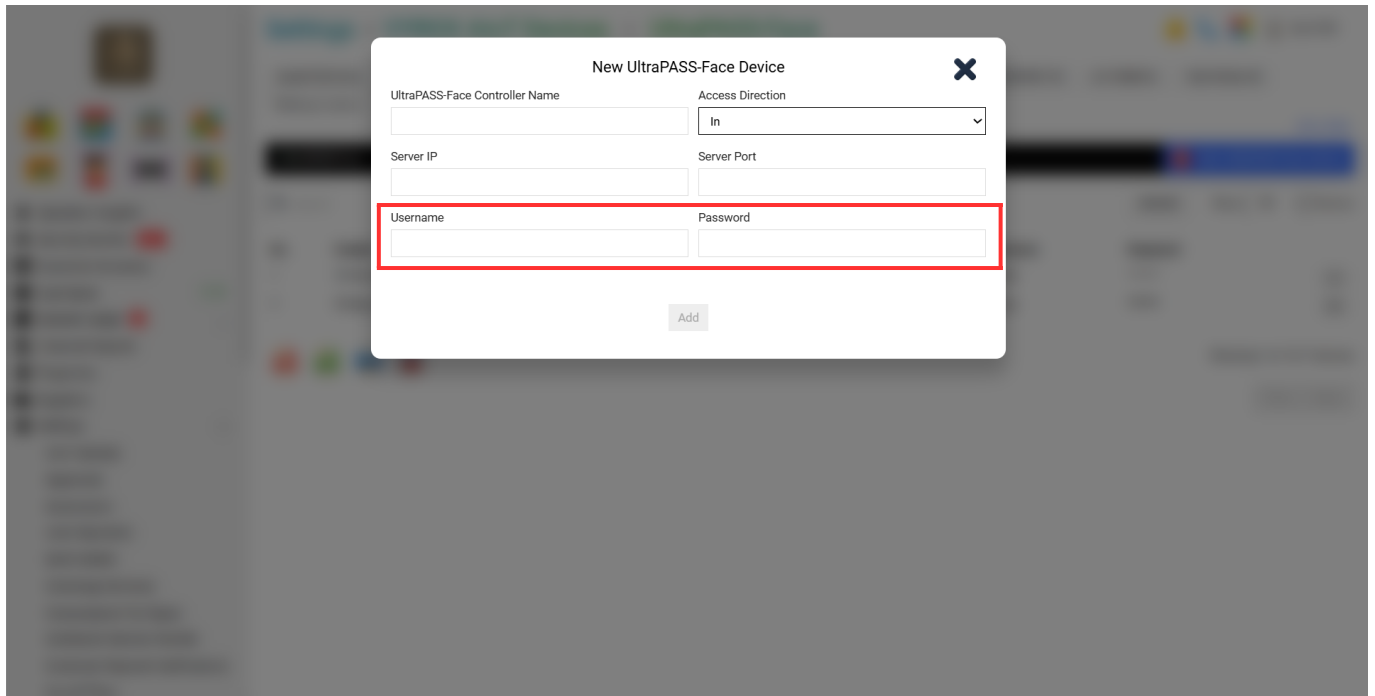


Step 3:

Fill in the Blank **“Server IP & Server Port”**



Step 4: Fill in the blank **“Username & Password”**.



After done keying in all information, Click **“Add”**

2.2 SuperPass-Door

Go to **Setting > AIoT Devices > SuperPASS-Door**

Settings > VYROX AIoT Devices > SuperPASS-Door

Navigation: SuperPASS-Door, SuperPASS-Lift, UltraPASS-Face, UltraPASS-Vehicle, SecurityGPT-Stranger, PrivacyCALLER, PowerMONITOR, AUTOSERVA, PayPerUse QR

Sub-navigation: Delivery Lockers, Parking Locks

Sync Date

SuperPASS-Door

Search: [Search] [Search] Deleted Show 50 Devices

No.	Created	Serial No.	Label
1	07-May-2025	253257130	Access Door Demo
2	14-Aug-2025	253228206	Testing Board

Showing 1 to 2 of 2 devices

Buttons: PDF, XLS, Print, Refresh, Prev, Next

Left Menu: VIP, Operation Insights, Security Monitor (99+), Customer Accounts, Cash Book (0.00), General Ledger (2), Financial Reports, Properties, Suppliers, Settings (1)

Settings List: Approvals, Automation, Auto Payments, Bank Details, Concierge Services, Consumption Tax Types, Contractor Service Permits, Customer Payment Verifications, Cut-off Time

Details include:

1. SuperPass-Door Controller Name
2. Number of Doors Supported
3. Label Name in Channel
4. Cloud Server
5. Cloud Server API Key
6. SuperPASS-Door Controller Serial Number

Step 1:

Fill in the blank. **“SuperPass-Door Controller Name”**

New SuperPASS-Door Device

SuperPASS-Door Controller Name: [Red Boxed Input Field]

Number of Doors Supported: 1

Channel 1 (Relay 1)

Label Name (In): [Input Field] Label Name (Out): [Input Field]

This is an entrance, exit or perimeter access point for the premise, thus update the visitor status to "Checked-In" or "Checked-Out" respectively upon successful grant of access

Enable "Anti-Passback" (access will not be granted if a visitor attempts to enter an area again without first leaving the area)

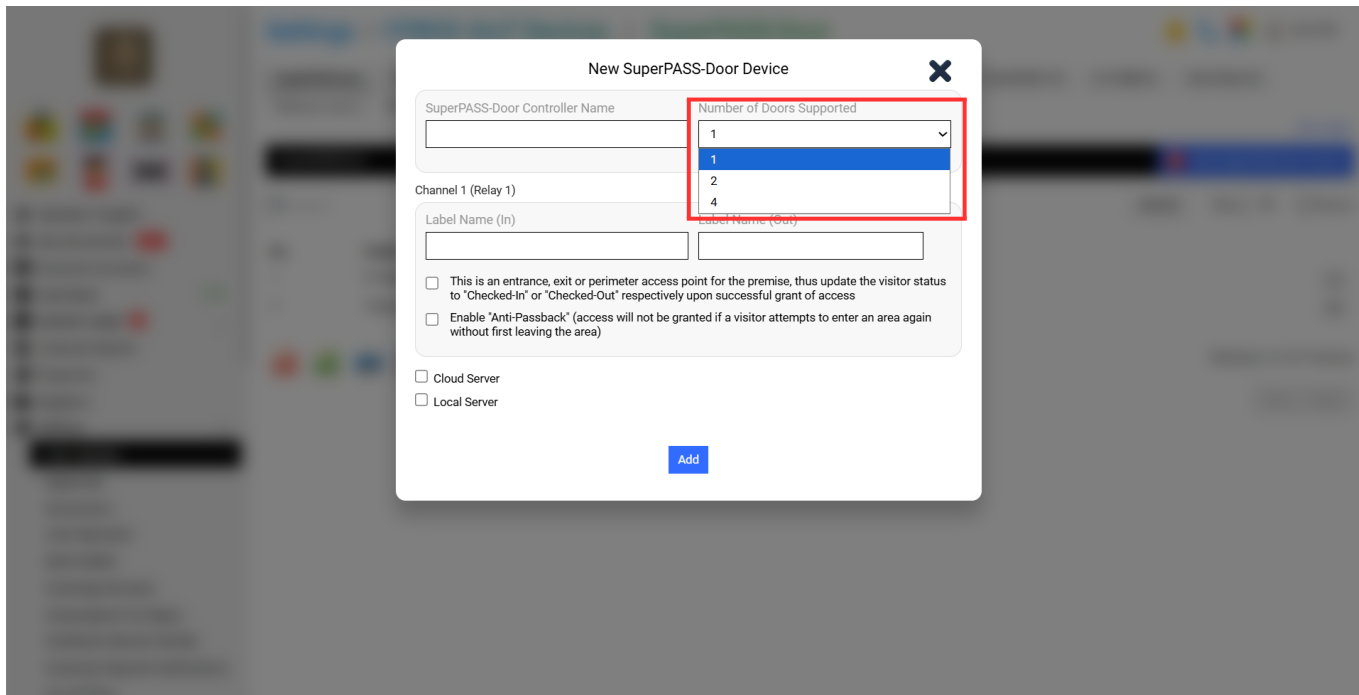
Cloud Server

Local Server

Add

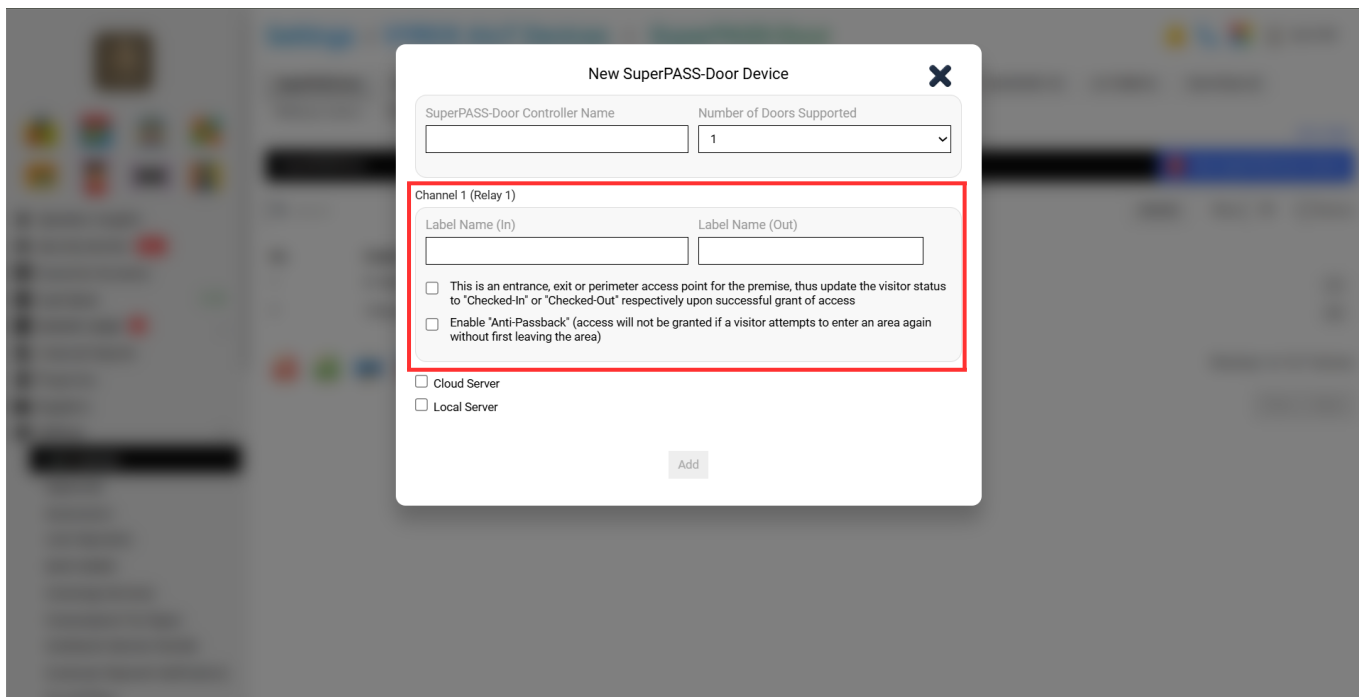
Step 2:

Select **“Number of Doors Supported”**

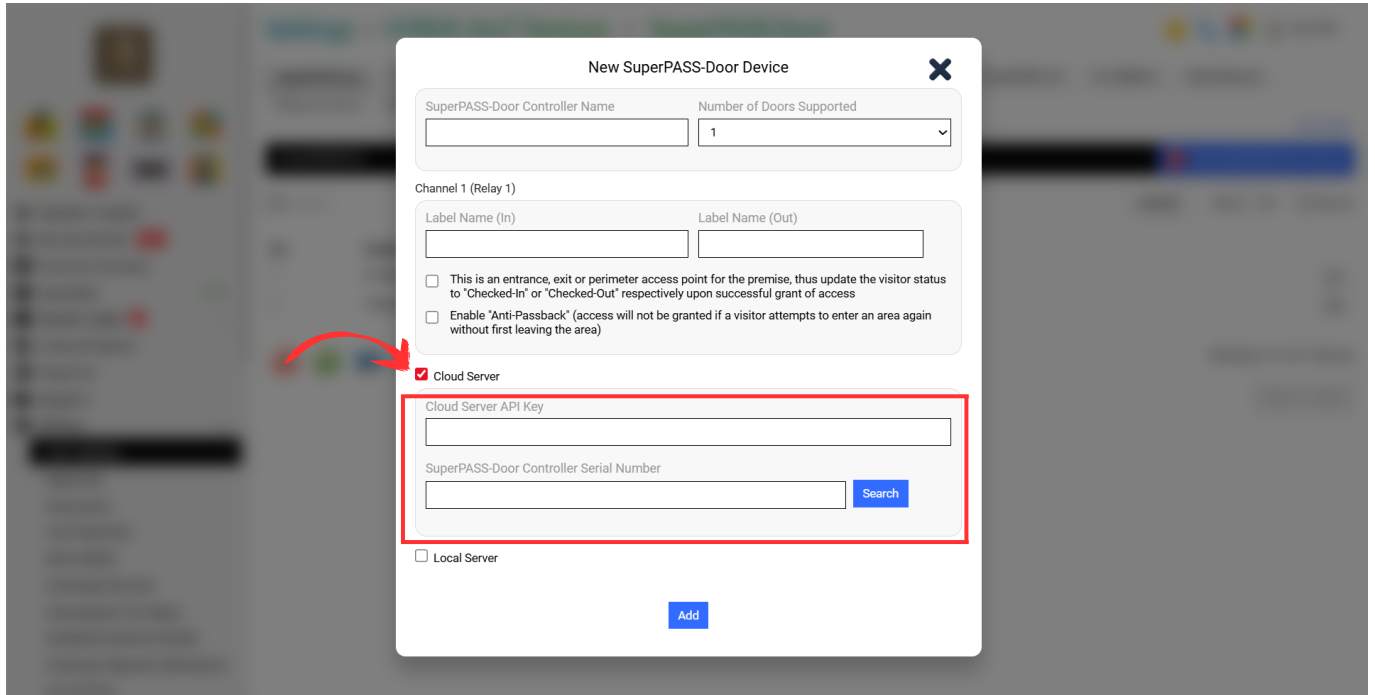


Step 3:

Fill in the Blank **“Label Name in Channel”**



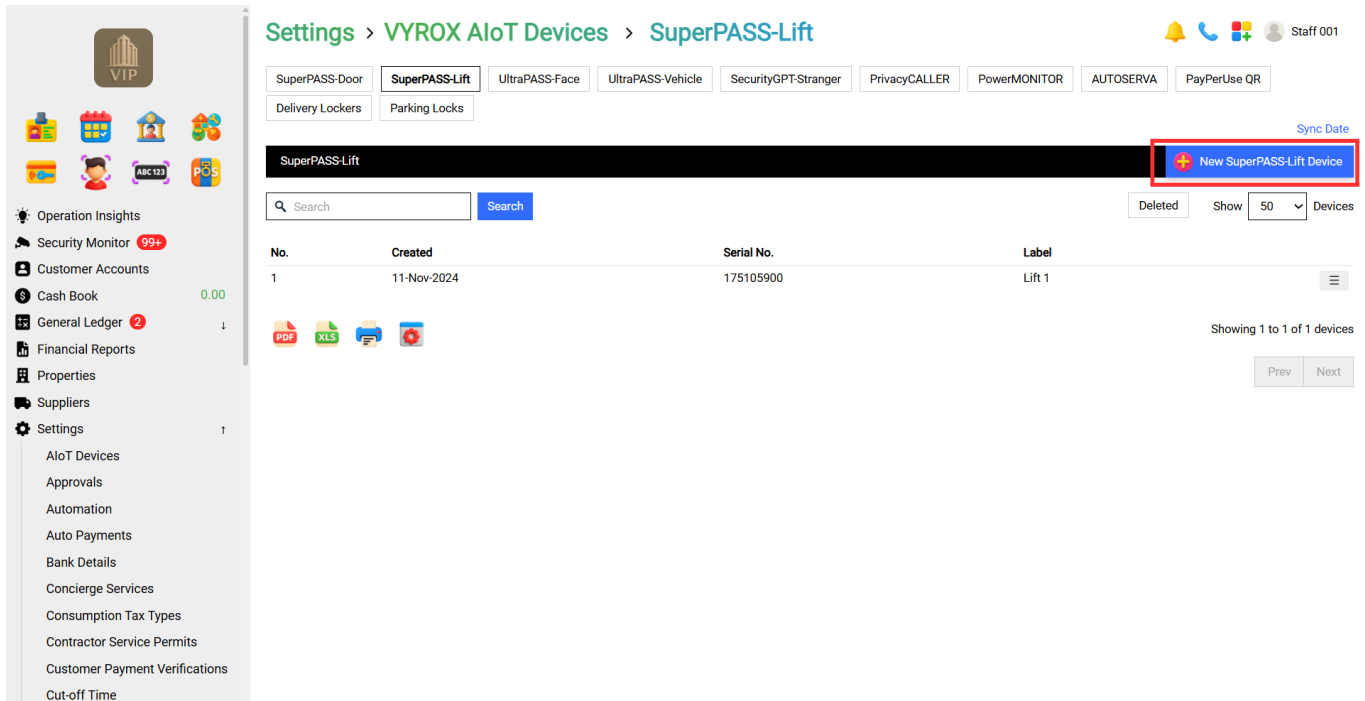
Step 4: Tick Cloud Server and Fill in the blank **“Cloud Server API Key & SuperPASS-Door Controller Serial Number”**.



After done keying in all information, Click "Add"

2.3 SuperPass-Lift

Go to **Setting > AIoT Devices > SuperPASS-Lift**



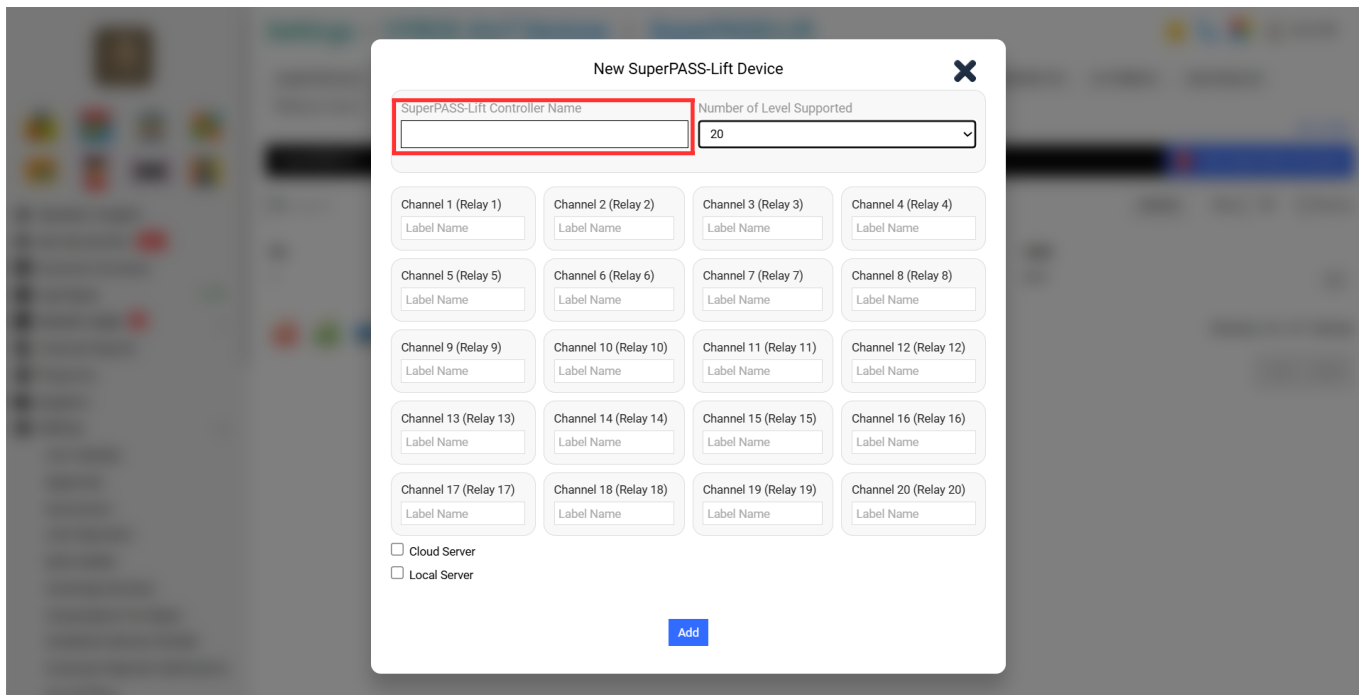
Details include:

- 1. SuperPass-Lift Controller Name
- 2. Number of Level Supported
- 3. Label Name in Channel
- 4. Cloud Server

- 5. Cloud Server API Key
- 6. SuperPASS-Lift Controller Serial Number

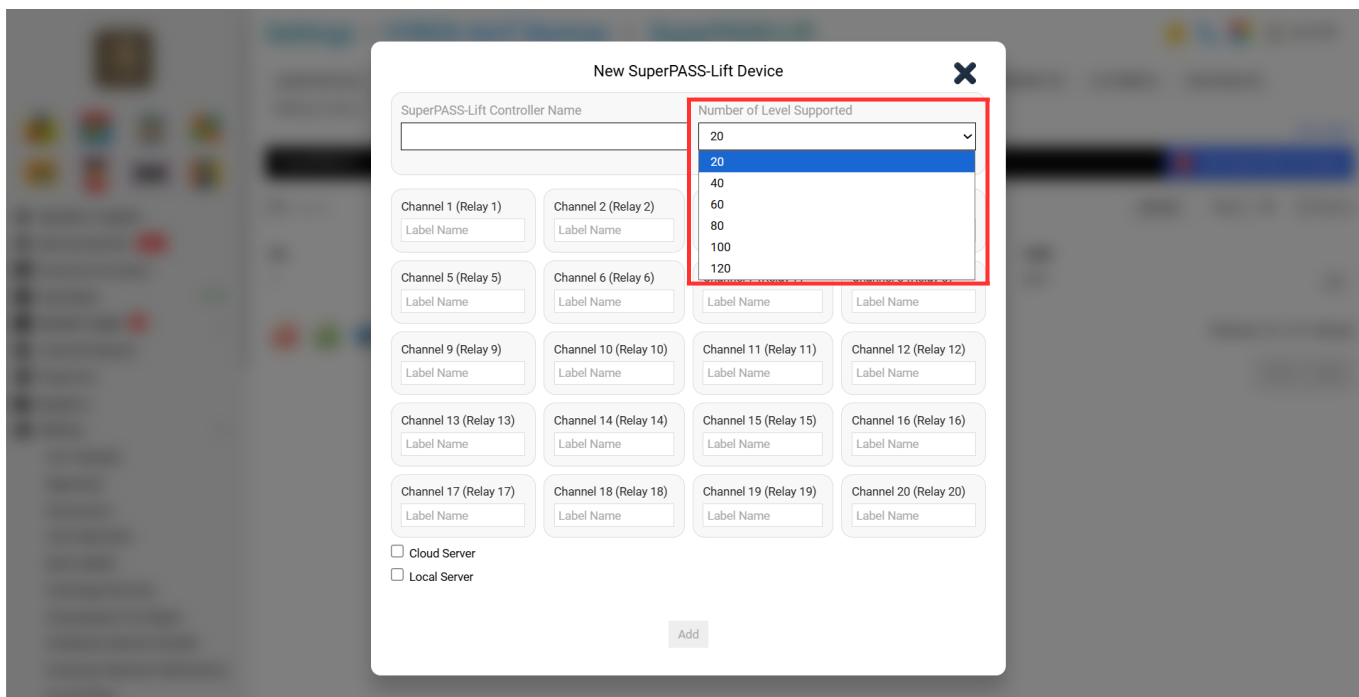
Step 1:

Fill in blank **“SuperPass-Lift Controller Name”**



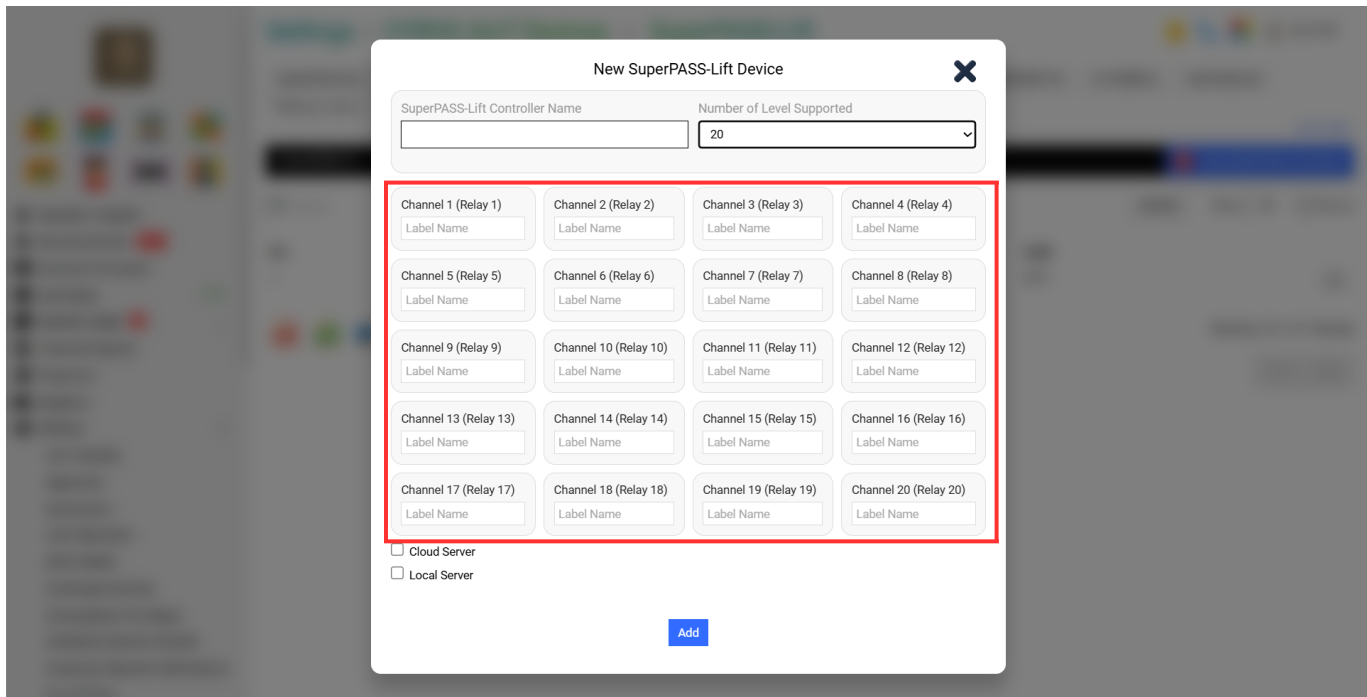
Step 2:

Select **“Number of Level Supported”**

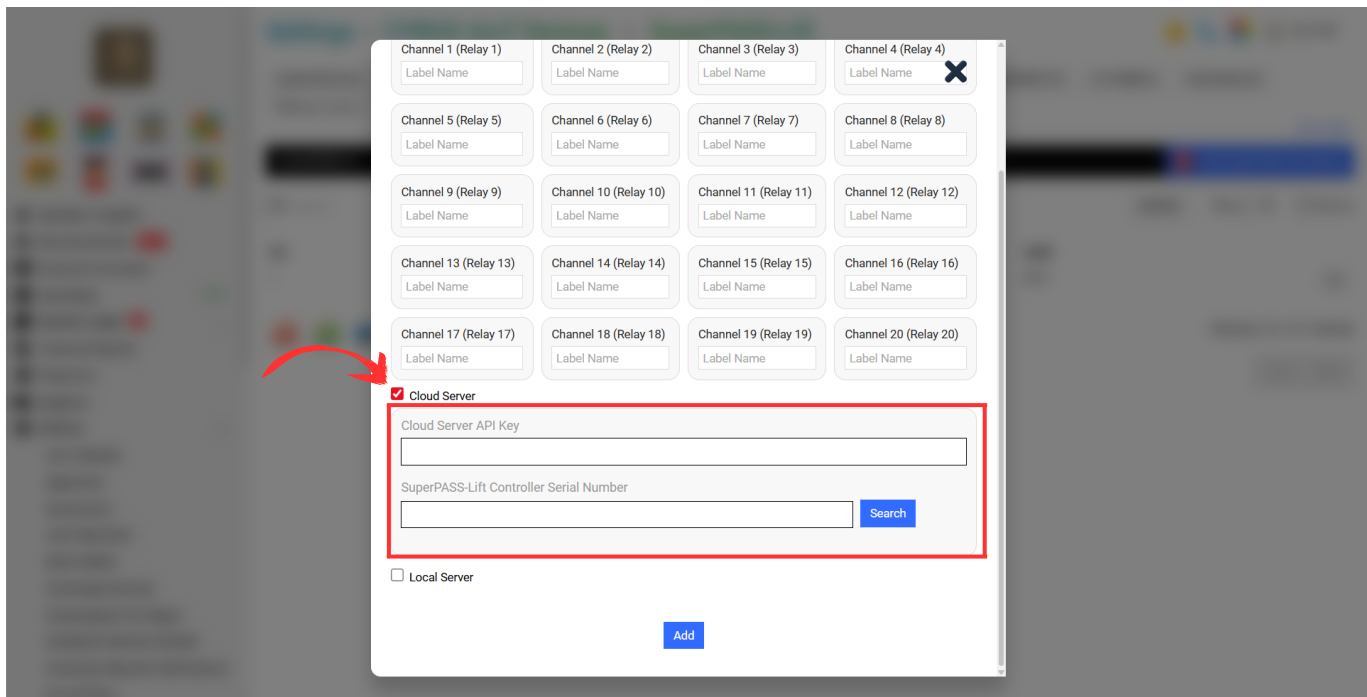


Step 3:

Fill in the Blank “Label Name in Channel”



Step 4: Tick Cloud Server and Fill in the blank “Cloud Server API Key & SuperPASS-Door Controller Serial Number”.



After done keying in all information, Click “Add”

3. Configuration Instructions for Properties

This guide shows you step-by-step how to set up the Properties Unit part of VYROX VIP Smart

Integrated Property Management System, which was created by VYROX INTERNATIONAL SDN BHD. Property managers, building officials, and facility workers can make and handle each unit, making sure that the information about each unit is always correct. Then, the UltraPass Face module for face recognition can be connected to each unit without any problems. This lets unit records be directly tied to safe and automated entry rights.

2.1 Configuration Properties

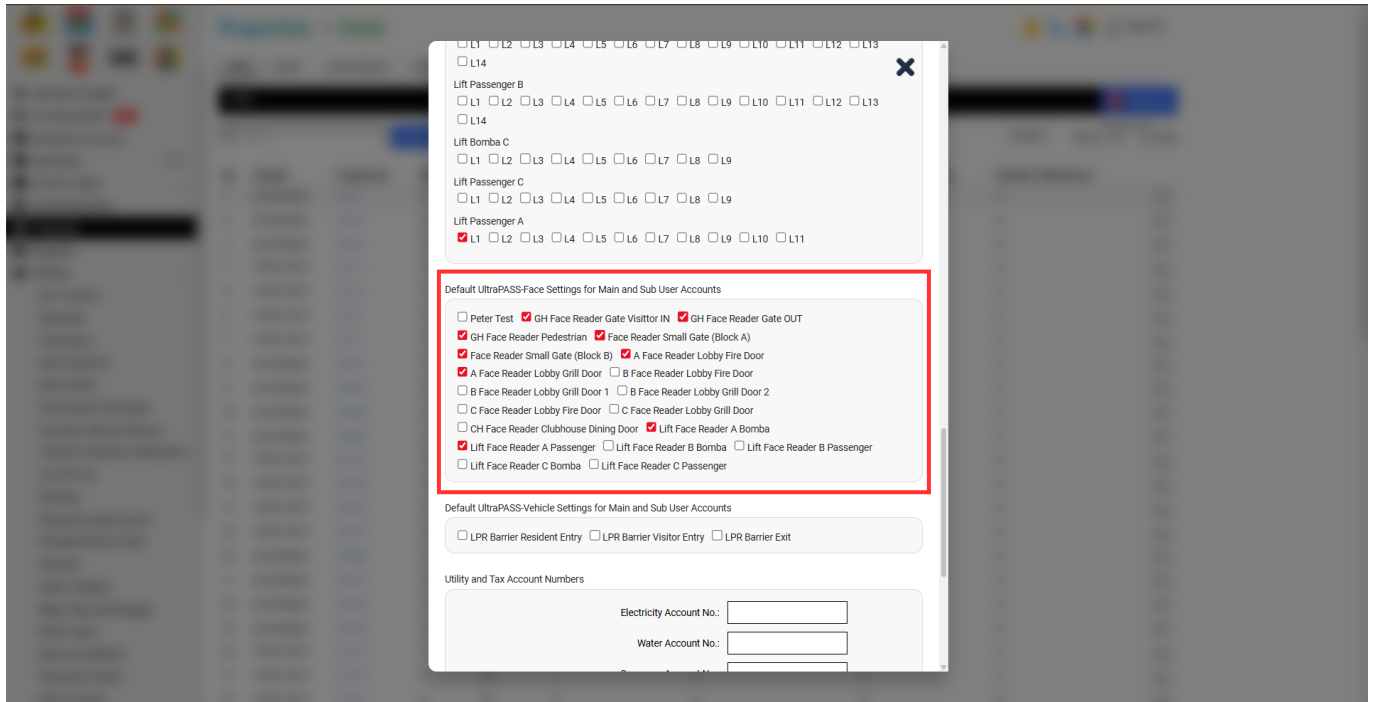
Go to **Properties > Units > Three Lines in the box.**

The screenshot shows the 'Properties > Units' configuration page in the PROSERVA system. The left sidebar contains various navigation options, with 'Properties' selected. The main content area shows a table of units with the following columns: No., Created, Property No., Size (ft²), Share Unit, Reserved Parking Lots, Non-Reserved Parking Lots, Number of Bedrooms, and Number of Bathrooms. A red box highlights the three-line menu icon for the first unit (A-1-1), and a red arrow points to it.

No.	Created	Property No.	Size (ft ²)	Share Unit	Reserved Parking Lots	Non-Reserved Parking Lots	Number of Bedrooms	Number of Bathrooms
1	25-Feb-2025	A-1-1	0	91	2	0	0	0
2	25-Feb-2025	A-1-2	0	105	2	0	0	0
3	25-Feb-2025	A-1-3	0	67	1	0	0	0
4	25-Feb-2025	A-1-4	0	89	1	0	0	0
5	25-Feb-2025	A-1-5	0	67	1	0	0	0
6	25-Feb-2025	A-1-6	0	89	1	0	0	0
7	25-Feb-2025	A-1-7	0	91	2	0	0	0
8	25-Feb-2025	A-1-8	0	105	2	0	0	0
9	25-Feb-2025	A-10-1	0	97	2	0	0	0
10	25-Feb-2025	A-10-2	0	111	2	0	0	0
11	25-Feb-2025	A-10-3	0	67	1	0	0	0
12	25-Feb-2025	A-10-4	0	89	1	0	0	0
13	25-Feb-2025	A-10-5	0	67	1	0	0	0
14	25-Feb-2025	A-10-6	0	89	1	0	0	0
15	25-Feb-2025	A-10-7	0	97	2	0	0	0
16	25-Feb-2025	A-10-8	0	111	2	0	0	0
17	25-Feb-2025	A-11-1	0	97	2	0	0	0
18	25-Feb-2025	A-11-2	0	111	2	0	0	0
19	25-Feb-2025	A-11-3	0	67	1	0	0	0

Step 1

Tick, "Default UltraPASS-Face Settings for Main and Sub User Accounts"



Note: Please tick which one the unit uses for door access.

From:

<https://www.vyrox.com/wiki/> - **VYROX Wiki**

Permanent link:

https://www.vyrox.com/wiki/doku.php?id=face_access_control&rev=1756108521

Last update: **2025/08/25 07:55**

