

AIOT DEVICES

Introduction

Access control systems are security solutions designed to regulate and monitor entry to physical or digital spaces, ensuring that only authorised individuals gain access. Access control systems improve safety, make operations easier, and safeguard important assets by using technologies like key cards, fingerprints, QR codes, and password authentication. Residential buildings, commercial properties, and industrial facilities widely use these systems to effectively manage the movement of people and vehicles. Beyond security, access control systems also provide administrators with valuable data to monitor activities, improve efficiency, and enforce policies, making them an essential component of modern property and organisational management.

1. Set Up AIoT Devices

This tutorial offers a thorough process for using the VYROX VIP Smart AIoT Devices, created by VYROX INTERNATIONAL SDN BHD, to optimise and improve building and facility operations. Property managers, building administrators, and facility operators may easily connect and operate several systems, including SuperPass-Door, SuperPass-Lift, UltraPass Face, and UltraPass Vehicle, with the help of VYROX's VIP AIoT tools, a full suite of intelligent solutions. These AIoT devices provide for improved security, more operational efficiency, and more intelligent decision-making by integrating hardware and software into a single, cohesive platform.

1.1 SuperPass-Door

Go to **Setting > AIoT Devices > SuperPASS-Door**

Settings > VYROX AIoT Devices > SuperPASS-Door

Navigation: SuperPASS-Door, SuperPASS-Lift, UltraPASS-Face, UltraPASS-Vehicle, SecurityGPT-Stranger, PrivacyCALLER, PowerMONITOR, AUTOSERVA, PayPerUse QR, Delivery Lockers, Parking Lockers

Sync Date

SuperPASS-Door **New SuperPASS-Door Device**

Search: [Search] [Search] Deleted Show 50 Devices

No.	Created	Serial No.	Label
1	07-May-2025	253257130	Access Door Demo
2	14-Aug-2025	253228206	Testing Board

Showing 1 to 2 of 2 devices

Prev Next

Left sidebar menu: VIP, Operation Insights, Security Monitor 99+, Customer Accounts, Cash Book 0.00, General Ledger 2, Financial Reports, Properties, Suppliers, Settings 1, AIoT Devices (Approvals, Automation, Auto Payments, Bank Details, Concierge Services, Consumption Tax Types, Contractor Service Permits, Customer Payment Verifications, Cut-off Time)

Details include:

1. SuperPass-Door Controller Name
2. Number of Doors Supported
3. Label Name in Channel
4. Cloud Server
5. Cloud Server API Key
6. SuperPASS-Door Controller Serial Number

Step 1:

Fill in the blank. **“SuperPass-Door Controller Name”**

New SuperPASS-Door Device

SuperPASS-Door Controller Name [Red Box] Number of Doors Supported 1

Channel 1 (Relay 1)

Label Name (In) [] Label Name (Out) []

This is an entrance, exit or perimeter access point for the premise, thus update the visitor status to "Checked-In" or "Checked-Out" respectively upon successful grant of access

Enable "Anti-Passback" (access will not be granted if a visitor attempts to enter an area again without first leaving the area)

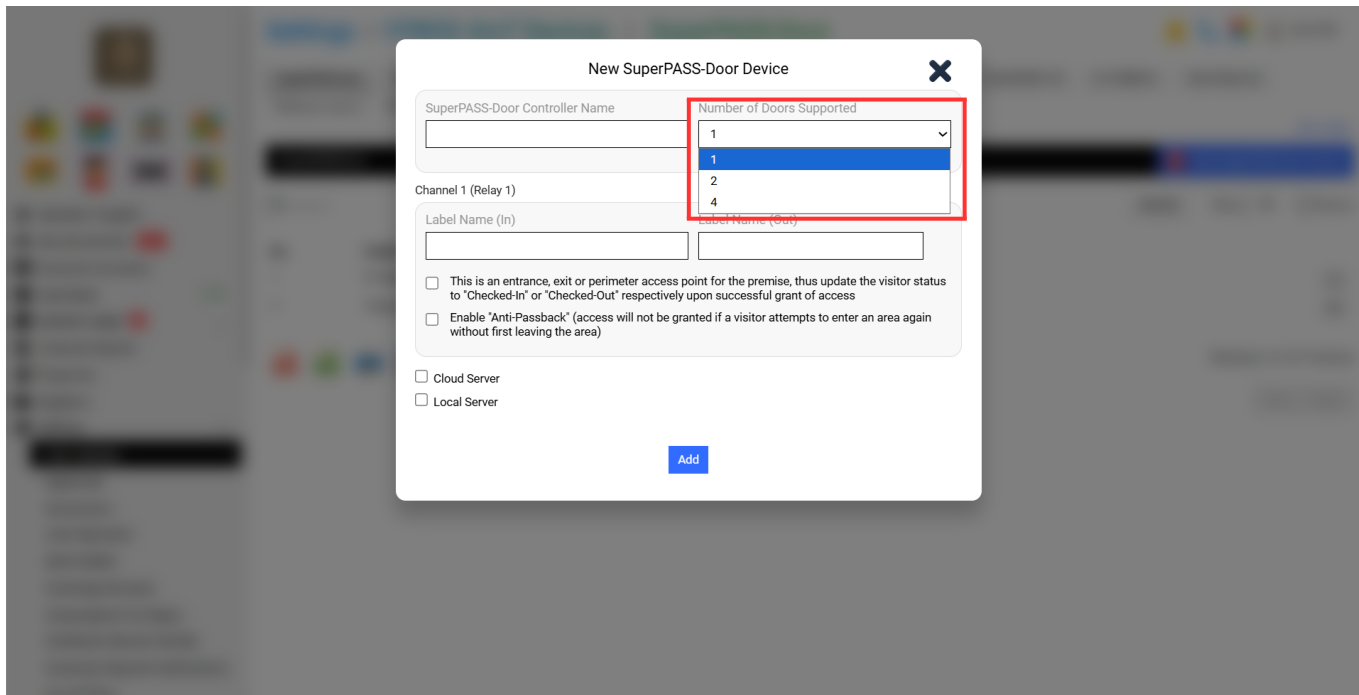
Cloud Server

Local Server

Add

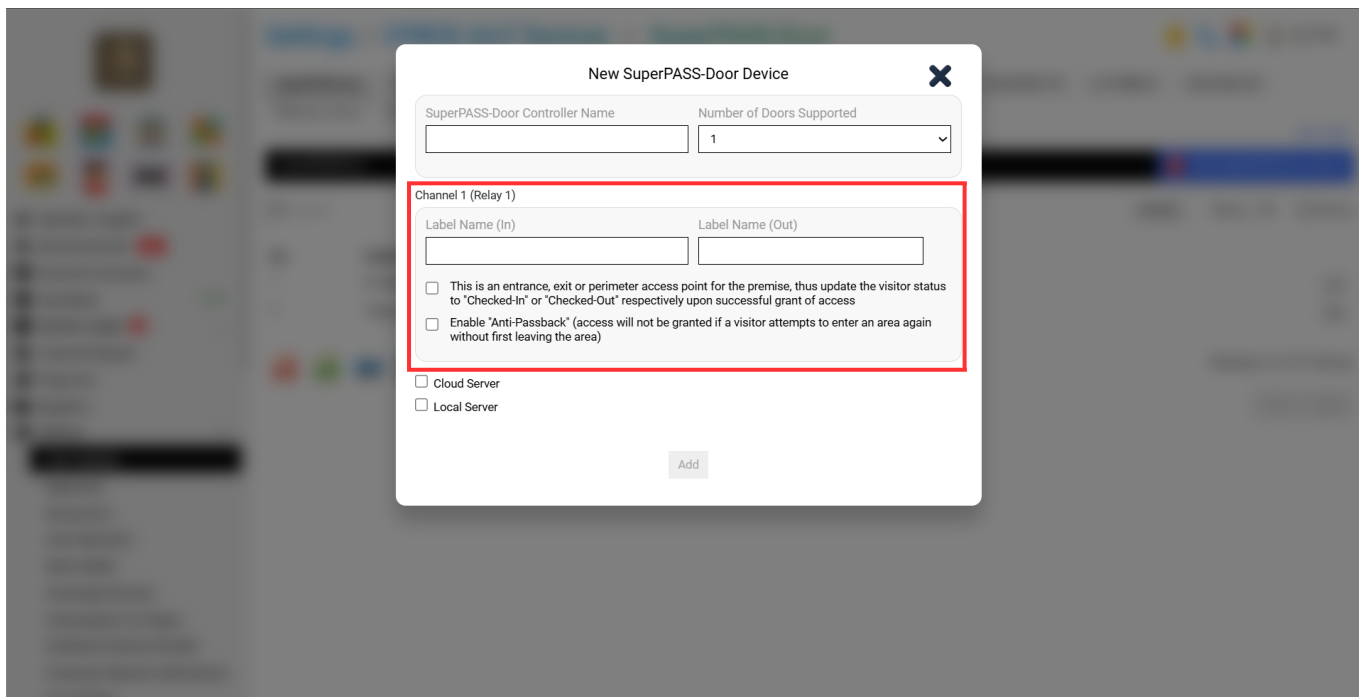
Step 2:

Select **“Number of Doors Supported”**

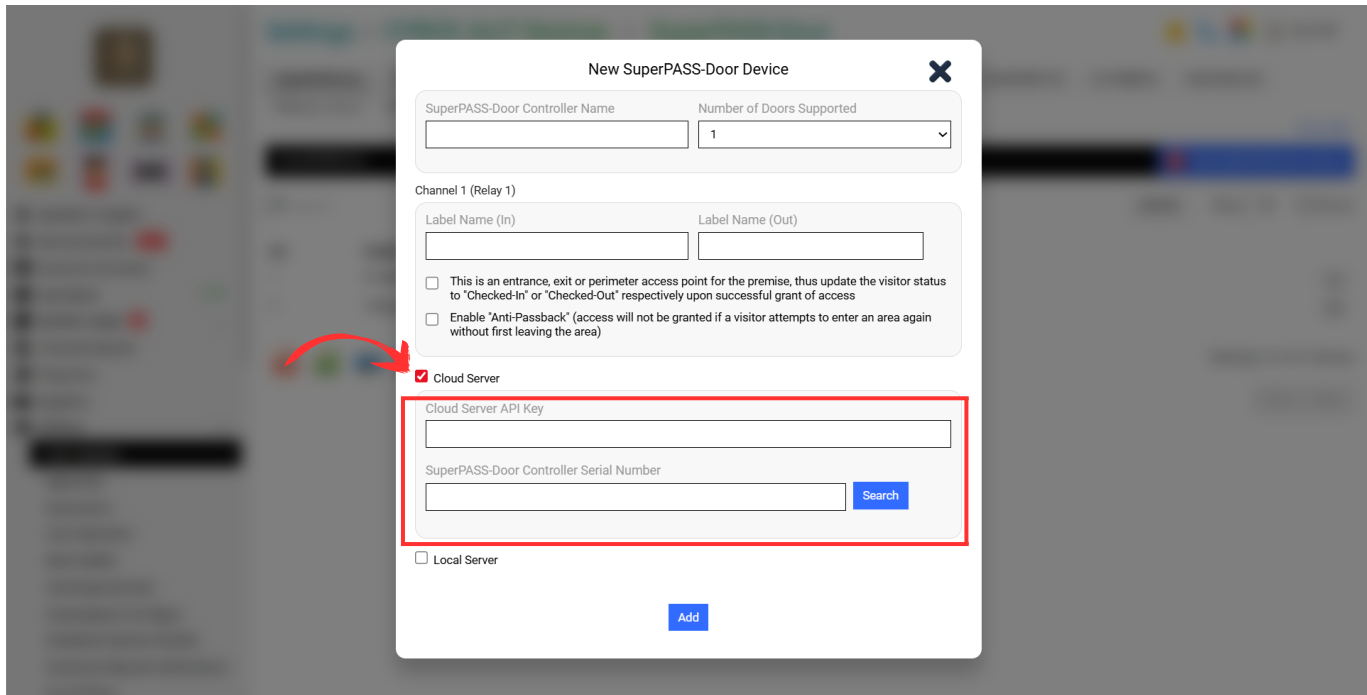


Step 3:

Fill in the Blank **“Label Name in Channel”**



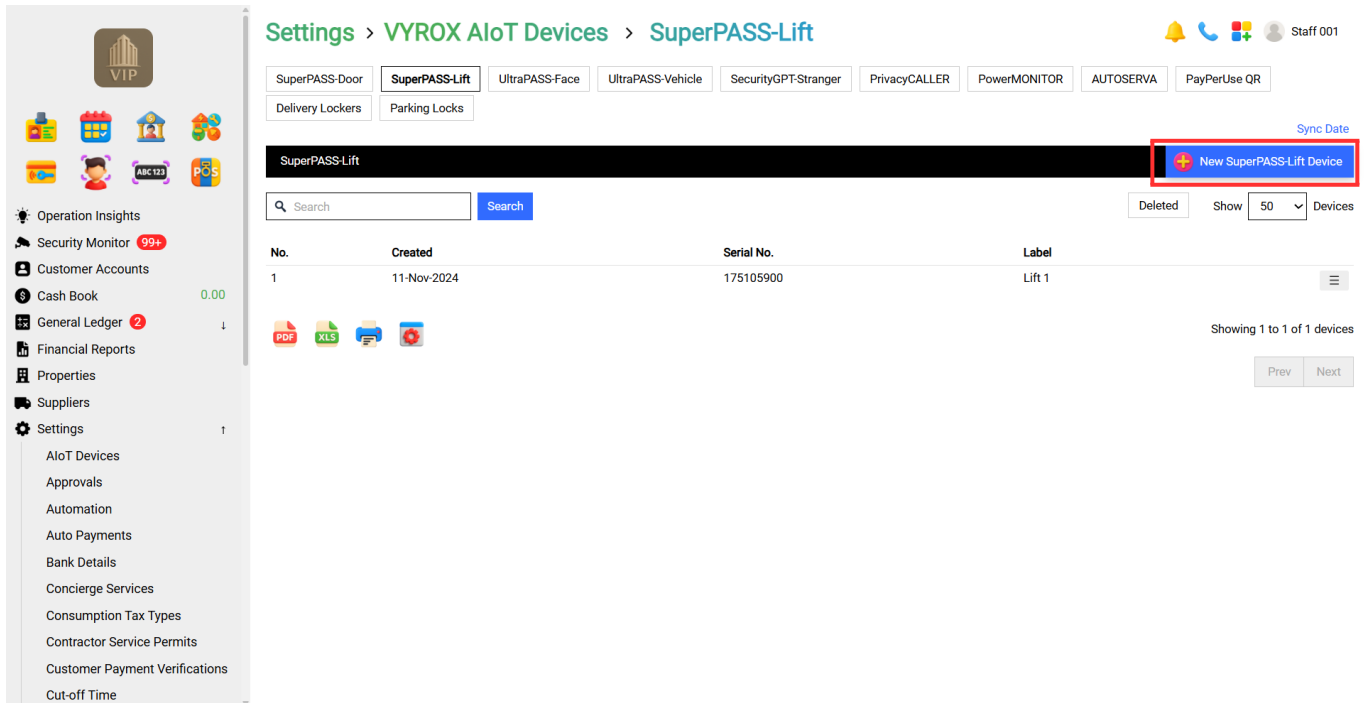
Step 4: Tick Cloud Server and Fill in the blank **“Cloud Server API Key & SuperPASS-Door Controller Serial Number”**.



After done keying in all information, Click "Add"

1.2 SuperPass-Lift

Go to **Setting > AIoT Devices > SuperPASS-Lift**



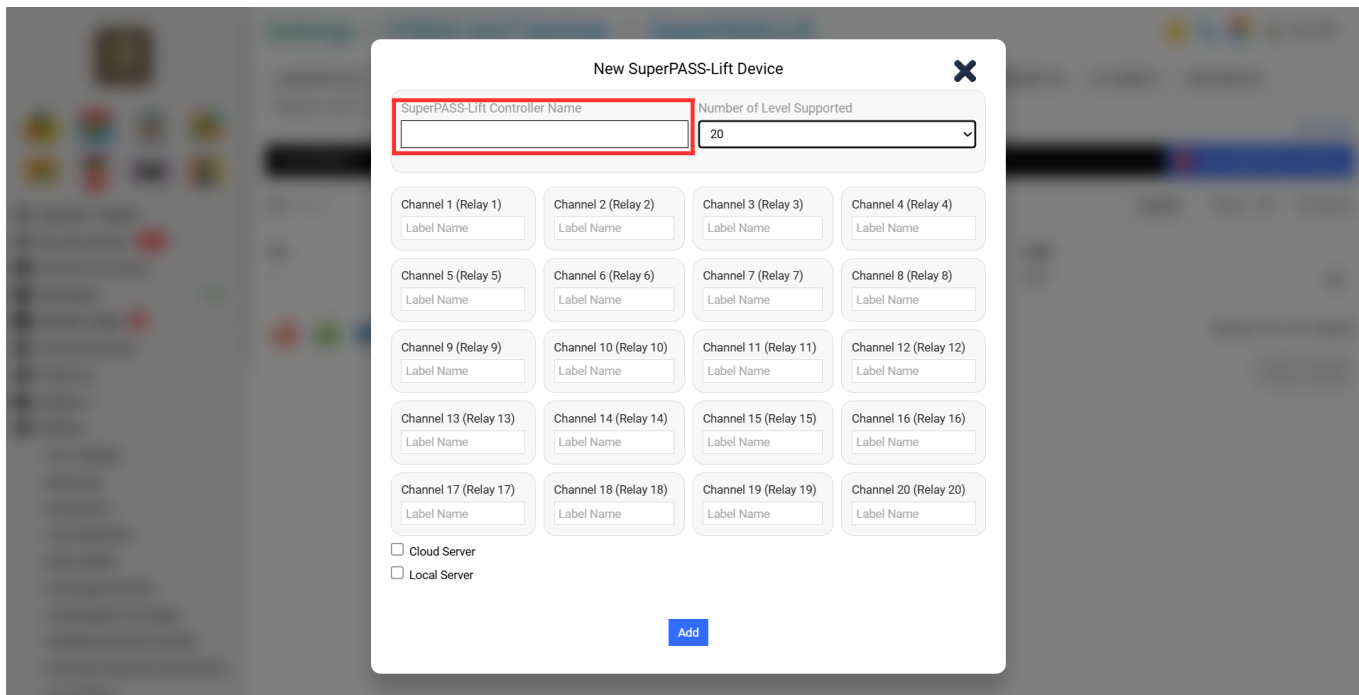
Details include:

1. SuperPass-Lift Controller Name
2. Number of Level Supported
3. Label Name in Channel
4. Cloud Server

- 5. Cloud Server API Key
- 6. SuperPASS-Lift Controller Serial Number

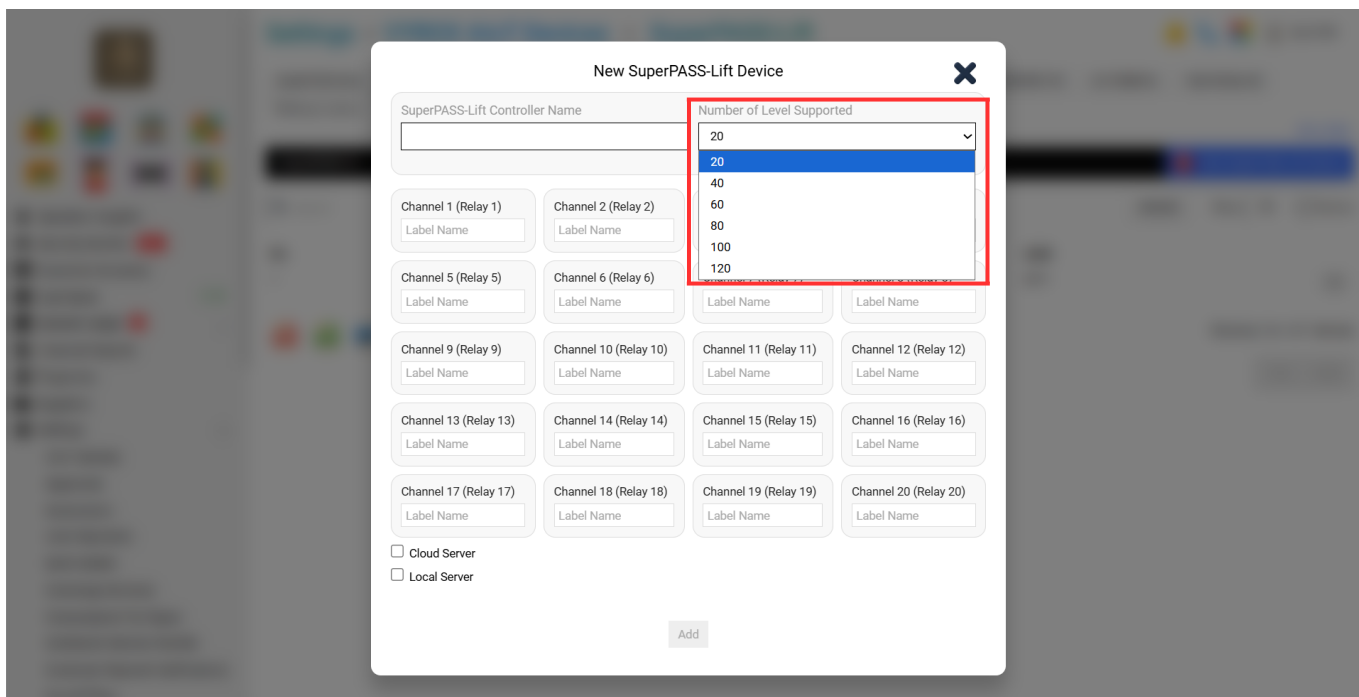
Step 1:

Fill in blank **“SuperPass-Lift Controller Name”**



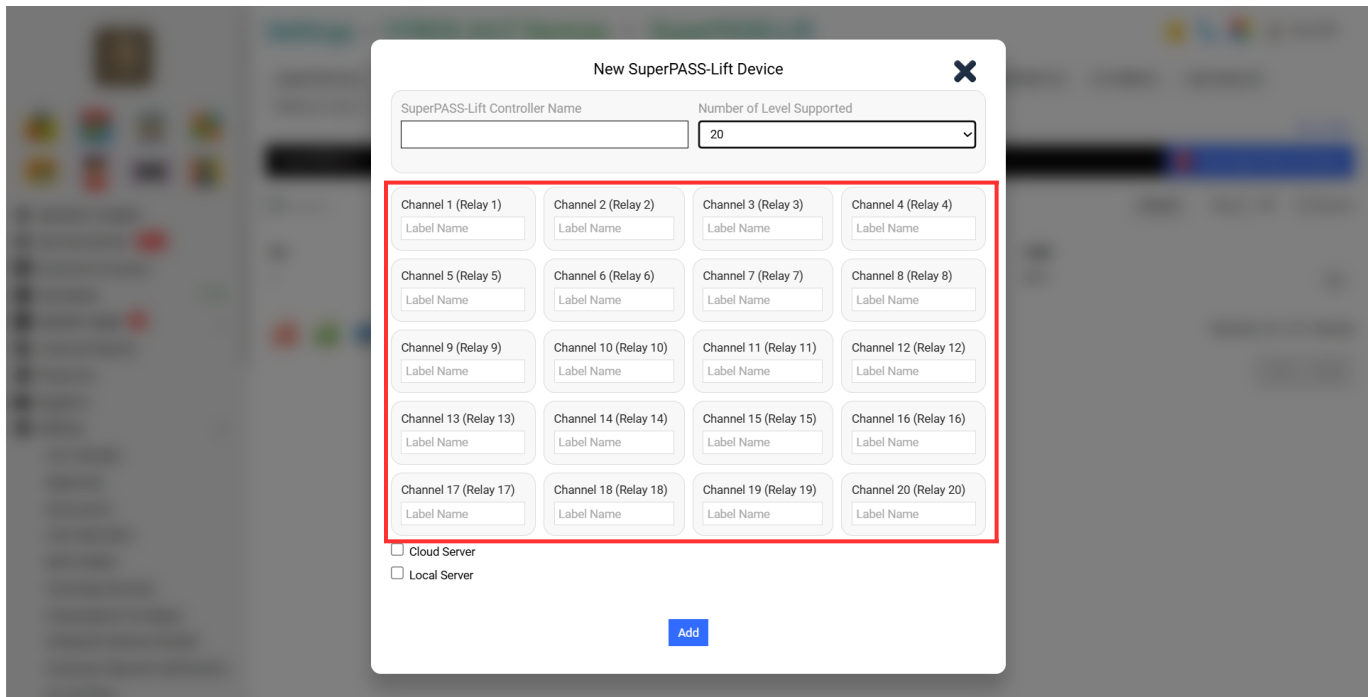
Step 2:

Select **“Number of Level Supported”**

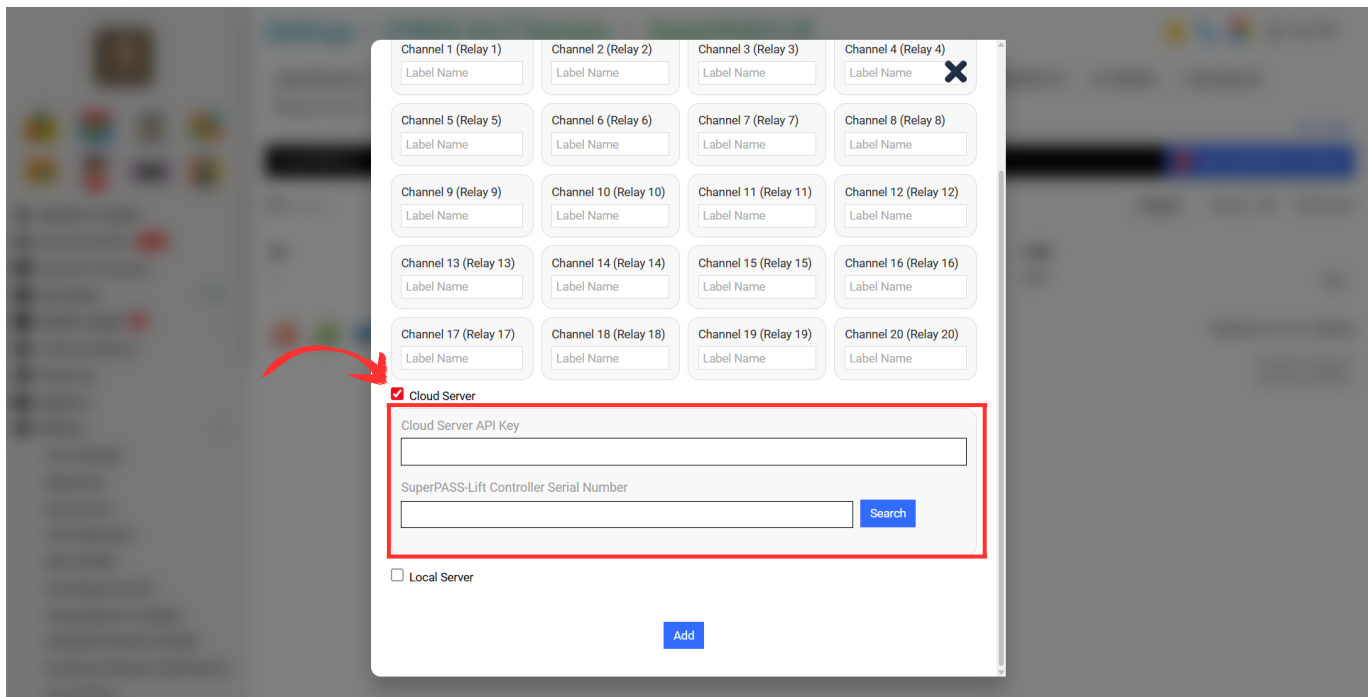


Step 3:

Fill in the Blank “Label Name in Channel”



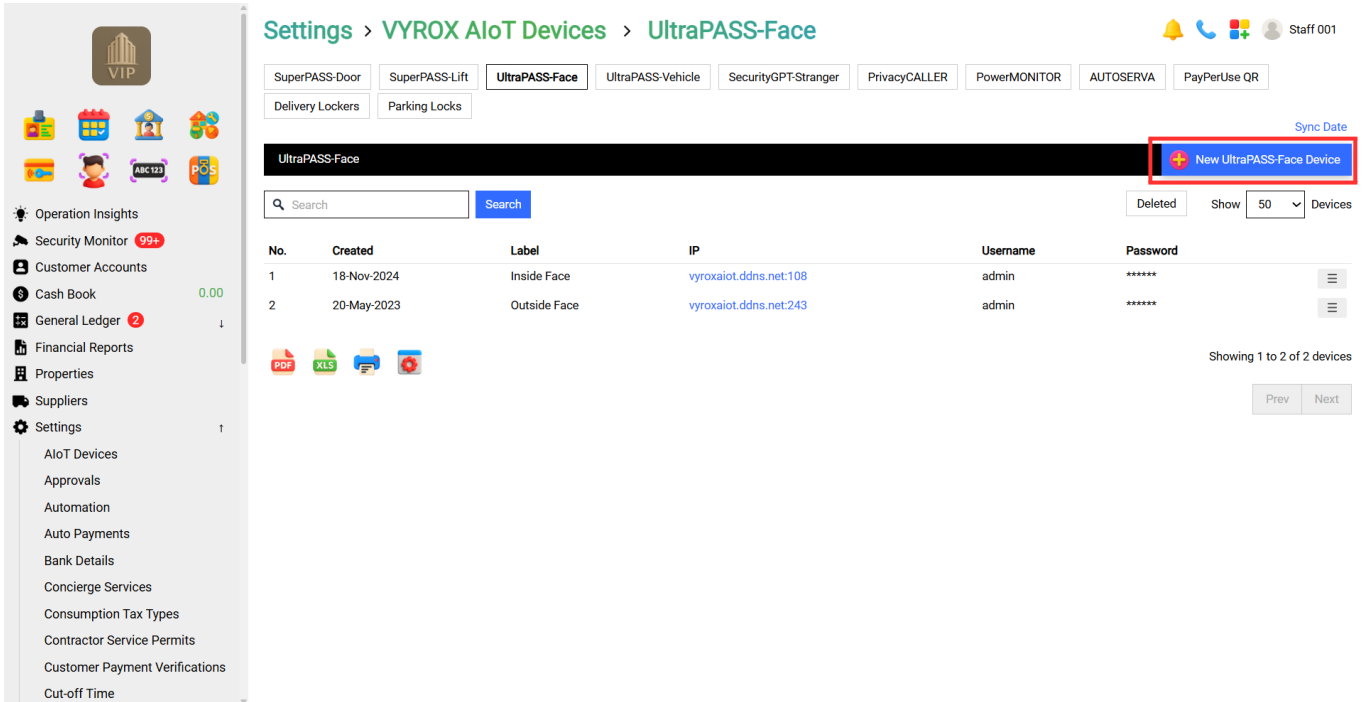
Step 4: Tick Cloud Server and Fill in the blank “Cloud Server API Key & SuperPASS-Door Controller Serial Number”.



After done keying in all information, Click “Add”

1.3 UltraPass Face

Go to **Setting > AIoT Devices > SuperPASS-Face**

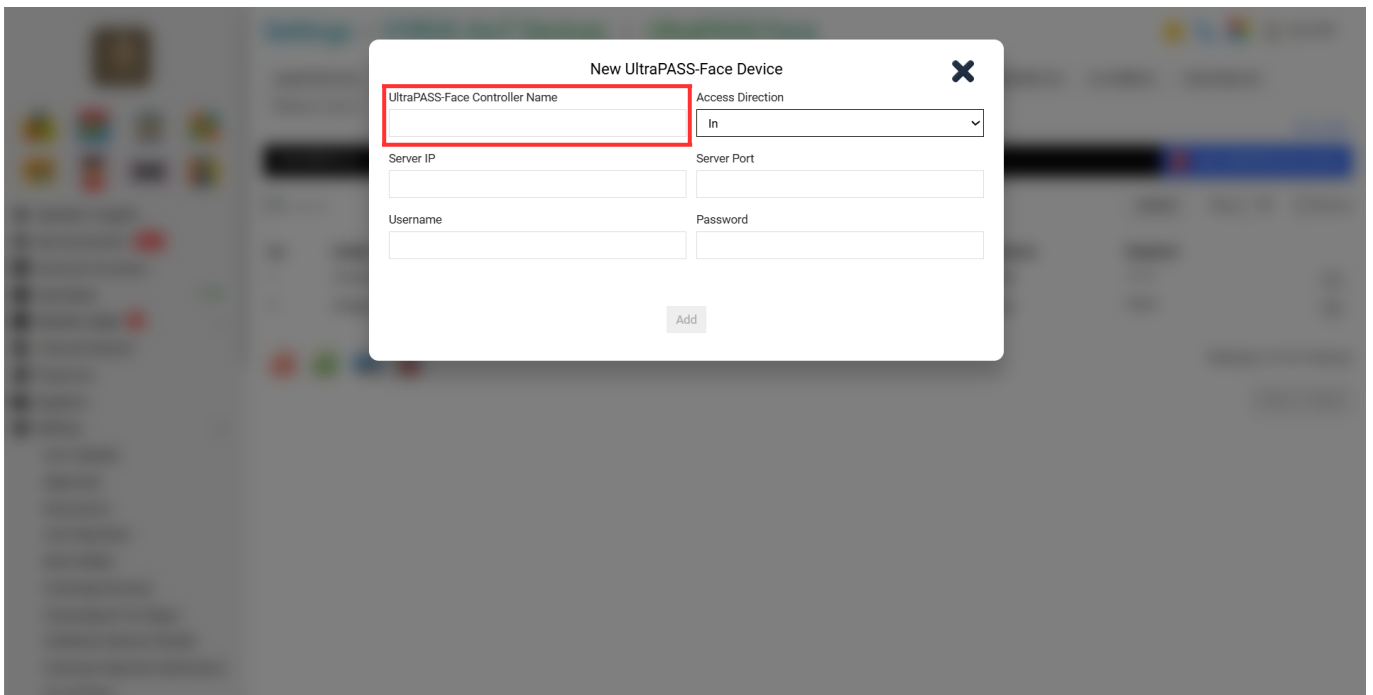


Details include:

1. SuperPass-Face Controller Name
2. Access Direction
3. Server IP
4. Server Port
5. Username & Password

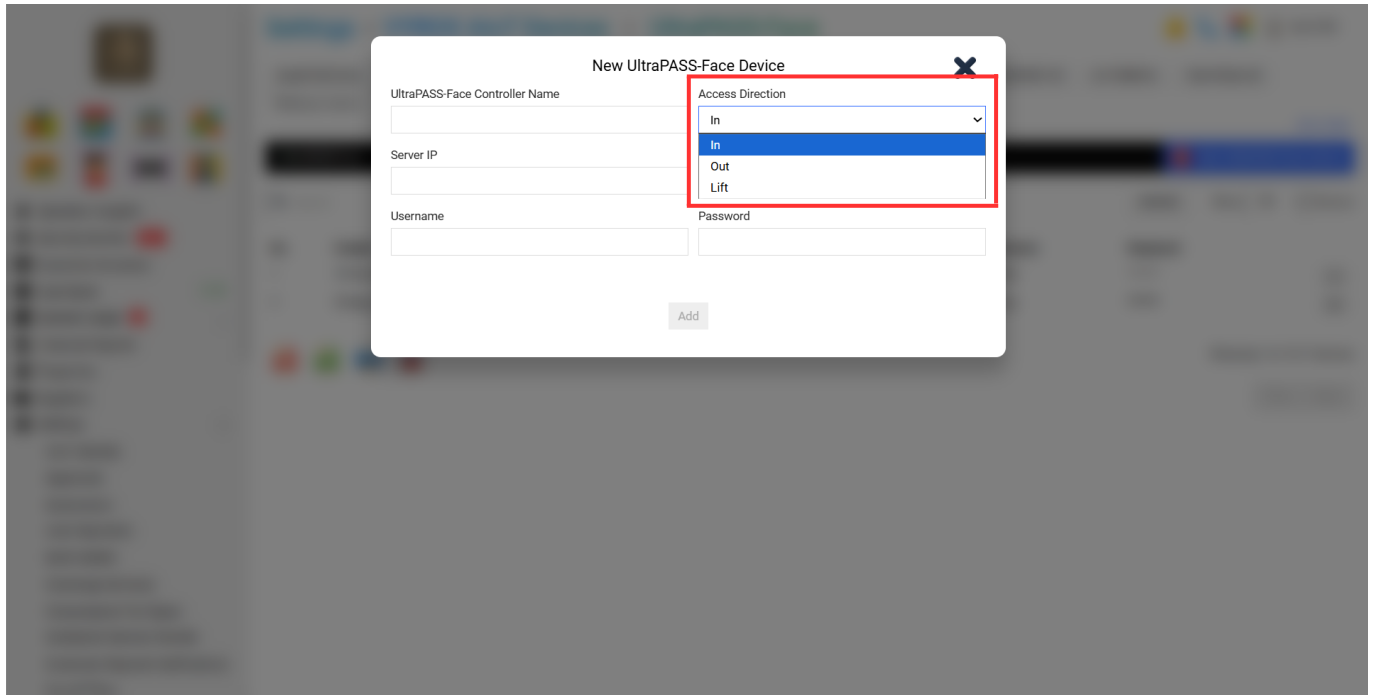
Step 1:

Fill in blank **“SuperPass-Face Controller Name”**



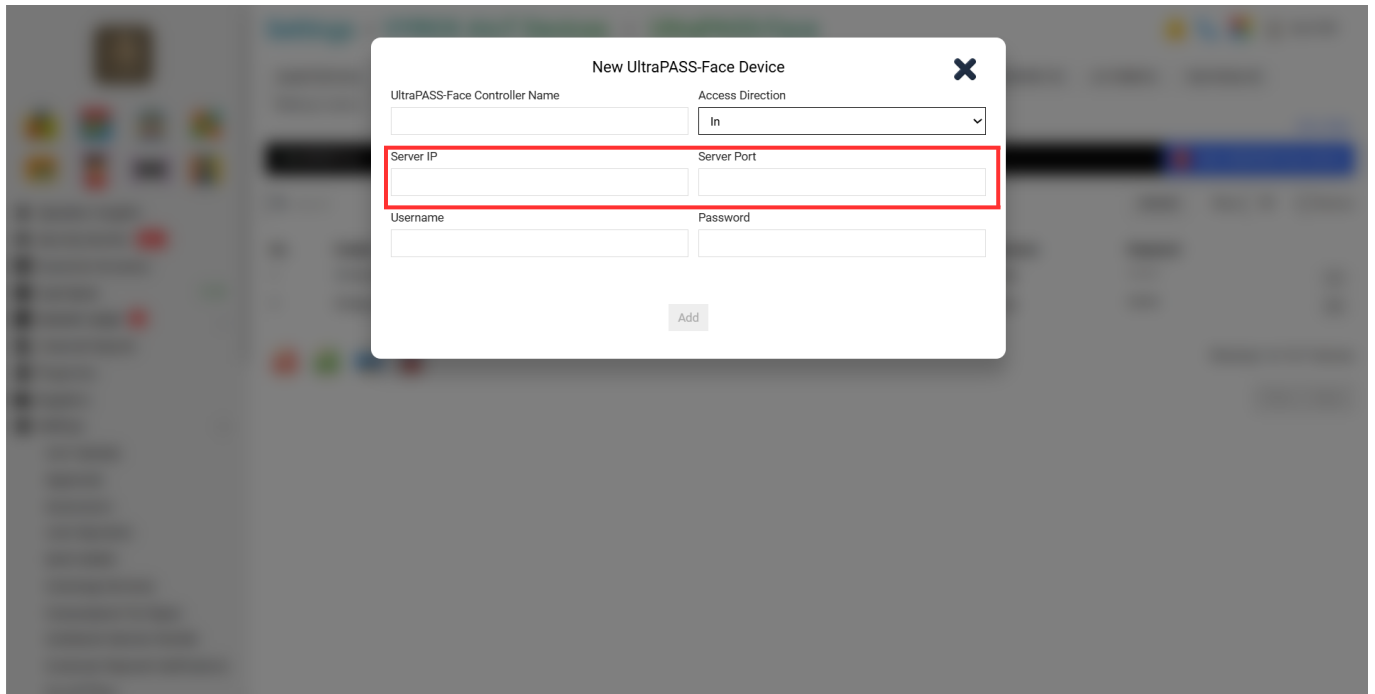
Step 2:

Select **“Access Direction”**

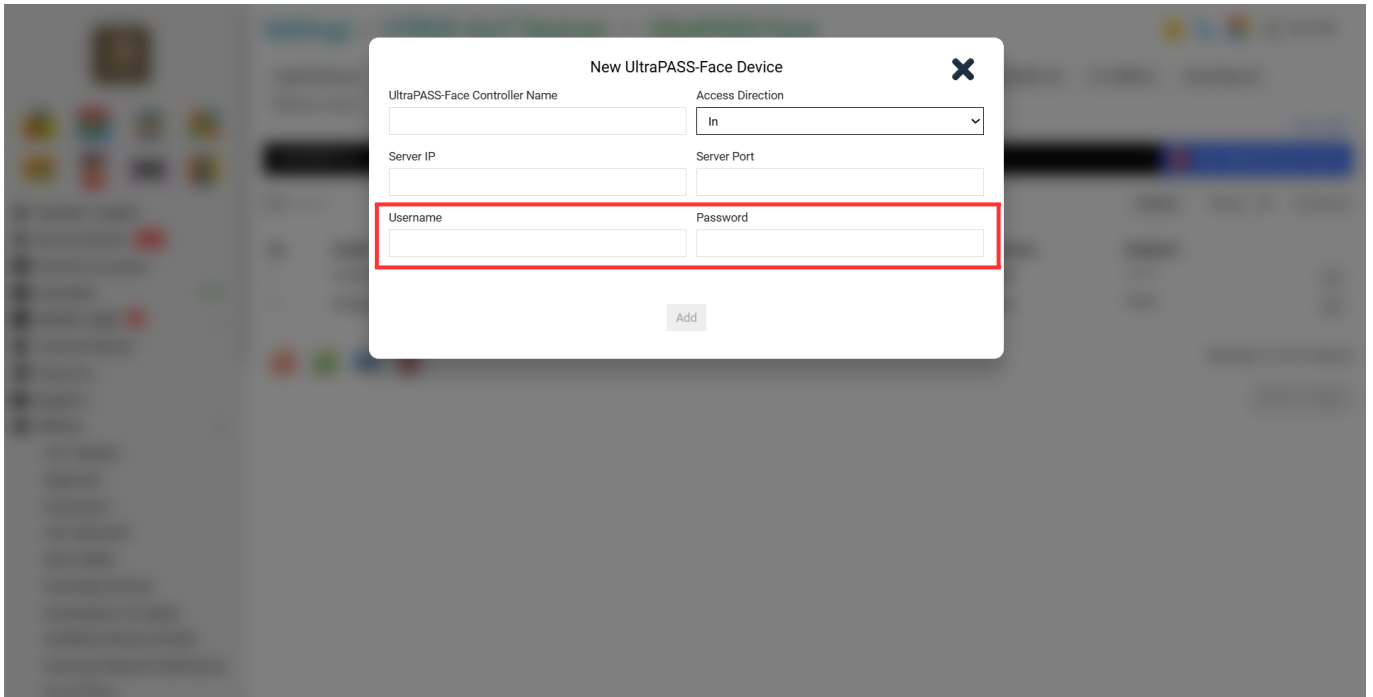


Step 3:

Fill in the Blank **“Server IP & Server Port”**



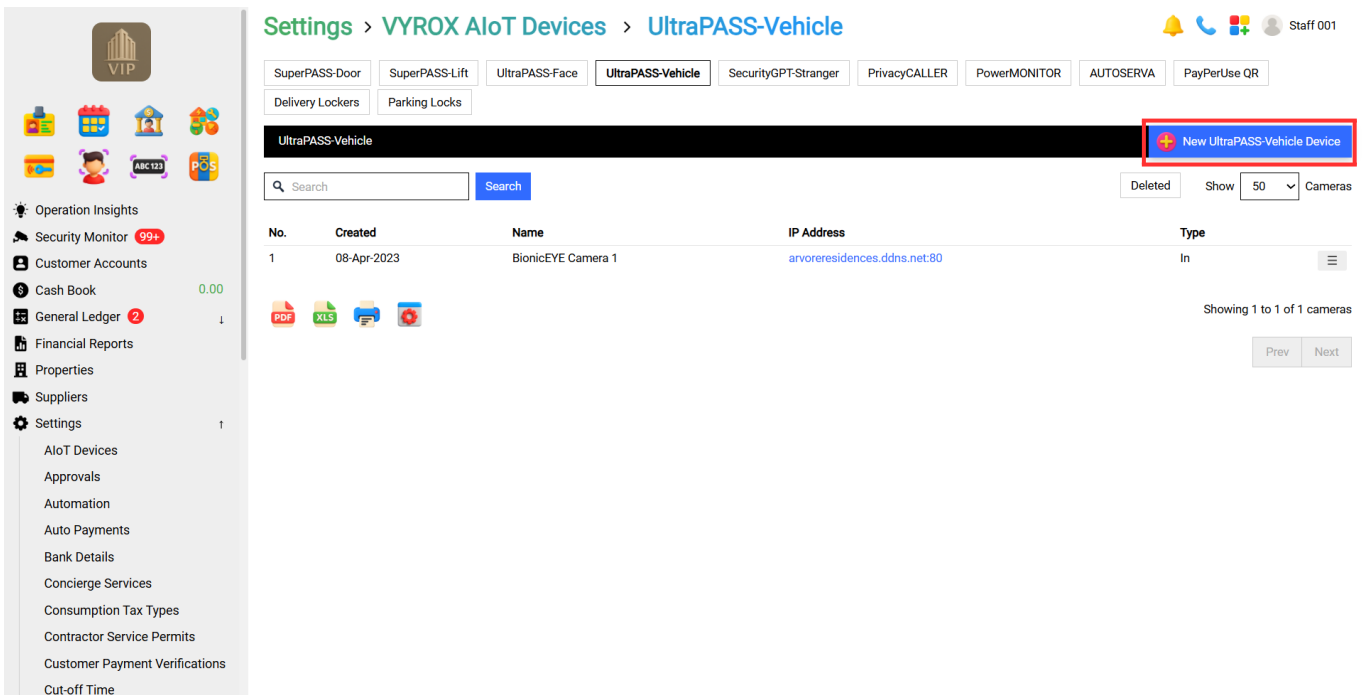
Step 4: Fill in the blank **“Username & Password”**.



After done keying in all information, Click “Add”

1.4 UltraPass Vehicle

Go to **Setting > AIoT Devices > SuperPass Vehicle**

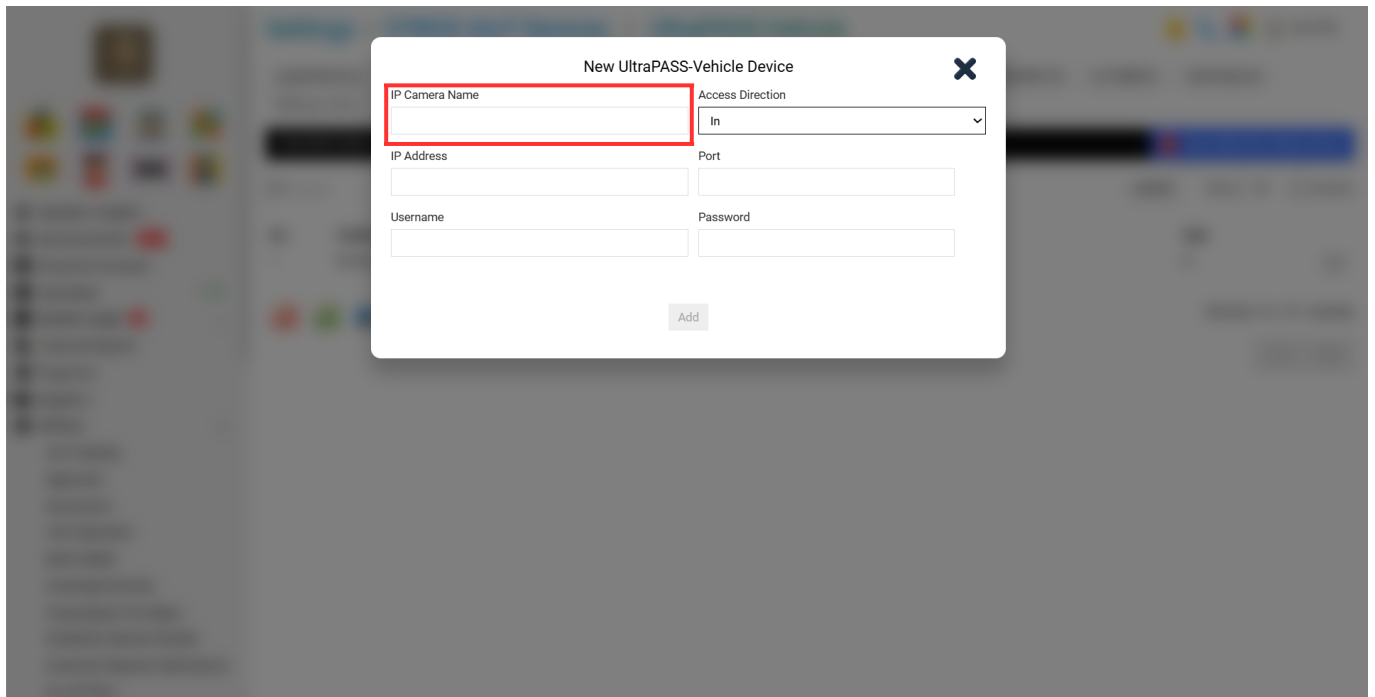


Details include:

1. IP Camera Name
2. Access Direction
3. IP Address & Port
4. Server Port
5. Username & Password

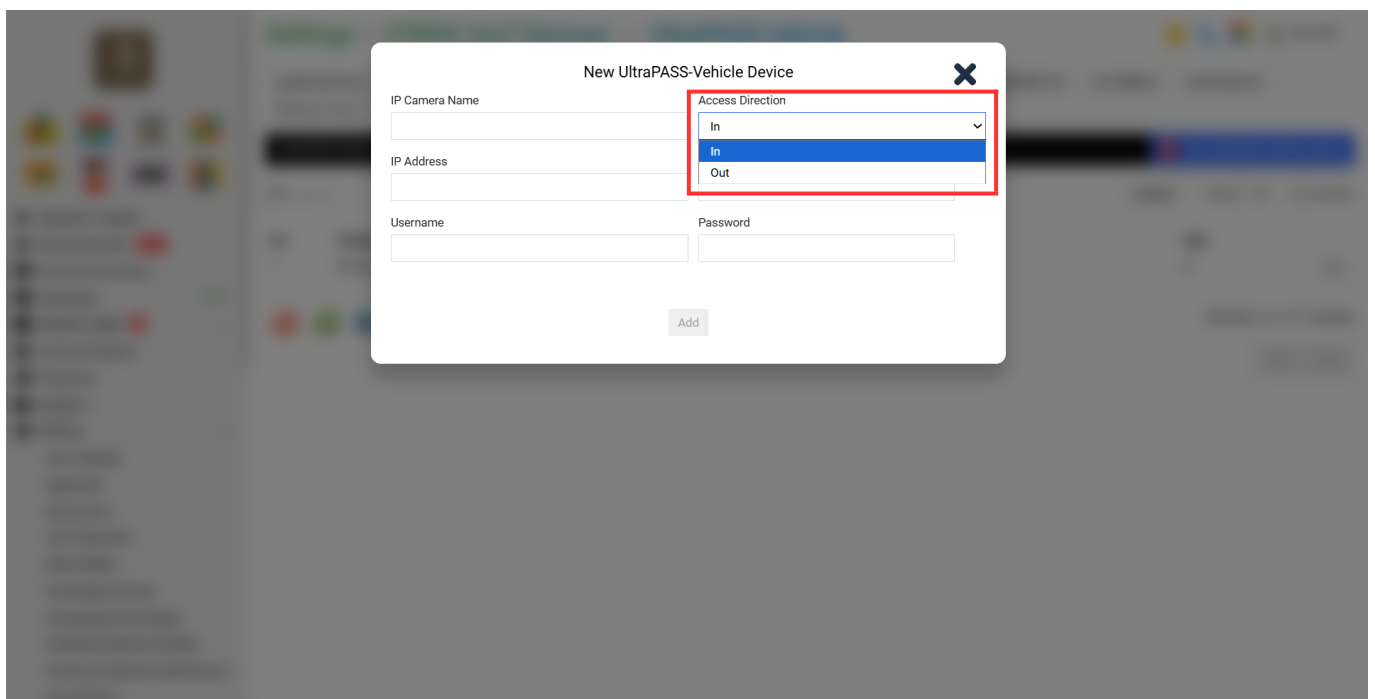
Step 1:

Fill in blank **“IP Camera Name”**



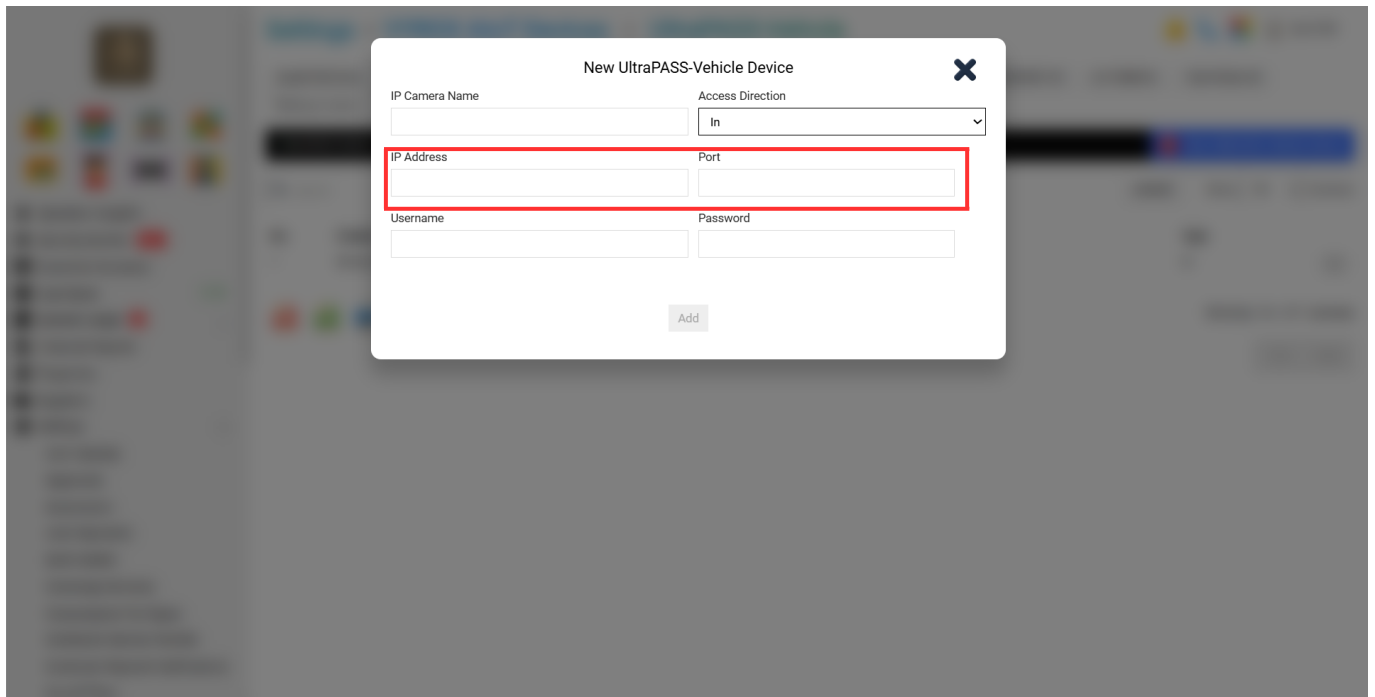
Step 2:

Select **“Access Direction”**

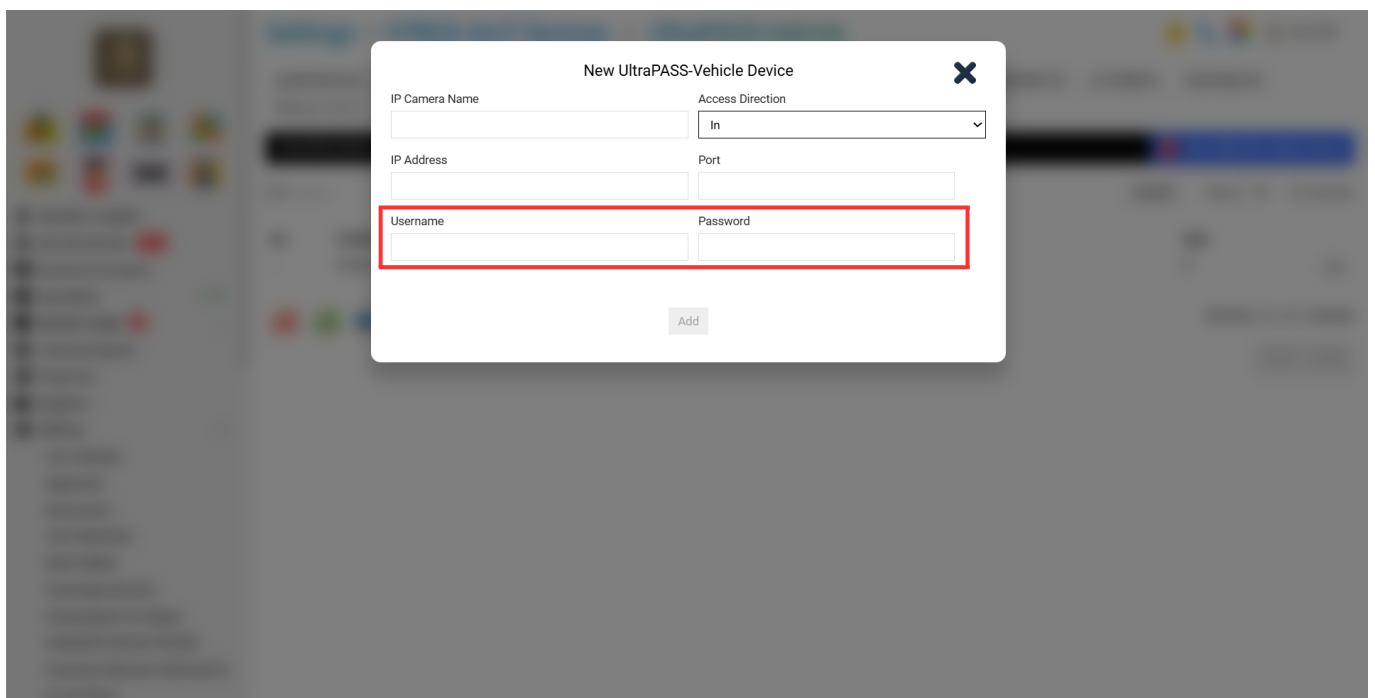


Step 3:

Fill in the Blank **“IP Address & Port”**



Step 4: Fill in the blank **“Username & Password”**.



After done keying in all information, Click **“Add”**

2. CONFIGURATION INSTRUCTIONS FOR PROPERTIES

This guide shows you step-by-step how to set up the Properties Unit part of the VYROX VIP Smart Integrated Property Management System, which was created by VYROX INTERNATIONAL SDN BHD. Property managers, building officials, and facility workers can create and manage each unit, ensuring that the information about every unit is always accurate. Then, each unit can be easily connected to access control modules like UltraPass Face for managing vehicle entry, UltraPass Lift for controlling door entry, SuperPass-Door for controlling door entry, and UltraPass Vehicle for controlling lift access. This way, unit records can be directly linked to automated and secure access permissions.

2.1 Configuration Properties

Go to **Properties > Units**

PIC

Details include:

1. The Floor(s) Where This Property Is Situated
2. Default SuperPASS-Door Settings for Main and Sub User Accounts
3. Default SuperPASS-Lift Settings for Main and Sub User Accounts
4. Default UltraPASS-Face Settings for Main and Sub User Accounts
5. Default UltraPASS-Vehicle Settings for Main and Sub User Accounts
6. Visitor Type(s) Available for Selection During New Visitor Registration For This Property

Step 1

Tick, "The Floor(s) Where This Property Is Situated"

PIC

*Note: Please tick to follow the unit-level floor and block. Step 2 **Tick, "Default SuperPASS-Door Settings for Main and Sub User Accounts"** PIC *Note: Please tick which one the unit uses for door access.***

From:

<https://www.vyrox.com/wiki/> - **VYROX Wiki**

Permanent link:

https://www.vyrox.com/wiki/doku.php?id=access_control_system&rev=1756097709

Last update: **2025/08/25 04:55**

