

ACCESS CONTROL SYSTEM

Introduction

An access control system is a security solution designed to regulate and monitor entry to physical or digital spaces, ensuring that only authorised individuals gain access. Access control systems improve safety, make operations easier, and safeguard important assets by using technologies like key cards, fingerprints, QR codes, and password authentication. Residential buildings, commercial properties, and industrial facilities widely use these systems to effectively manage the movement of people and vehicles. Beyond security, access control systems also provide administrators with valuable data to monitor activities, improve efficiency, and enforce policies, making them an essential component of modern property and organisational management.

1. AIoT DEVICES

This tutorial offers a thorough process for using the VYROX VIP Smart AIoT Devices, created by VYROX INTERNATIONAL SDN BHD, to optimise and improve building and facility operations. Property managers, building administrators, and facility operators may easily connect and operate several systems, including SuperPass-Door, SuperPass-Lift, UltraPass Face, and UltraPass Vehicle, with the help of VYROX's VIP AIoT tools, a full suite of intelligent solutions. These AIoT devices provide for improved security, more operational efficiency, and more intelligent decision-making by integrating hardware and software into a single, cohesive platform.

1.1 SuperPass-Door

Go to **Setting > AIoT Devices > SuperPASS-Door**

The screenshot shows the 'Settings > VYROX AIoT Devices > SuperPASS-Door' interface. The left sidebar contains various system settings. The top navigation bar includes buttons for different device types: SuperPASS-Door, SuperPASS-Lift, UltraPASS-Face, UltraPASS-Vehicle, SecurityGPT-Stranger, PrivacyCALLER, PowerMONITOR, AUTOSERVA, and PayPerUse QR. Below this, there are buttons for Delivery Lockers and Parking Locks. The main content area is titled 'SuperPASS-Door' and features a search bar, a 'Deleted' button, and a 'Show 50 Devices' dropdown. A table lists two devices:

No.	Created	Serial No.	Label
1	07-May-2025	253257130	Access Door Demo
2	14-Aug-2025	253228206	Testing Board

Below the table are icons for PDF, XLS, and other file formats. A 'Showing 1 to 2 of 2 devices' indicator and 'Prev/Next' buttons are also present. A red box highlights the 'New SuperPASS-Door Device' button in the top right corner of the main content area.

Details include:

1. SuperPass-Door Controller Name
2. Number of Doors Supported
3. Label Name in Channel
4. Cloud Server
5. Cloud Server API Key
6. SuperPASS-Door Controller Serial Number

Step 1:

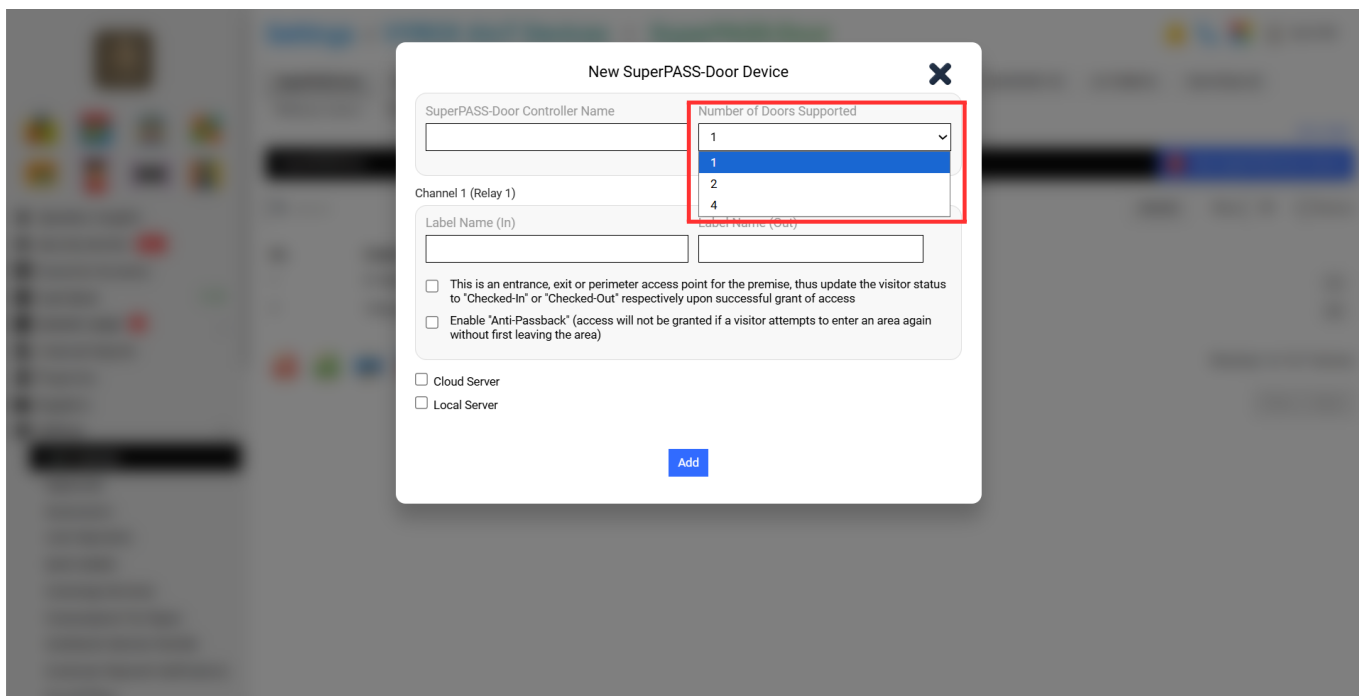
Fill in the blank. **“SuperPass-Door Controller Name”**

The screenshot shows the 'New SuperPASS-Door Device' modal form. The 'SuperPASS-Door Controller Name' field is highlighted with a red box. The form includes the following fields and options:

- SuperPASS-Door Controller Name (text input, highlighted)
- Number of Doors Supported (dropdown menu, value: 1)
- Channel 1 (Relay 1) section:
 - Label Name (In) (text input)
 - Label Name (Out) (text input)
- Checkboxes:
 - This is an entrance, exit or perimeter access point for the premise, thus update the visitor status to "Checked-In" or "Checked-Out" respectively upon successful grant of access
 - Enable "Anti-Passback" (access will not be granted if a visitor attempts to enter an area again without first leaving the area)
 - Cloud Server
 - Local Server
- 'Add' button at the bottom.

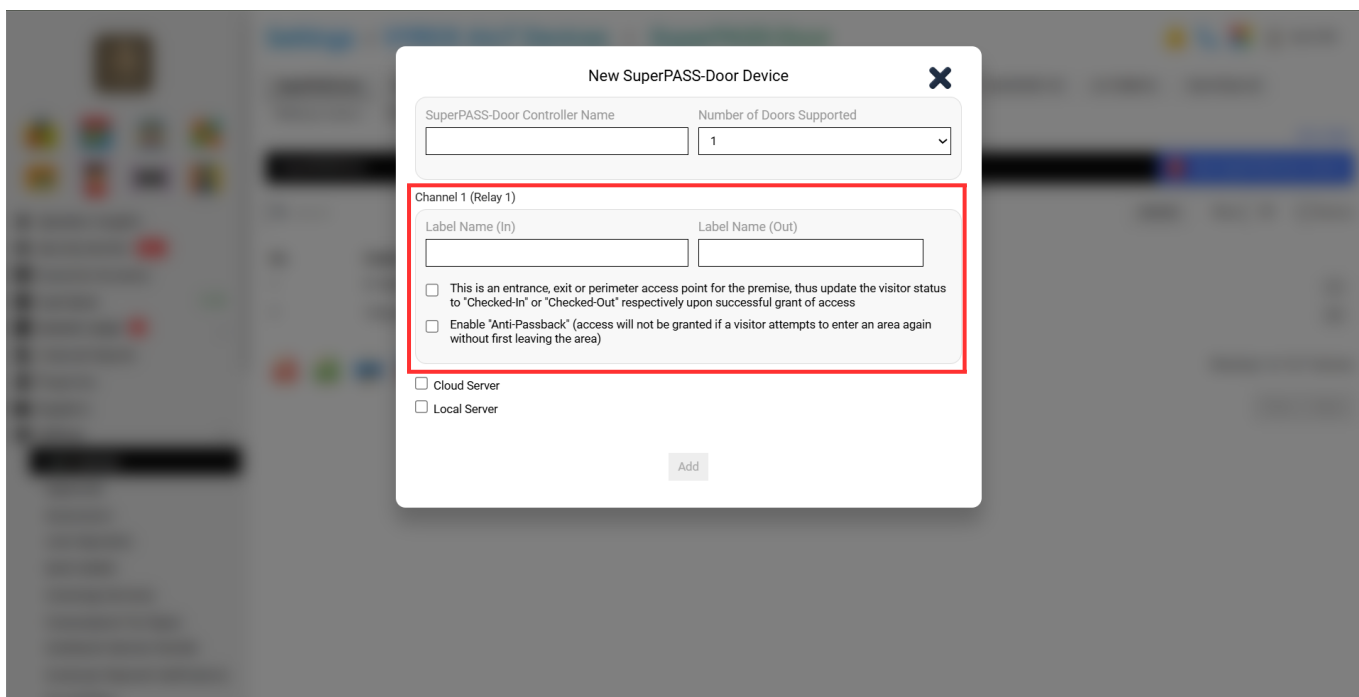
Step 2:

Select **“Number of Doors Supported”**

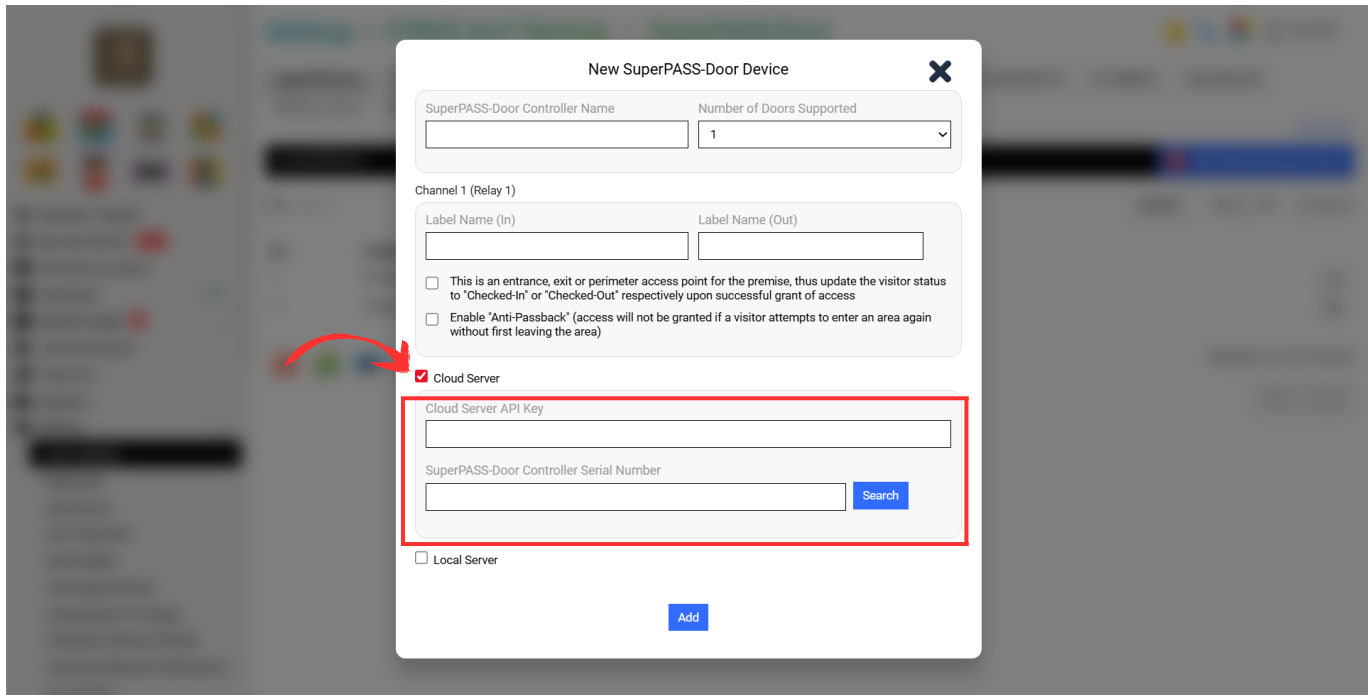


Step 3:

Fill in the Blank **“Label Name in Channel”**



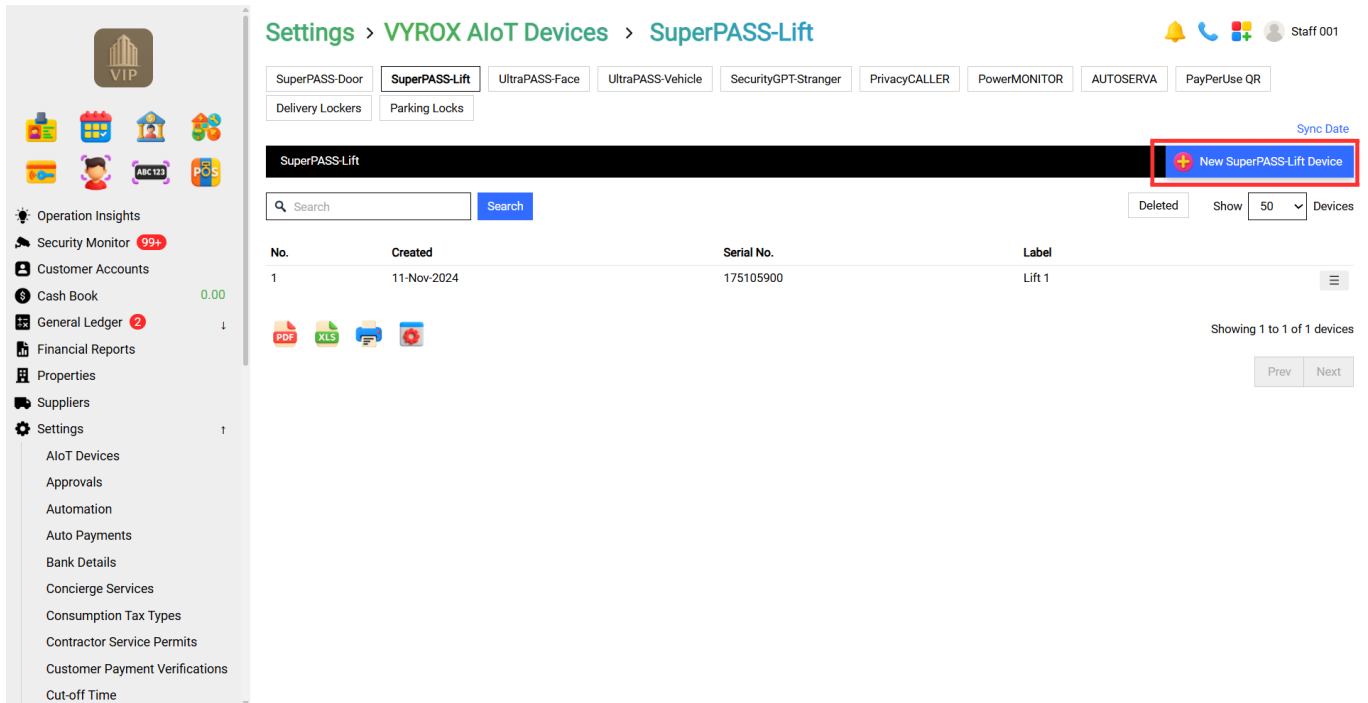
Step 4: Tick Cloud Server and Fill in the blank **“Cloud Server API Key & SuperPASS-Door Controller Serial Number”**.



After done keying in all information, Click "Add"

1.2 SuperPass-Lift

Go to **Setting > AIoT Devices > SuperPass-Lift**



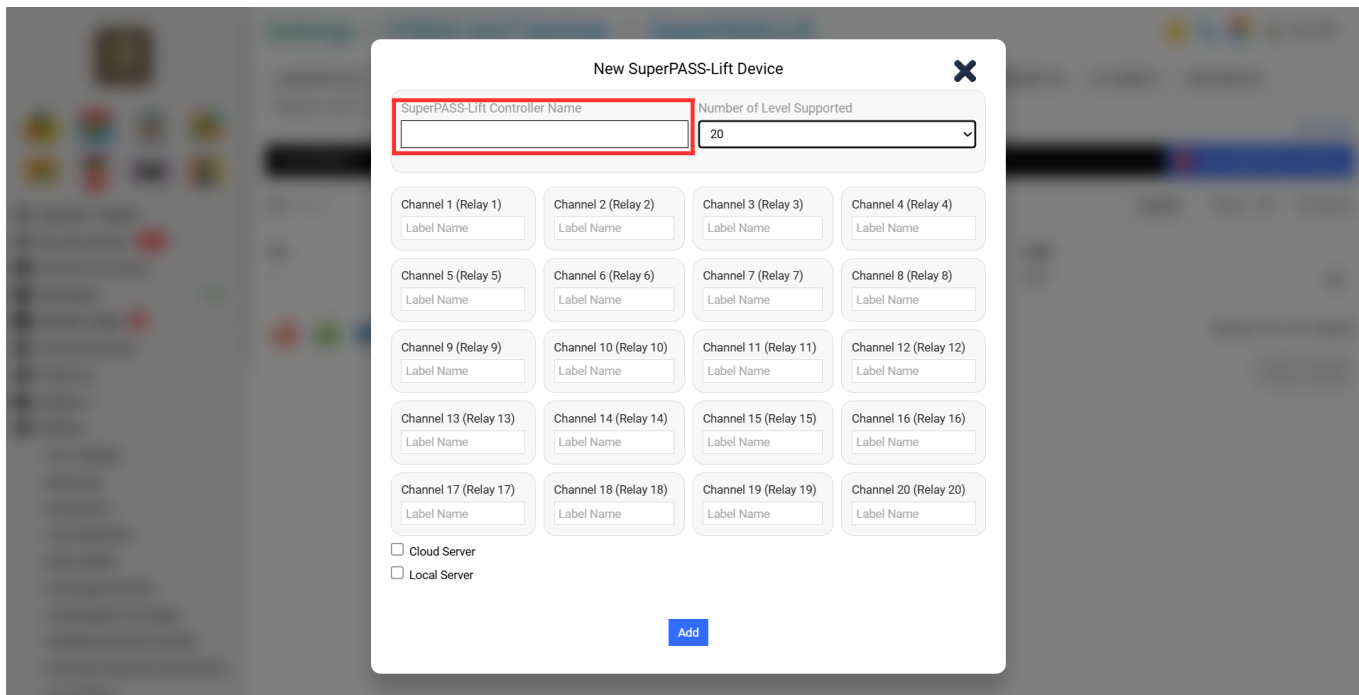
Details include:

1. SuperPass-Lift Controller Name
2. Number of Level Supported
3. Label Name in Channel
4. Cloud Server

- 5. Cloud Server API Key
- 6. SuperPASS-Lift Controller Serial Number

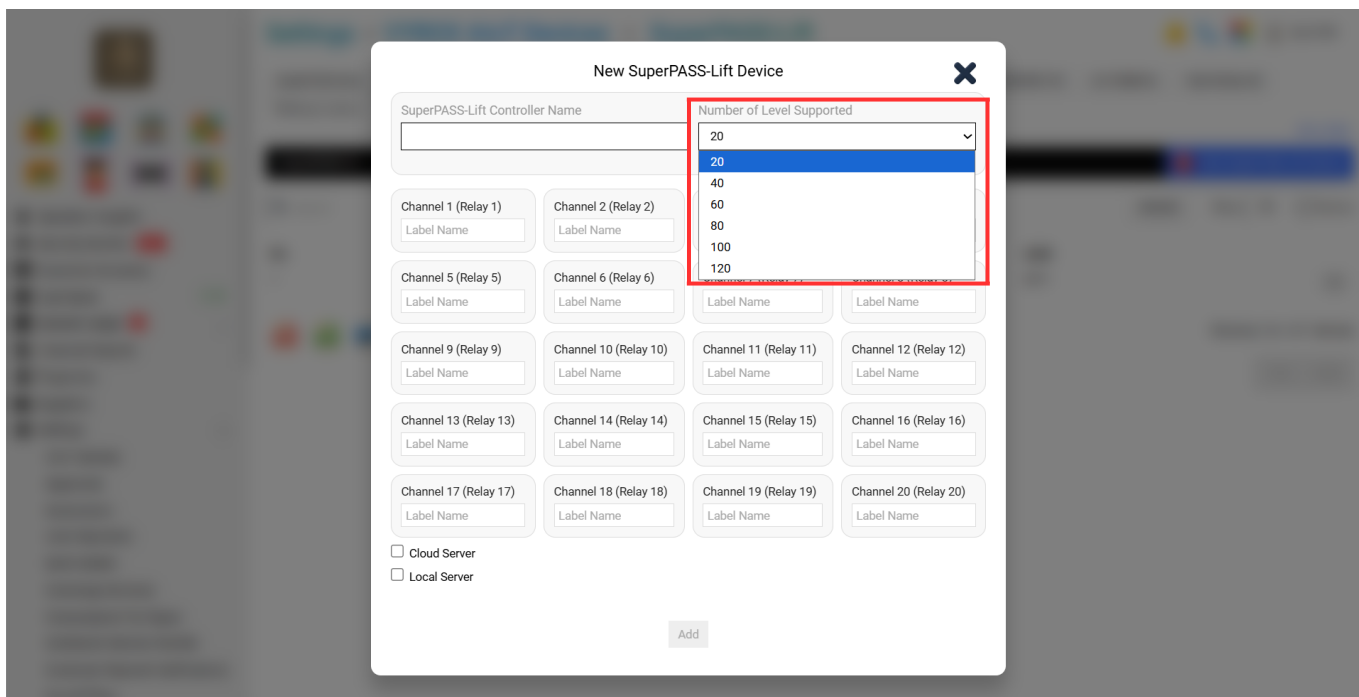
Step 1:

Fill in blank **“SuperPass-Lift Controller Name”**



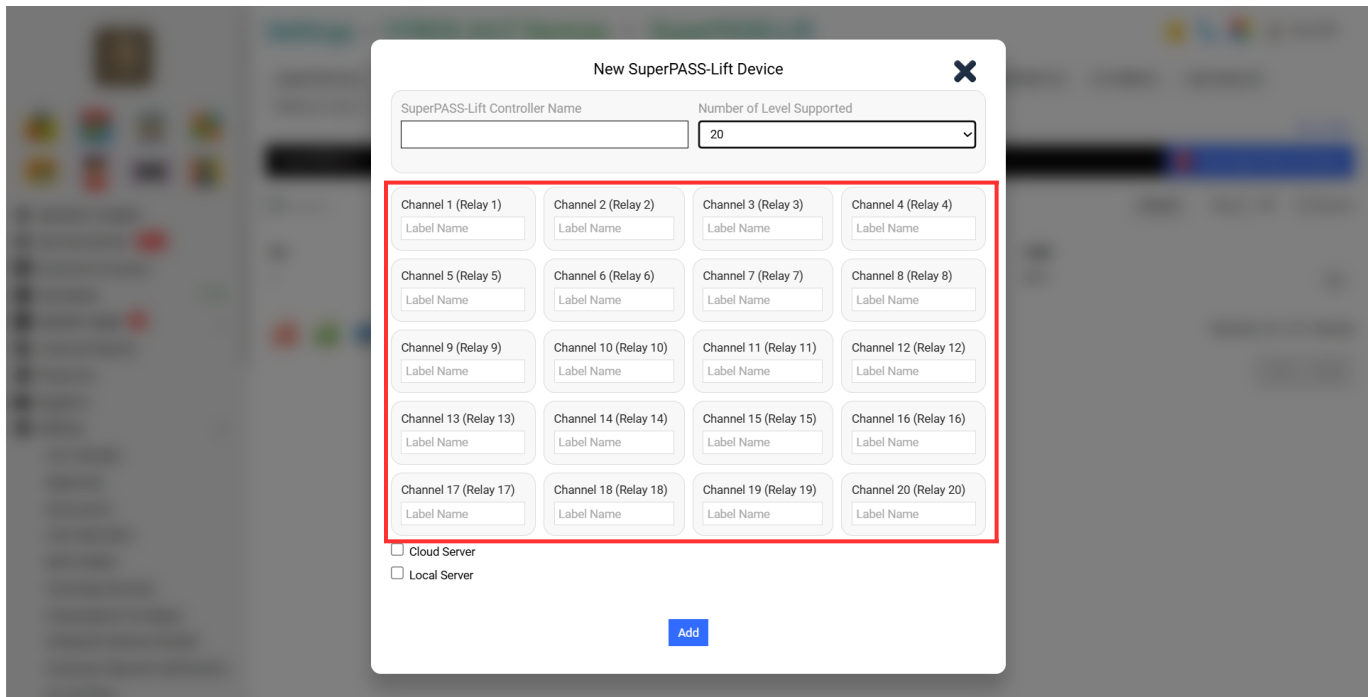
Step 2:

Select **“Number of Level Supported”**

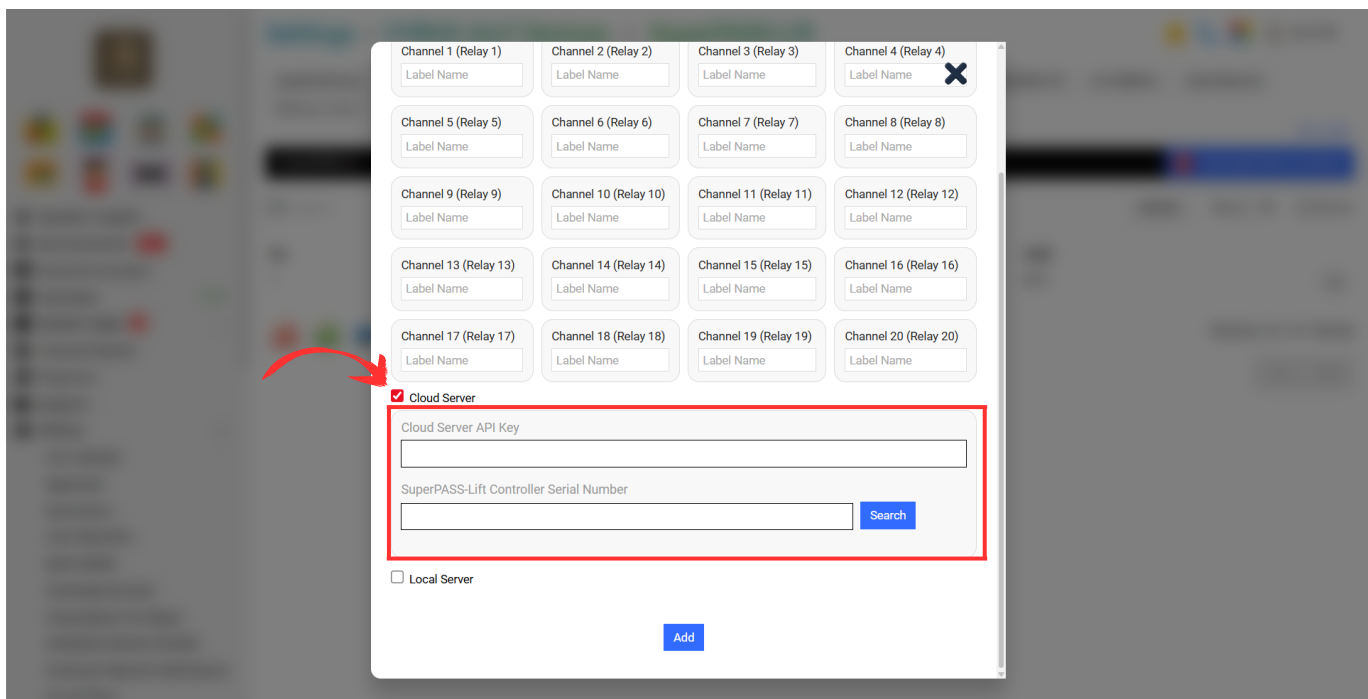


Step 3:

Fill in the Blank “Label Name in Channel”



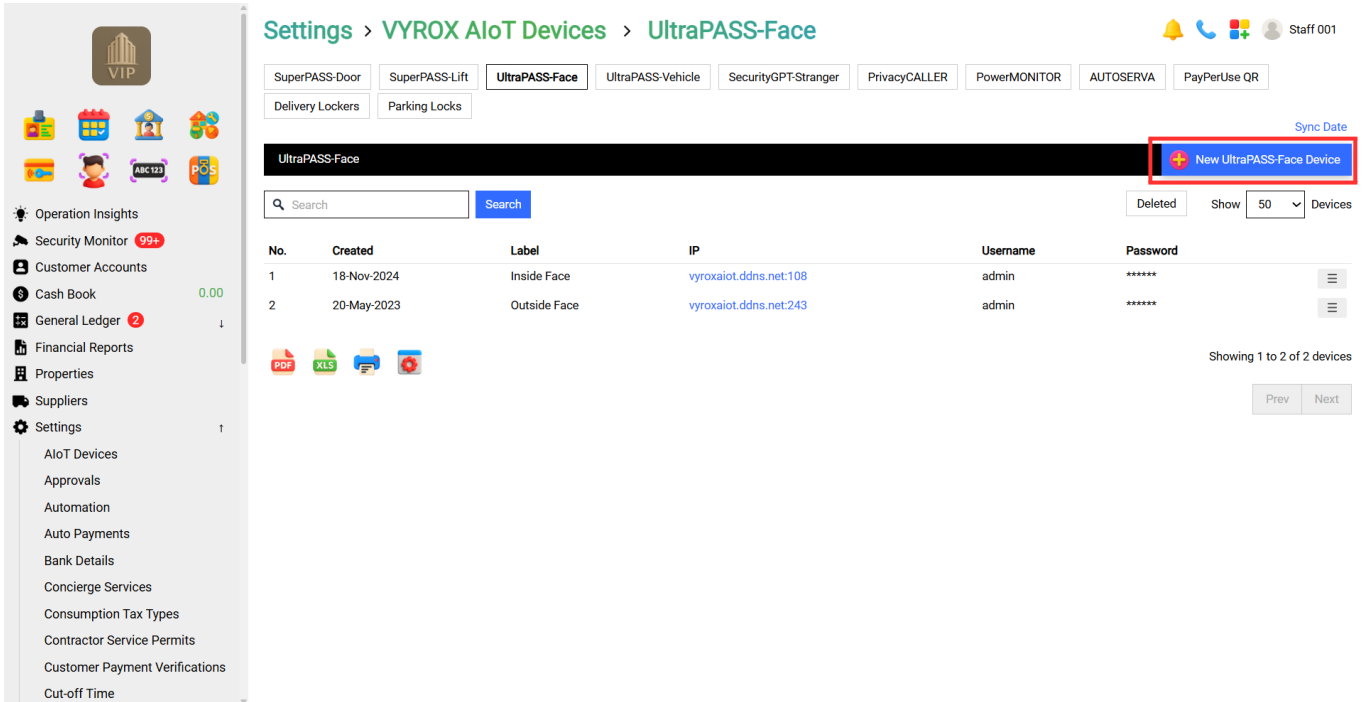
Step 4: Tick Cloud Server and Fill in the blank “Cloud Server API Key & SuperPASS-Door Controller Serial Number”.



After done keying in all information, Click “Add”

1.3 UltraPass Face

Go to **Setting > AIoT Devices > SuperPASS-Face**

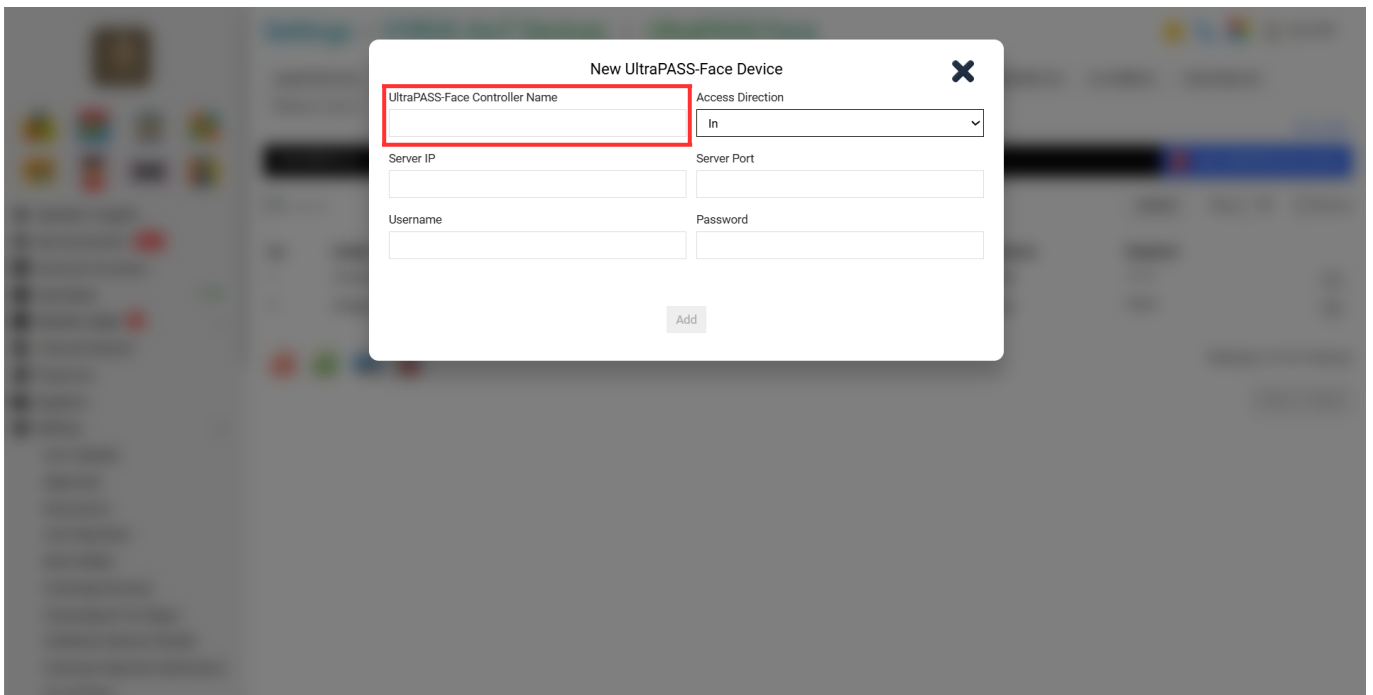


Details include:

- 1. SuperPass-Face Controller Name
- 2. Access Direction
- 3. Server IP
- 4. Server Port
- 5. Username & Password

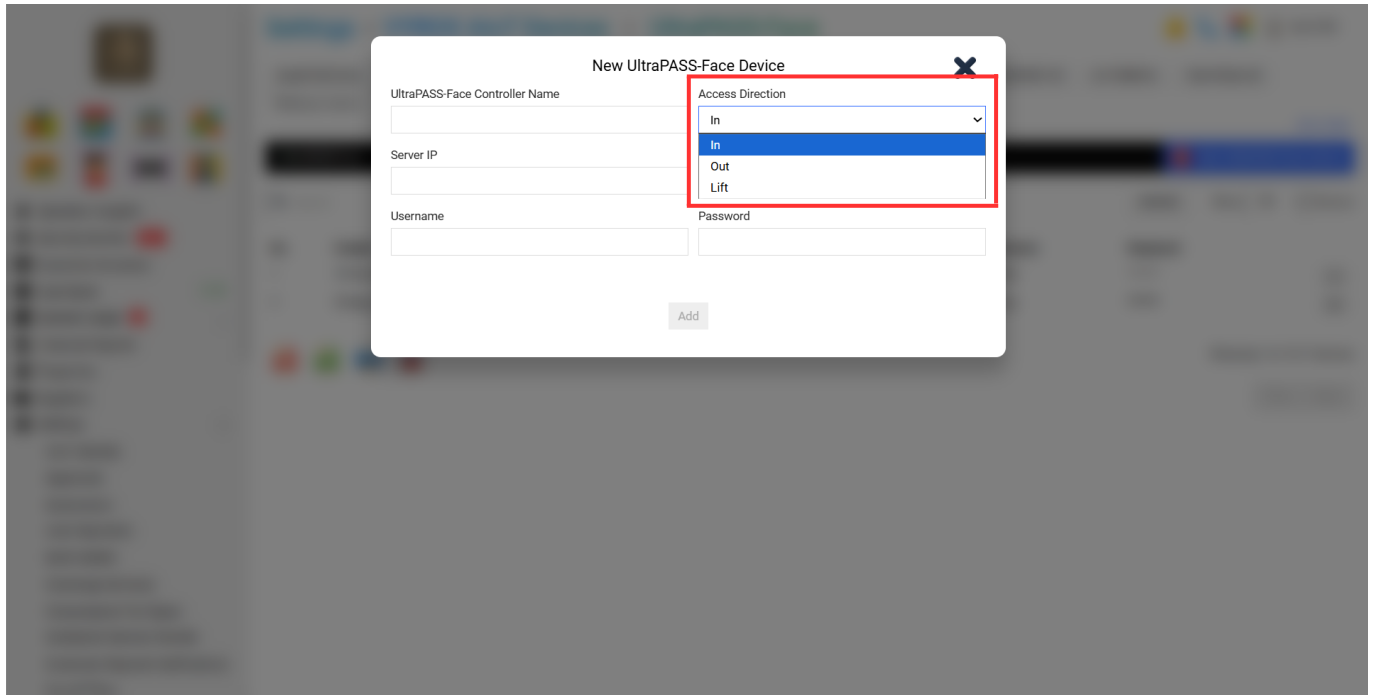
Step 1:

Fill in blank **“SuperPass-Face Controller Name”**



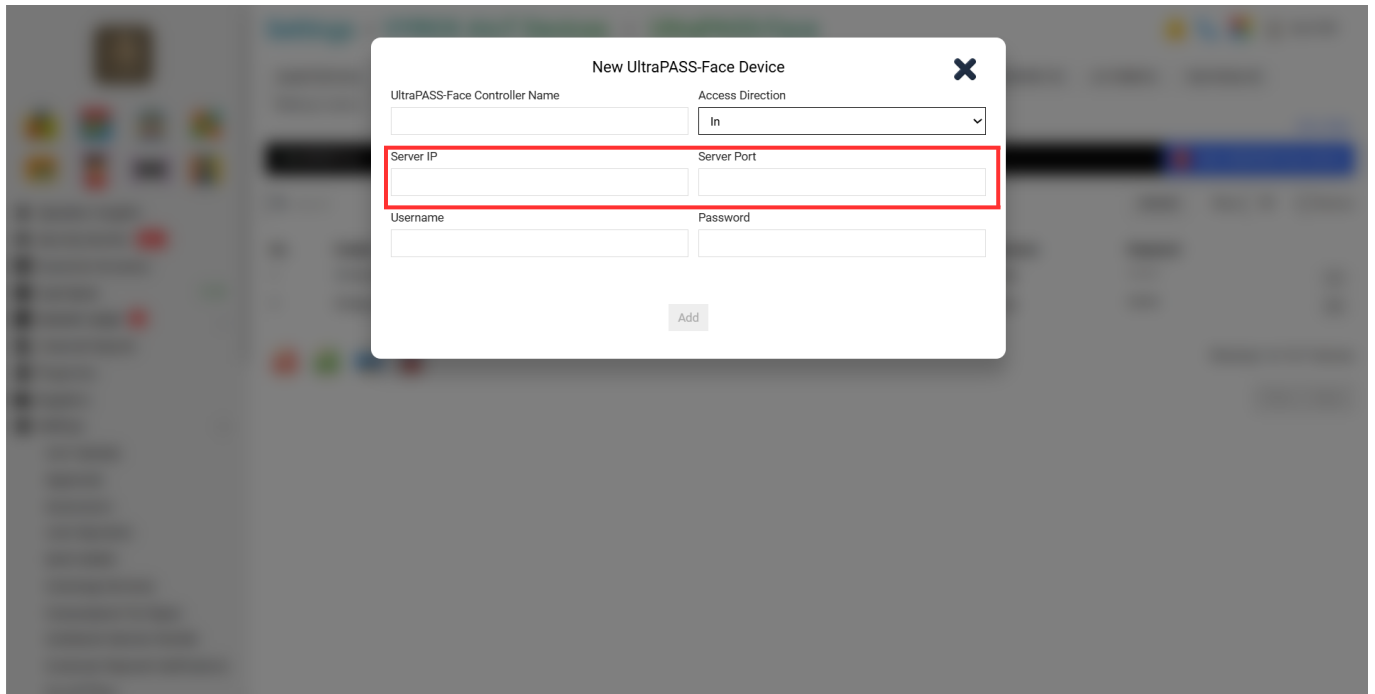
Step 2:

Select **“Access Direction”**

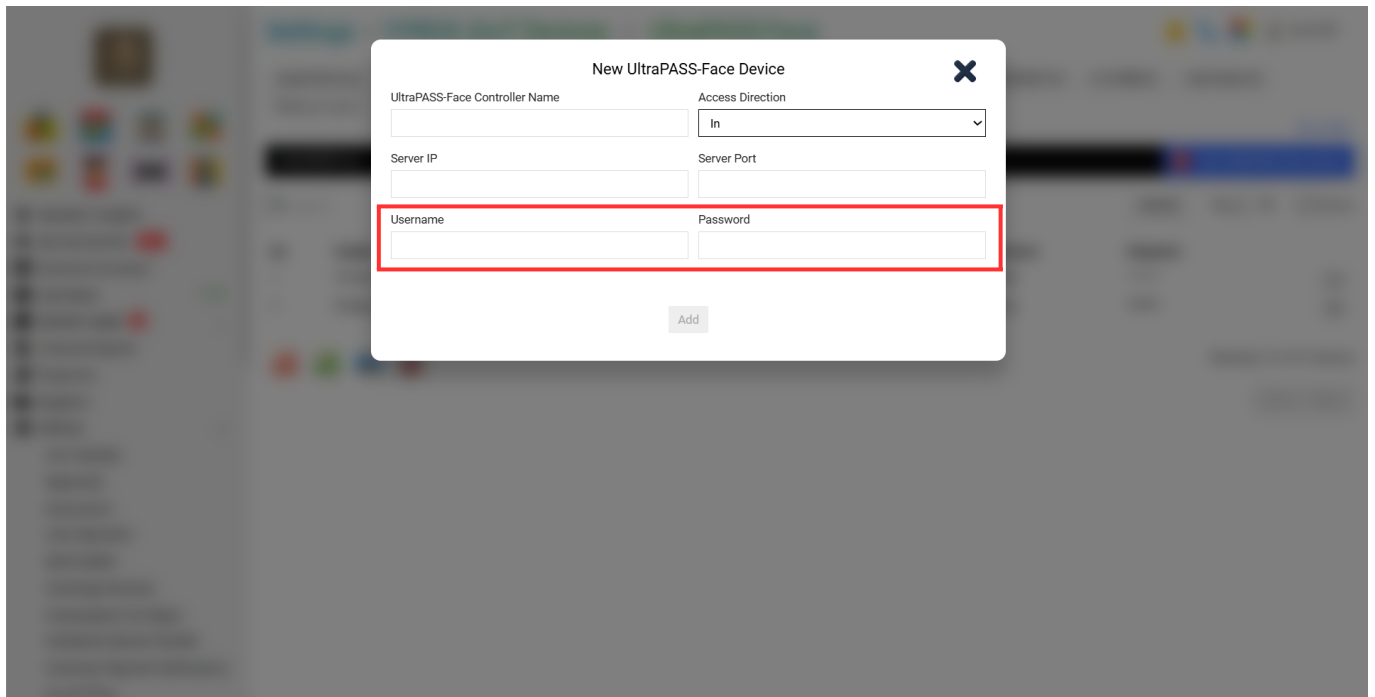


Step 3:

Fill in the Blank **“Server IP & Server Port”**



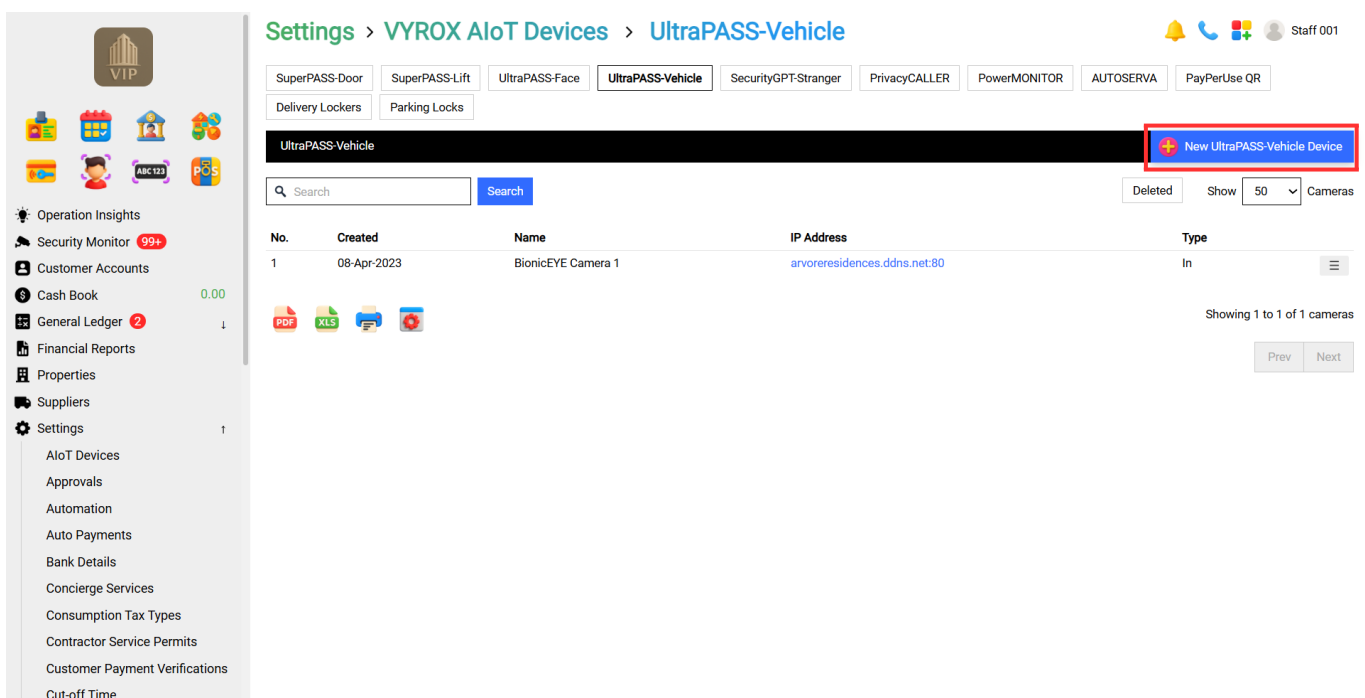
Step 4: Fill in the blank **“Username & Password”**.



After done keying in all information, Click “Add”

1.4 UltraPass Vehicle

Go to **Setting > AIoT Devices > SuperPass Vehicle**

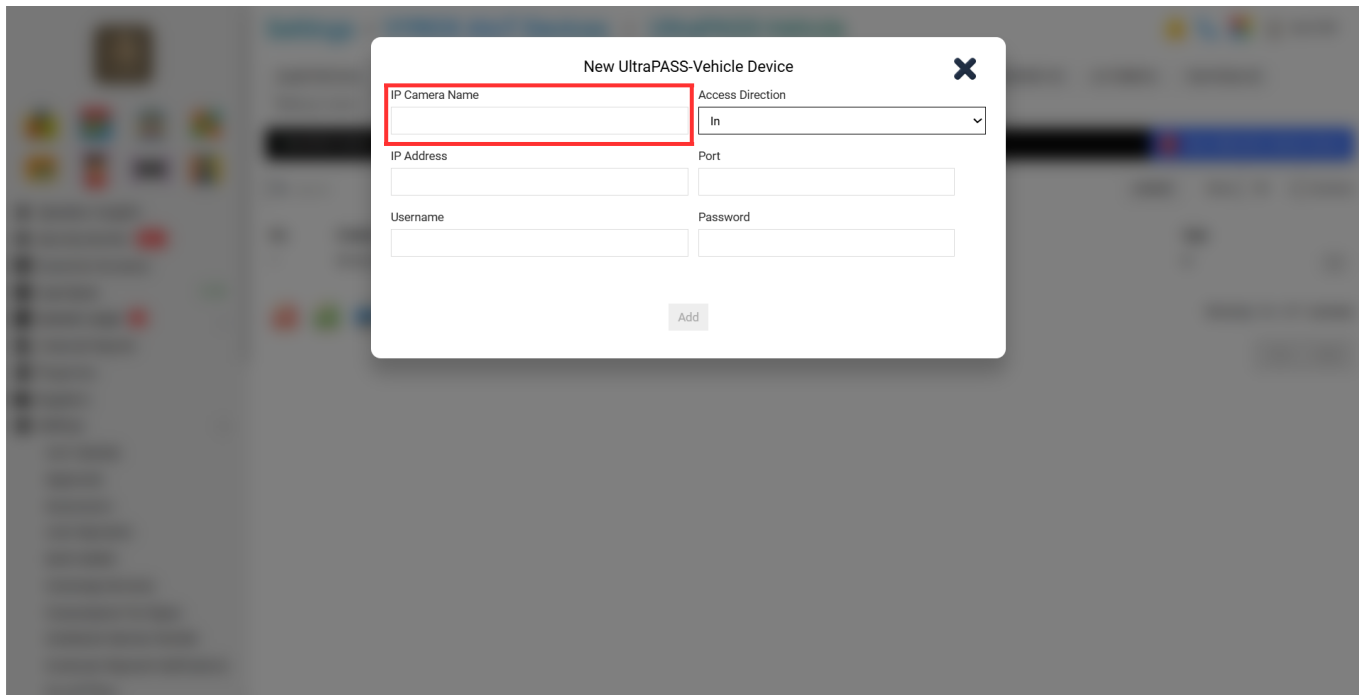


Details include:

1. IP Camera Name
2. Access Direction
3. IP Address & Port
4. Server Port
5. Username & Password

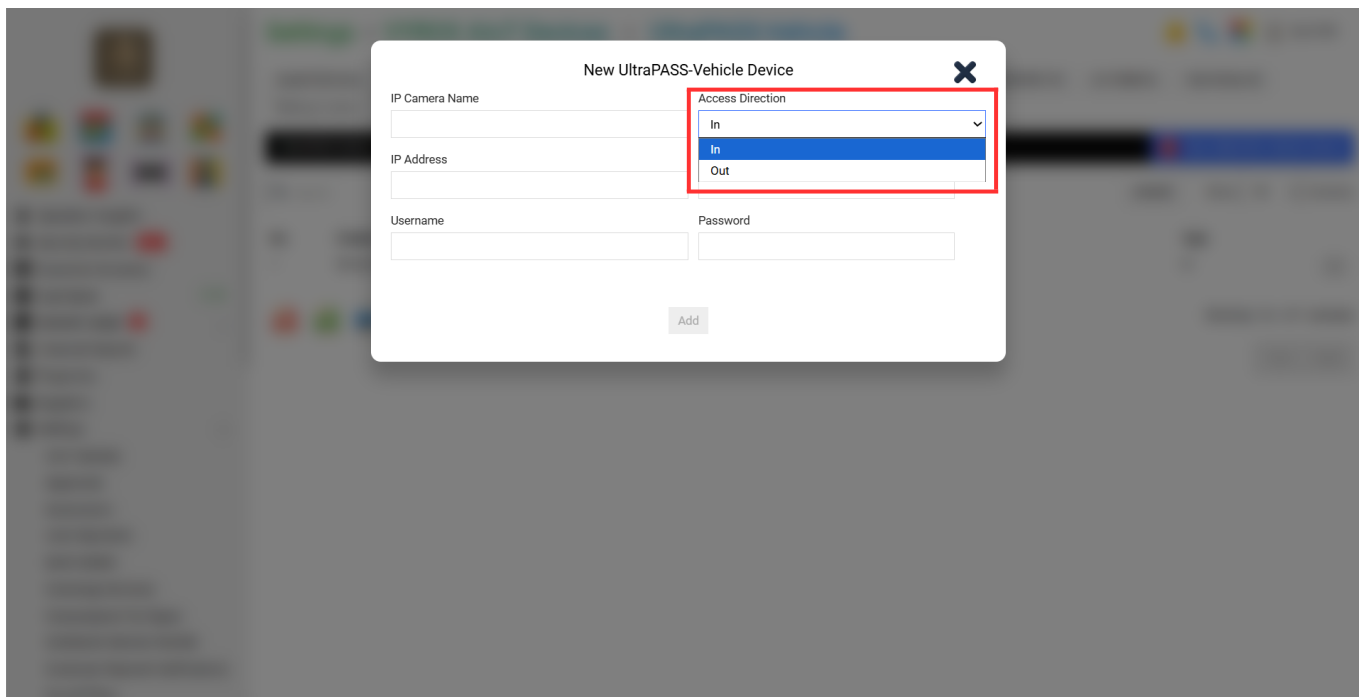
Step 1:

Fill in blank **“IP Camera Name”**



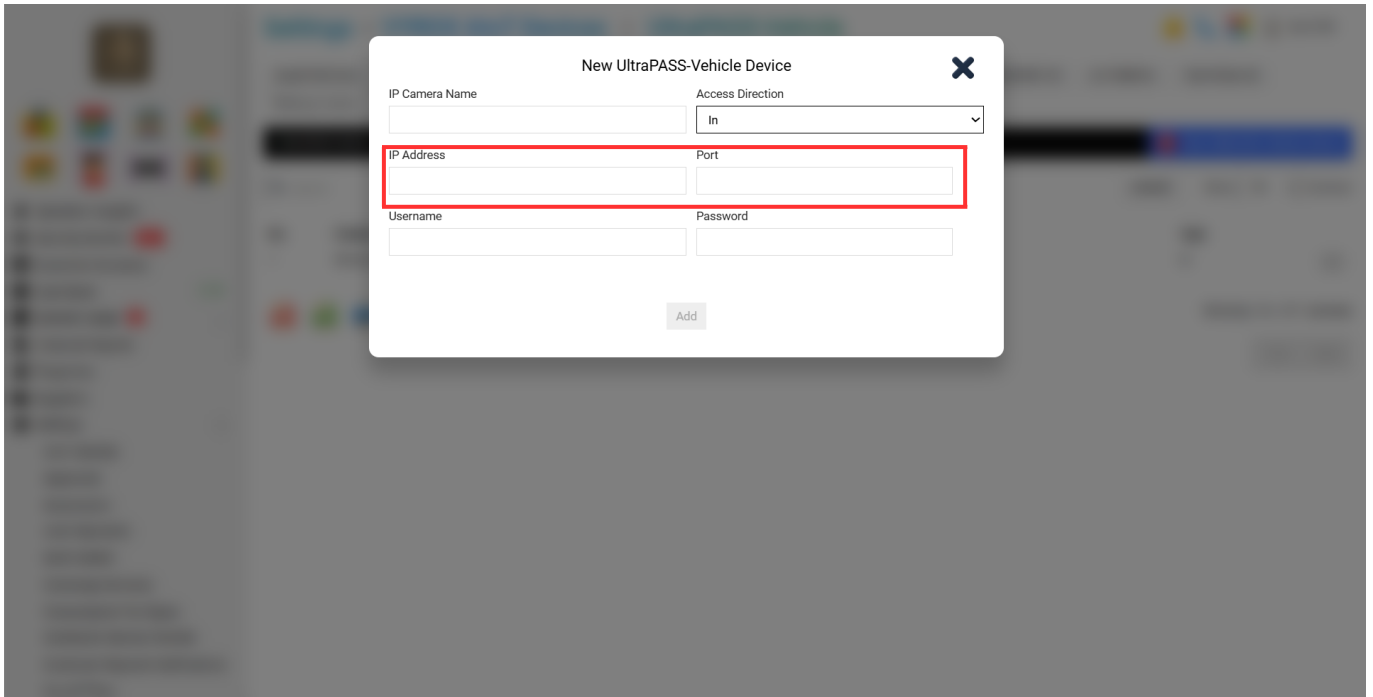
Step 2:

Select **“Access Direction”**

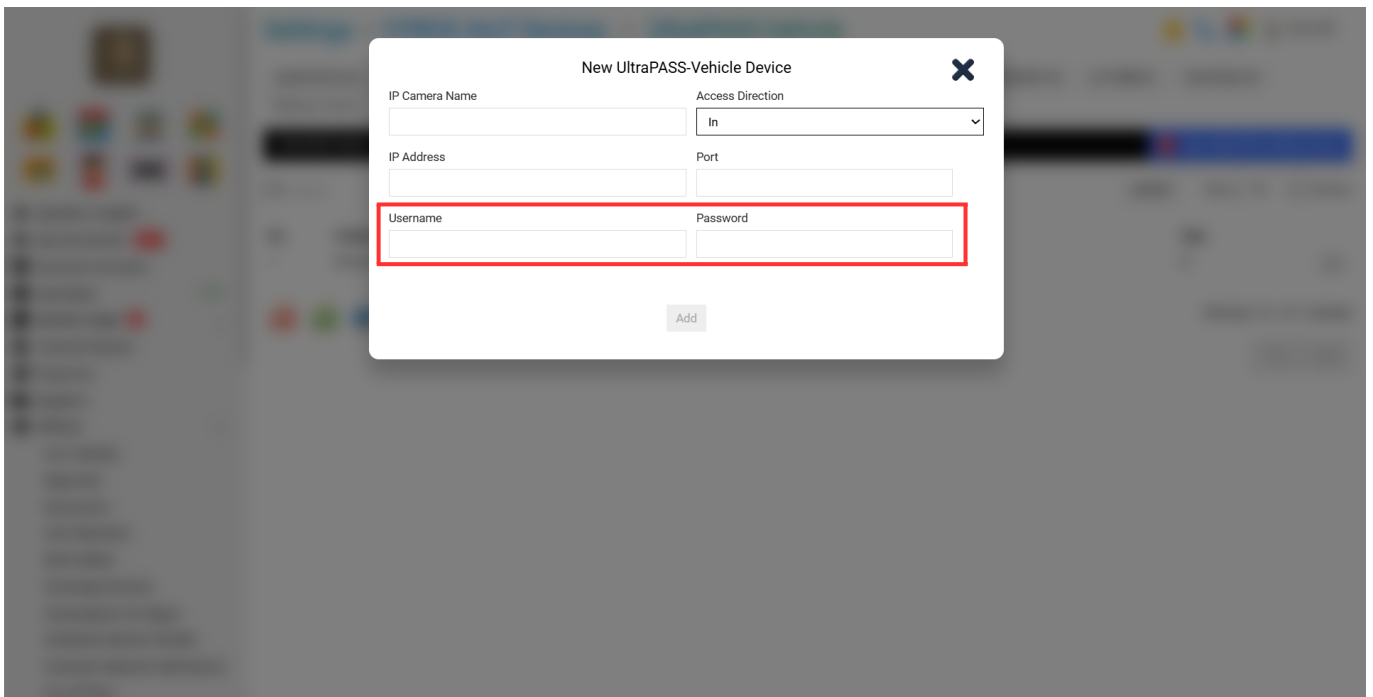


Step 3:

Fill in the Blank **“IP Address & Port”**



Step 4: Fill in the blank **“Username & Password”**.



After done keying in all information, Click **“Add”**

2. CONFIGURATION INSTRUCTIONS FOR PROPERTIES

This guide shows you step-by-step how to set up the Properties Unit part of the VYROX VIP Smart Integrated Property Management System, which was created by VYROX INTERNATIONAL SDN BHD. Property managers, building officials, and facility workers can create and manage each unit, ensuring that the information about every unit is always accurate. Then, each unit can be easily connected to access control modules like UltraPass Face for managing vehicle entry, UltraPass Lift for controlling door entry, SuperPass-Door for controlling door entry, and UltraPass Vehicle for controlling lift access. This way, unit records can be directly linked to automated and secure access permissions.

2.1 Configuration Properties

Go to **Properties > Units**

PIC

Details include:

1. The Floor(s) Where This Property Is Situated
2. Default SuperPASS-Door Settings for Main and Sub User Accounts
3. Default SuperPASS-Lift Settings for Main and Sub User Accounts
4. Default UltraPASS-Face Settings for Main and Sub User Accounts
5. Default UltraPASS-Vehicle Settings for Main and Sub User Accounts
6. Visitor Type(s) Available for Selection During New Visitor Registration For This Property

Step 1

From:
<https://www.vyrox.com/wiki/> - **VYROX Wiki**

Permanent link:
https://www.vyrox.com/wiki/doku.php?id=access_control_system&rev=1756090184

Last update: **2025/08/25 02:49**

