

ACCESS CONTROL SYSTEM

Introduction

This guide provides a comprehensive procedure for optimising and enhancing security operations by utilising the VYROX VIP Smart Access Control System, developed by VYROX INTERNATIONAL SDN BHD. The VYROX VIP platform is a powerful and integrated suite of tools specifically designed for property managers, building administrators, and facility operators to effectively manage and monitor access to buildings, common facilities, and individual units. With features such as smart card access, biometric verification, QR code entry, and visitor management, the system ensures a secure, seamless, and user-friendly experience while strengthening overall safety and accountability within any property.

1. ACCESS CONTROL SYSTEM

An access control system is a security solution designed to regulate and monitor entry to physical or digital spaces, ensuring that only authorized individuals can gain access. By integrating technologies such as key cards, biometrics, QR codes, and password authentication, access control systems enhance safety, streamline operations, and protect valuable assets. These systems are widely used in residential buildings, commercial properties, and industrial facilities to manage the movement of people and vehicles effectively. Beyond security, access control systems also provide administrators with valuable data for monitoring activities, improving efficiency, and enforcing policies, making them an essential component of modern property and organizational management.

1.1 SuperPass-Door

Go to **Setting > AIoT Devices > SuperPASS-Door**

The screenshot shows the 'Settings > VYROX AIoT Devices > SuperPASS-Door' interface. The left sidebar contains various system settings. The top navigation bar includes buttons for different device types: SuperPASS-Door, SuperPASS-Lift, UltraPASS-Face, UltraPASS-Vehicle, SecurityGPT-Stranger, PrivacyCALLER, PowerMONITOR, AUTOSERVA, and PayPerUse QR. Below this, there are buttons for Delivery Lockers and Parking Locks. The main content area features a search bar and a table of SuperPASS-Door devices. A red box highlights the 'New SuperPASS-Door Device' button in the top right corner of the main content area.

No.	Created	Serial No.	Label
1	07-May-2025	253257130	Access Door Demo
2	14-Aug-2025	253228206	Testing Board

Details include:

1. SuperPass-Door Controller Name
2. Number of Doors Supported
3. Label Name in Channel
4. Cloud Server
5. Cloud Server API Key
6. SuperPASS-Door Controller Serial Number

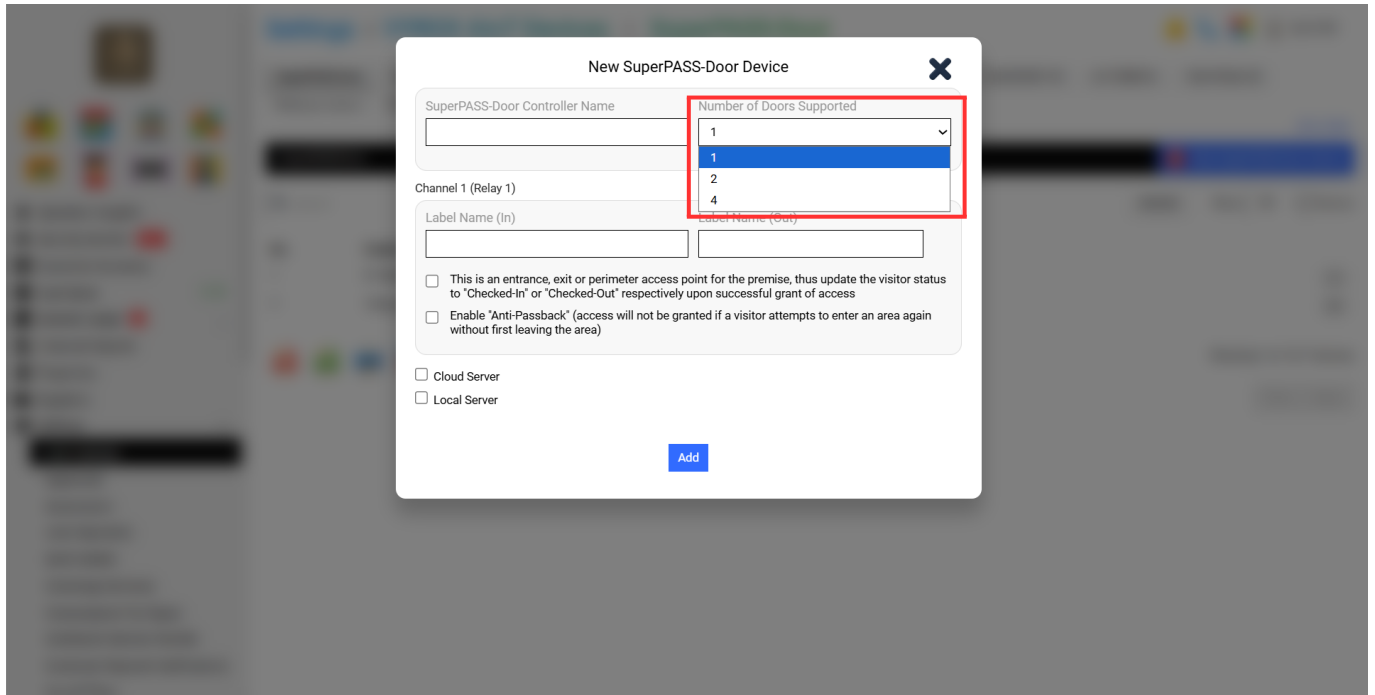
Step 1:

Fill in the blank. **“SuperPass-Door Controller Name”**

The screenshot shows the 'New SuperPASS-Door Device' modal form. The 'SuperPASS-Door Controller Name' field is highlighted with a red box. The form includes a dropdown for 'Number of Doors Supported' (set to 1), two input fields for 'Label Name (In)' and 'Label Name (Out)', and several checkboxes: 'This is an entrance, exit or perimeter access point for the premise, thus update the visitor status to "Checked-In" or "Checked-Out" respectively upon successful grant of access', 'Enable "Anti-Passback" (access will not be granted if a visitor attempts to enter an area again without first leaving the area)', 'Cloud Server', and 'Local Server'. An 'Add' button is located at the bottom of the form.

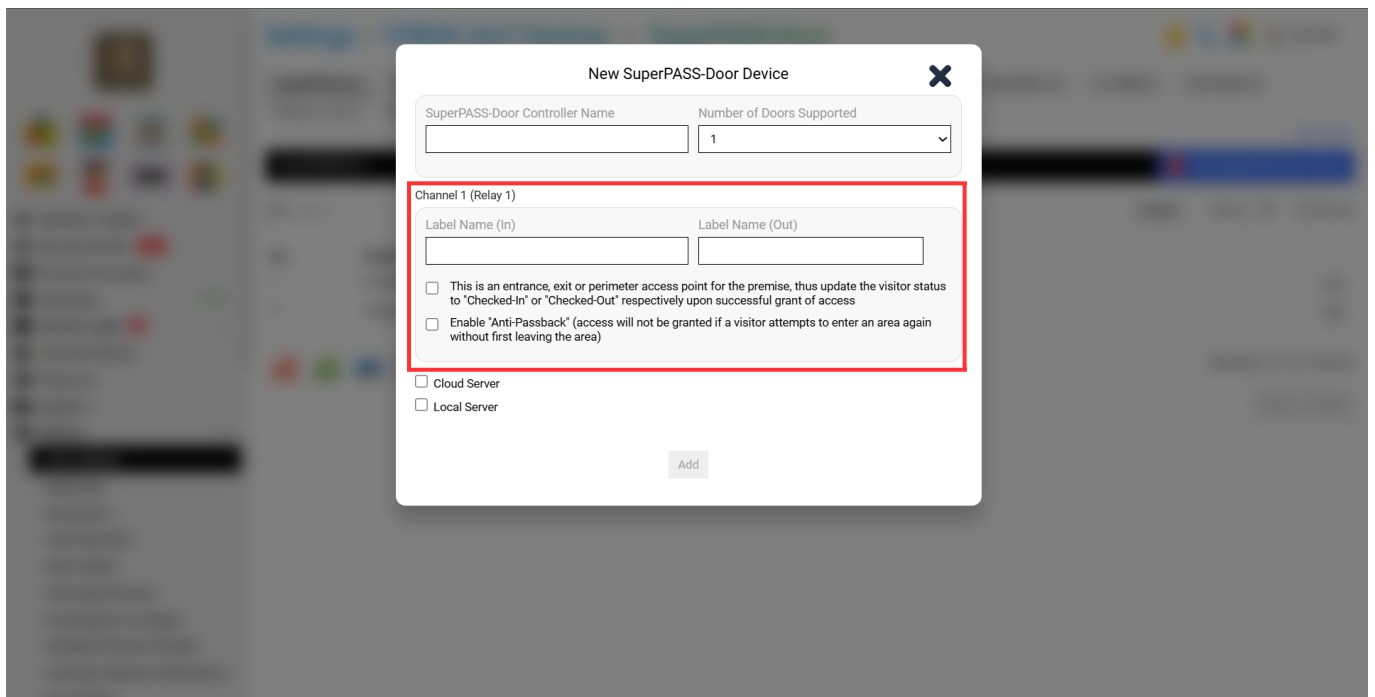
Step 2:

Select **“Number of Doors Supported”**

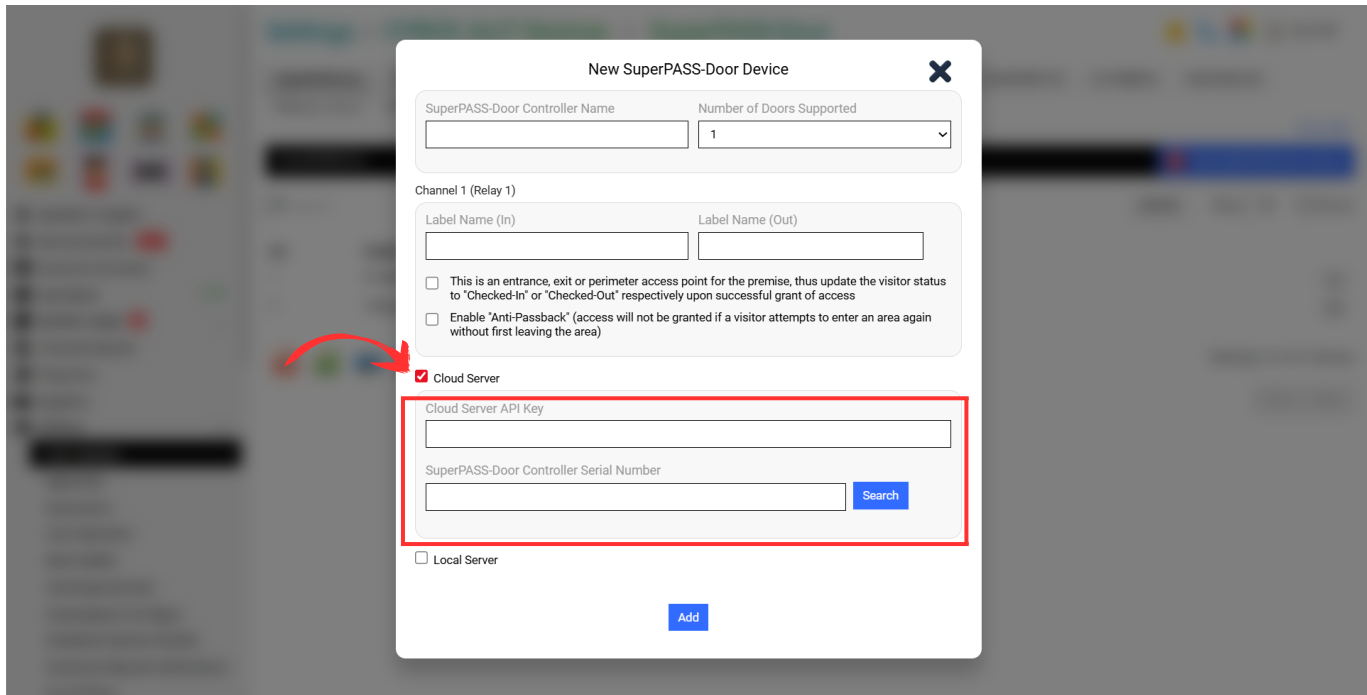


Step 3:

Fill in the Blank **“Label Name in Channel”**



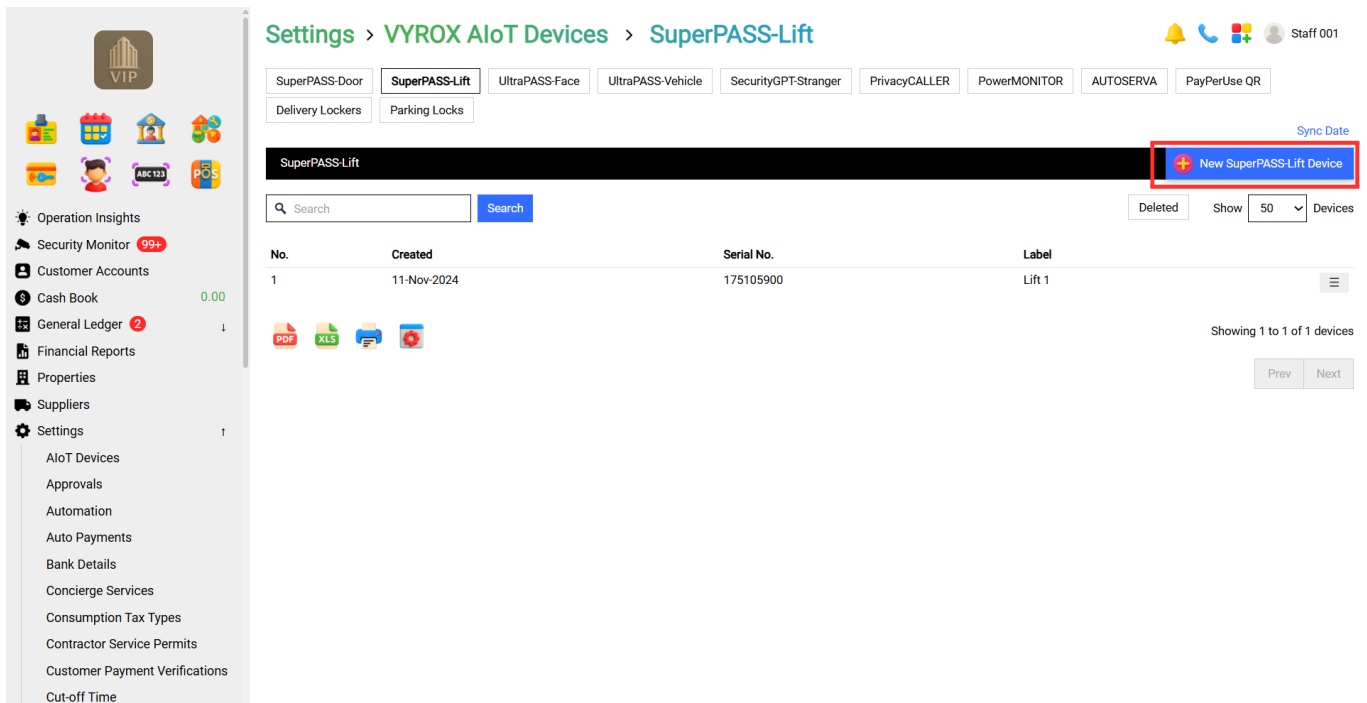
Step 4: Tick Cloud Server and Fill in the blank **“Cloud Server API Key & SuperPASS-Door Controller Serial Number”**.



After done keying in all information, Click "Add"

1.2 SuperPass-Lift

Go to **Setting > AIoT Devices > SuperPASS-Lift**



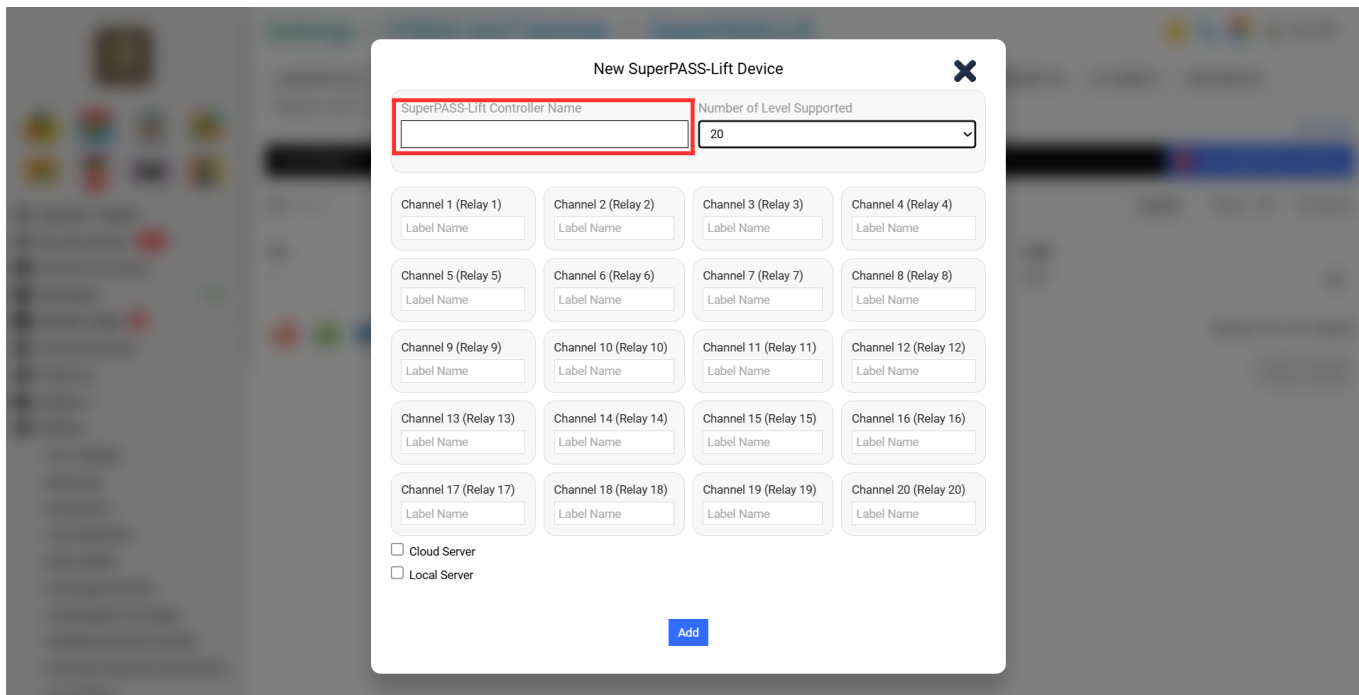
Details include:

1. SuperPass-Lift Controller Name
2. Number of Level Supported
3. Label Name in Channel
4. Cloud Server

- 5. Cloud Server API Key
- 6. SuperPASS-Lift Controller Serial Number

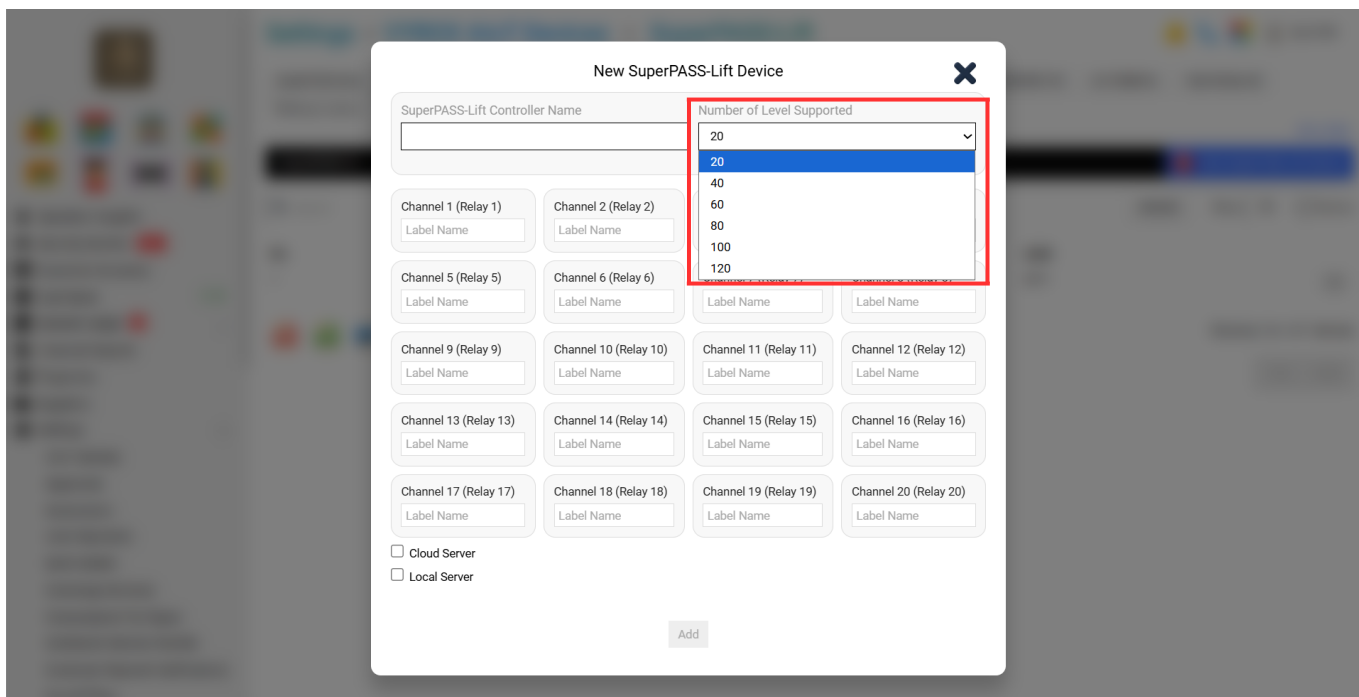
Step 1:

Fill in blank **“SuperPass-Lift Controller Name”**



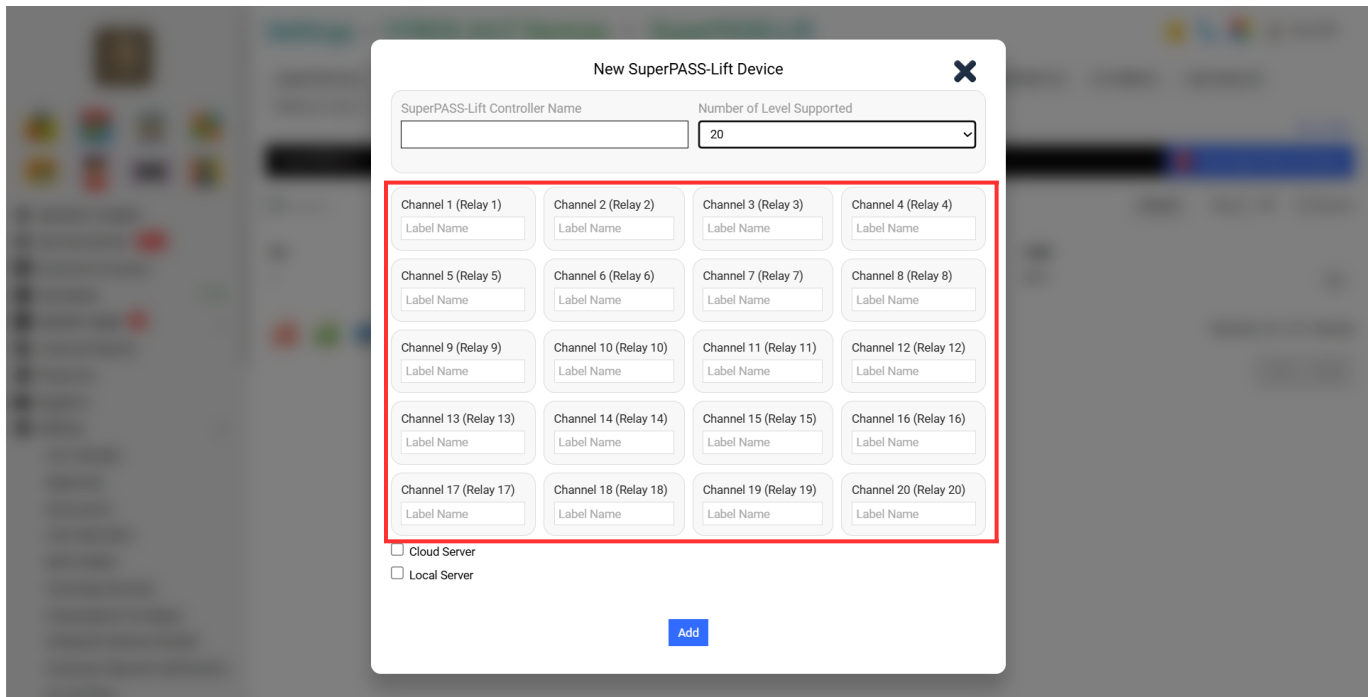
Step 2:

Select **“Number of Level Supported”**

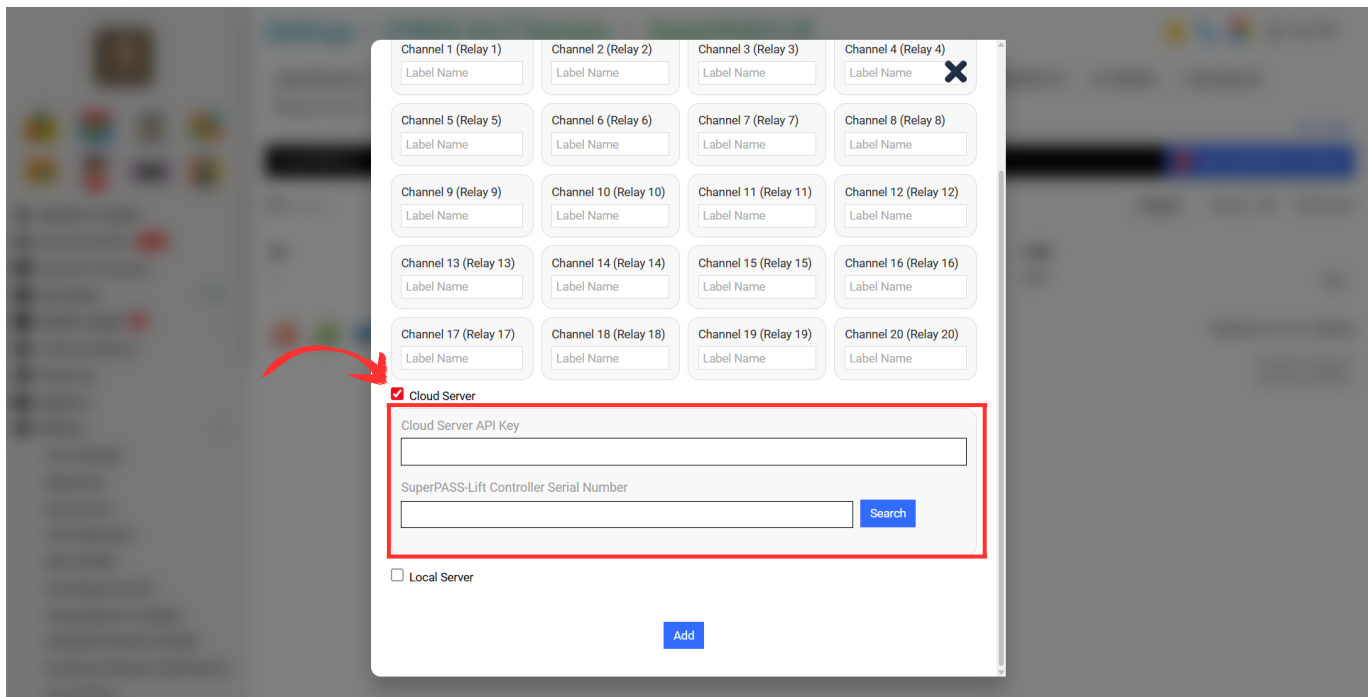


Step 3:

Fill in the Blank “Label Name in Channel”



Step 4: Tick Cloud Server and Fill in the blank “Cloud Server API Key & SuperPASS-Door Controller Serial Number”.



After done keying in all information, Click “Add”

1.3 SuperPass Face

Go to **Setting > AIoT Devices > SuperPASS-Face**

Settings > VYROX AIoT Devices > UltraPASS-Face

SuperPASS-Door SuperPASS-Lift **UltraPASS-Face** UltraPASS-Vehicle SecurityGPT-Stranger PrivacyCALLER PowerMONITOR AUTOSERVA PayPerUse QR

Delivery Lockers Parking Locks

UltraPASS-Face **New UltraPASS-Face Device**

Search Deleted Show 50 Devices

No.	Created	Label	IP	Username	Password
1	18-Nov-2024	Inside Face	vyroxaIoT.ddns.net:108	admin	*****
2	20-May-2023	Outside Face	vyroxaIoT.ddns.net:243	admin	*****

Showing 1 to 2 of 2 devices

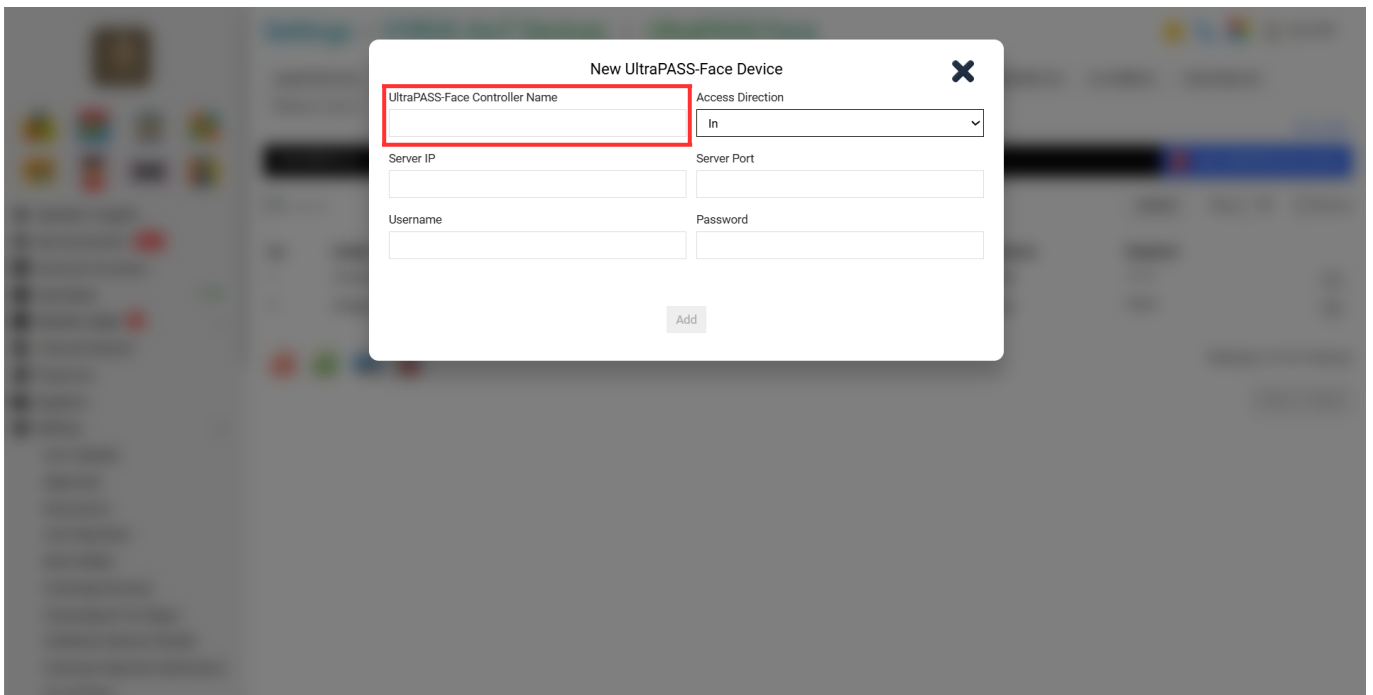
Prev Next

Details include:

1. SuperPass-Face Controller Name
2. Access Direction
3. Server IP
4. Server Port
5. Username & Password

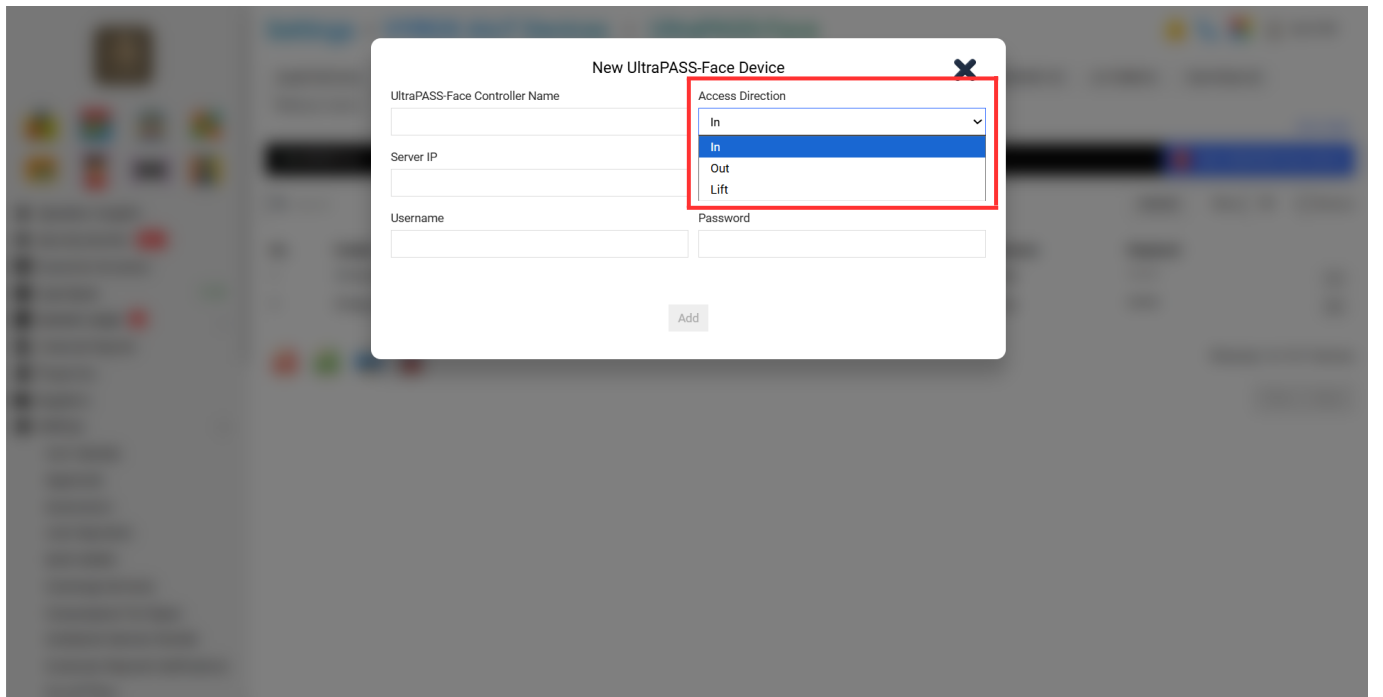
Step 1:

Fill in blank **“SuperPass-Face Controller Name”**



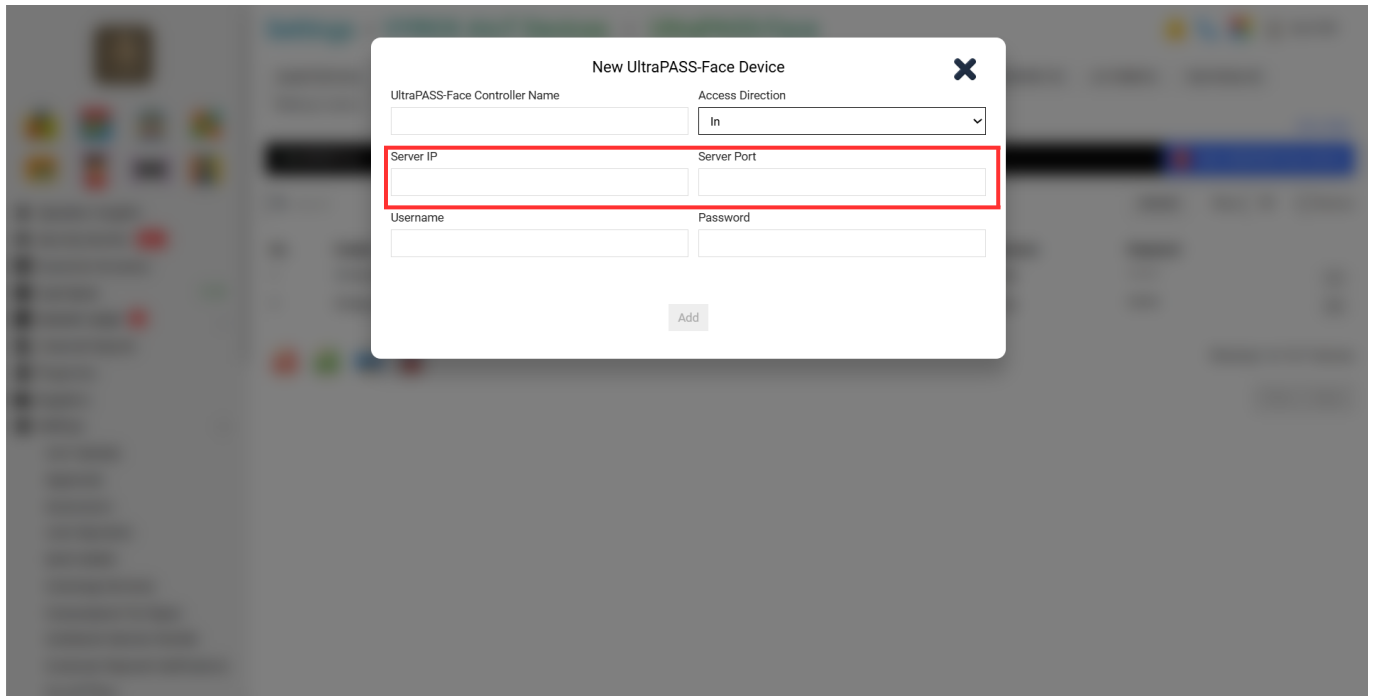
Step 2:

Select **“Access Direction”**

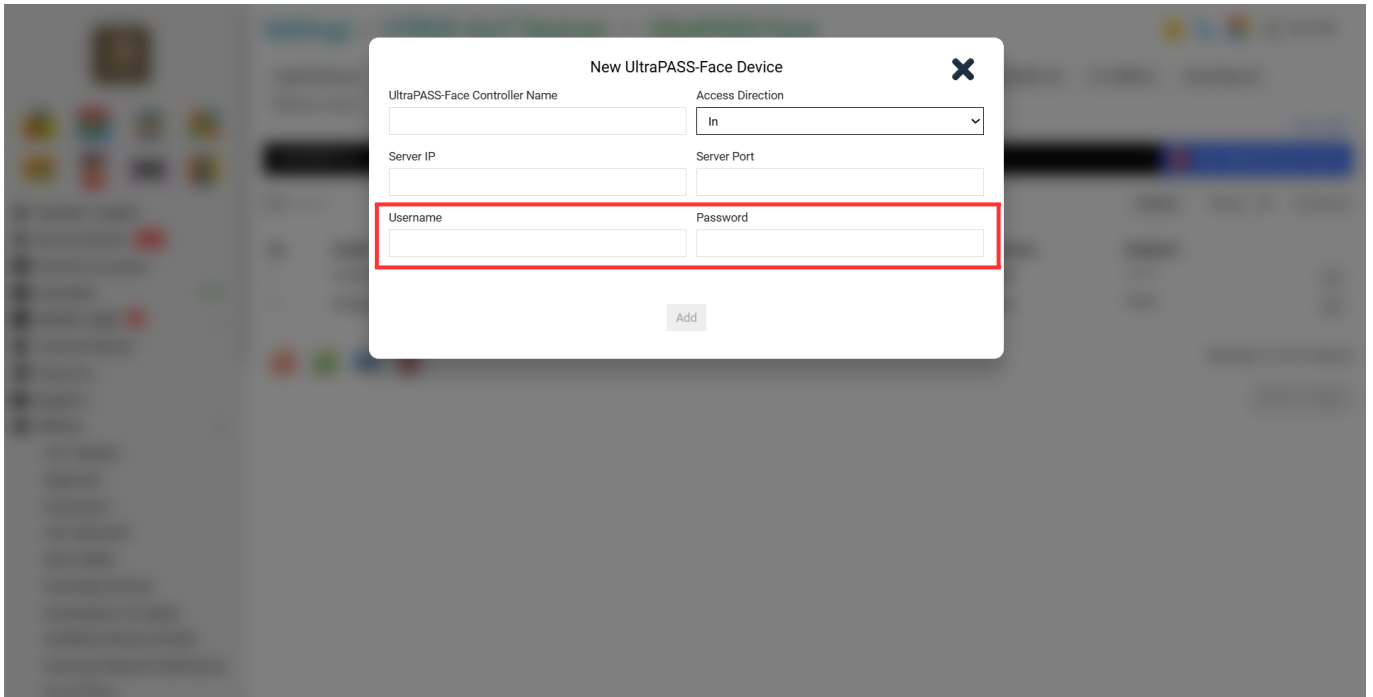


Step 3:

Fill in the Blank **“Server IP & Server Port”**



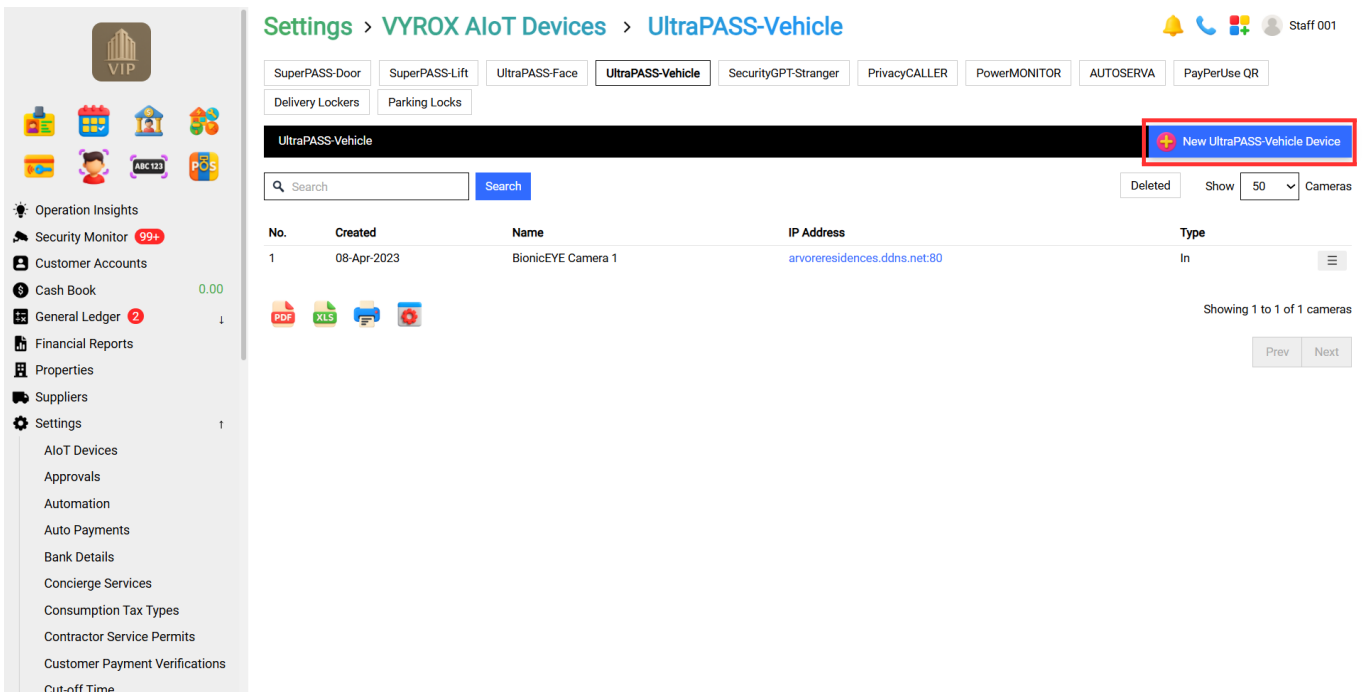
Step 4: Fill in the blank **“Username & Password”**.



After done keying in all information, Click "Add"

1.4 SuperPass Vehicle

Go to **Setting > AIoT Devices > SuperPASS Vehicle**



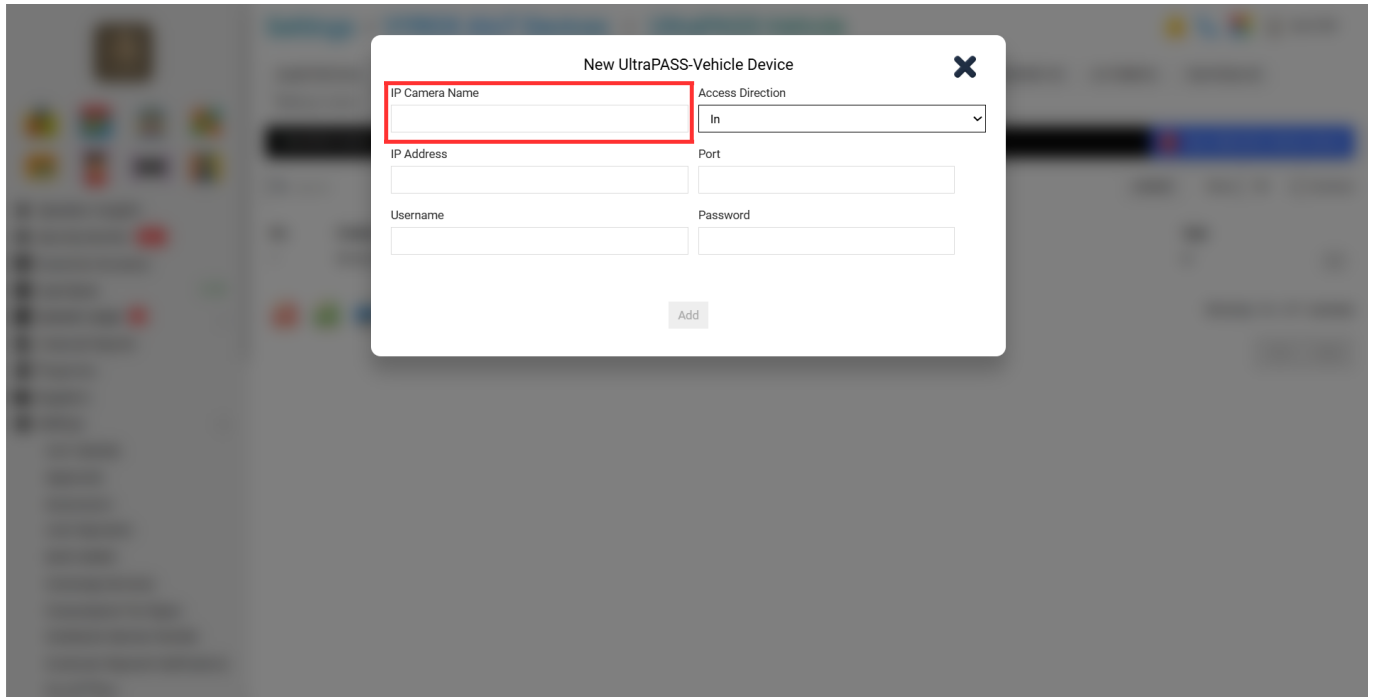
Details include:

1. IP Camera Name
2. Access Direction
3. IP Address & Port
4. Server Port

5. Username & Password

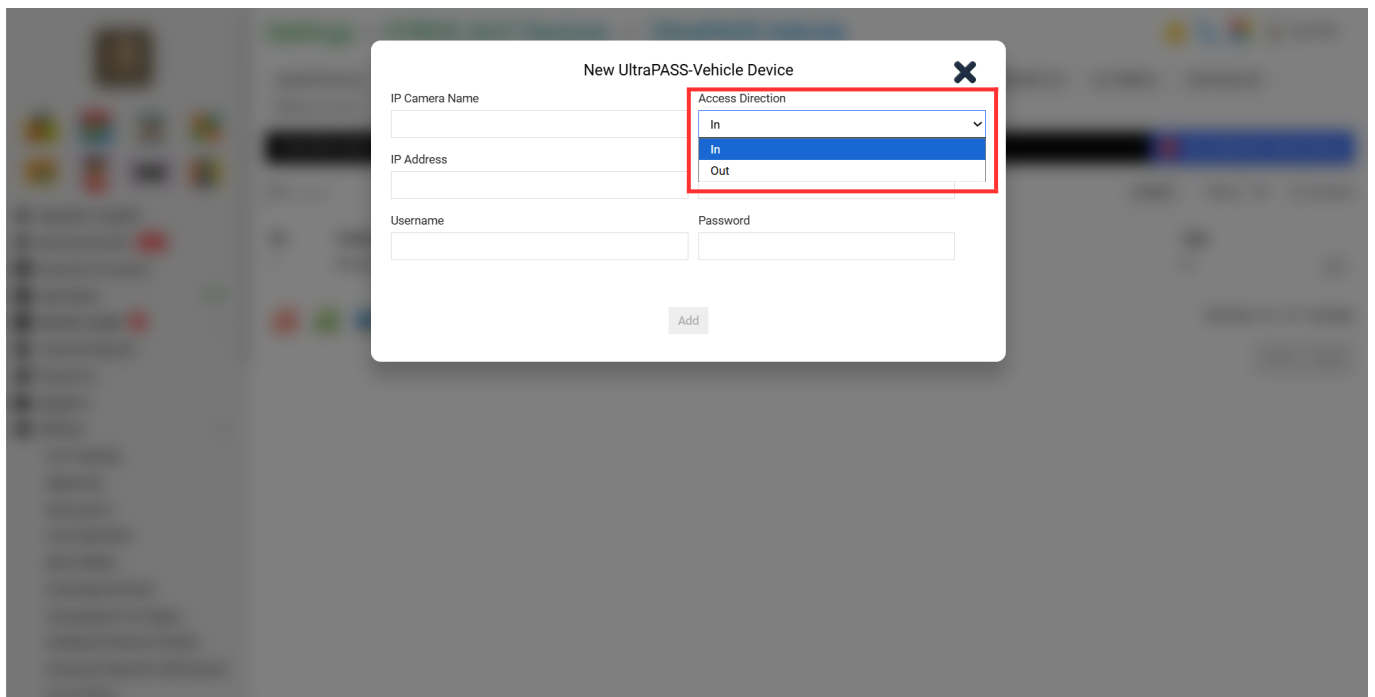
Step 1:

Fill in blank **“IP Camera Name”**



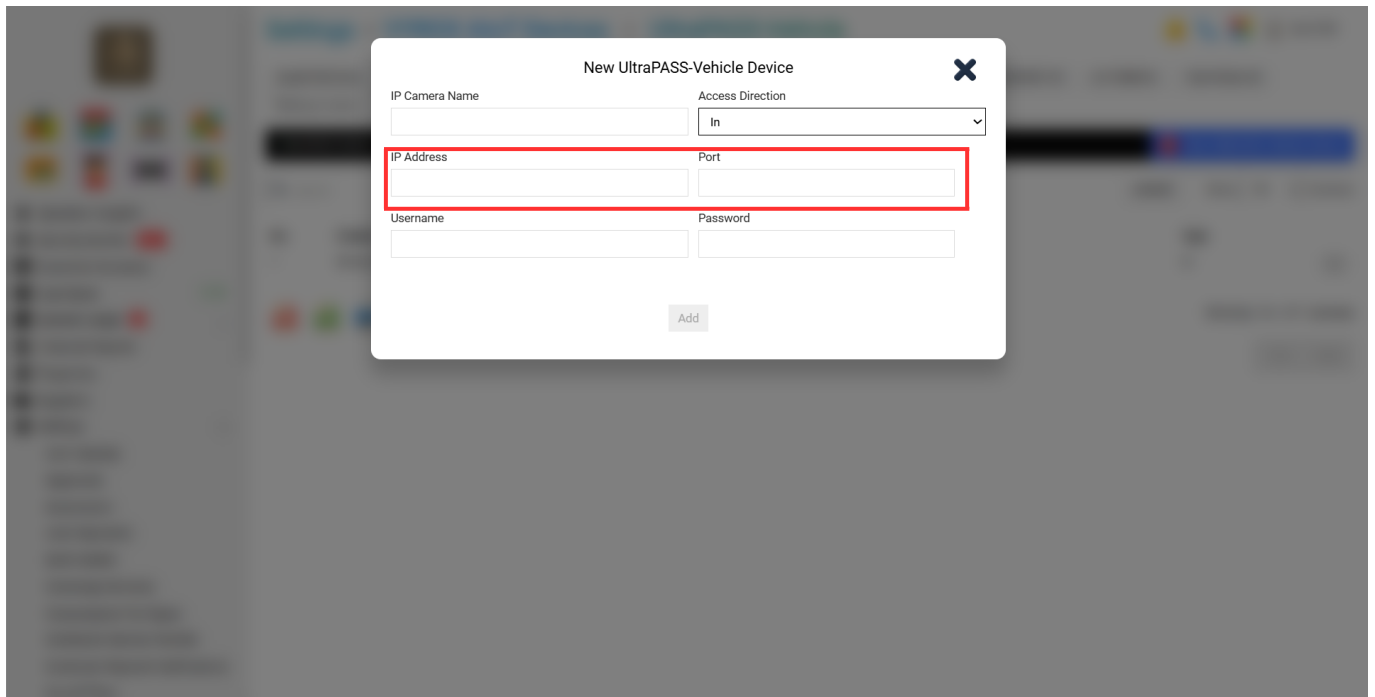
Step 2:

Select **“Access Direction”**

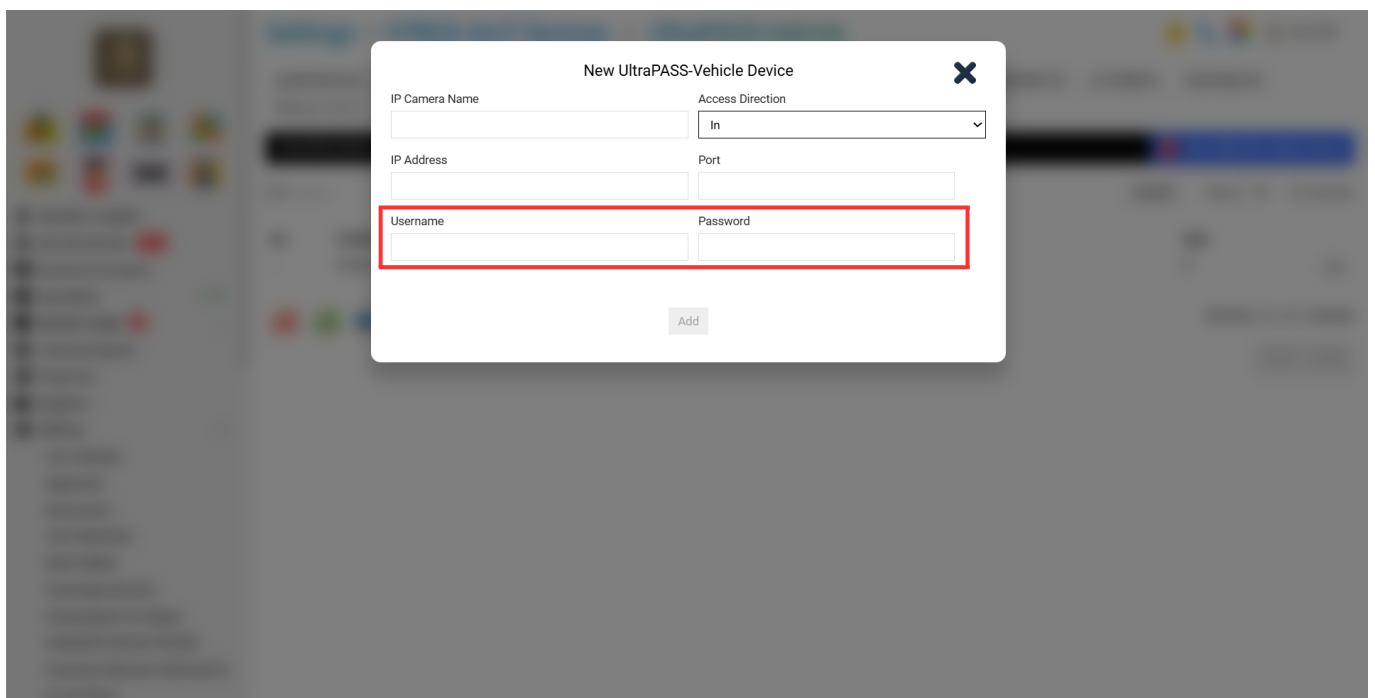


Step 3:

Fill in the Blank **“IP Address & Port”**



Step 4: Fill in the blank **“Username & Password”**.



After done keying in all information, Click **“Add”**

From:
<https://www.vyrox.com/wiki/> - **VYROX Wiki**

Permanent link:
https://www.vyrox.com/wiki/doku.php?id=access_control_system&rev=1755849139

Last update: **2025/08/22 07:52**

